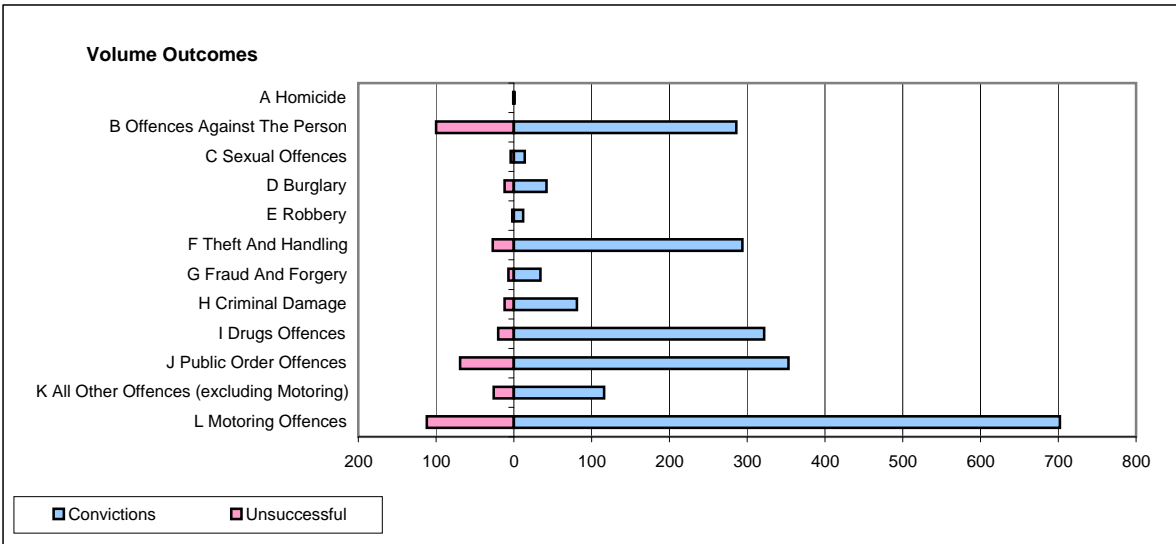
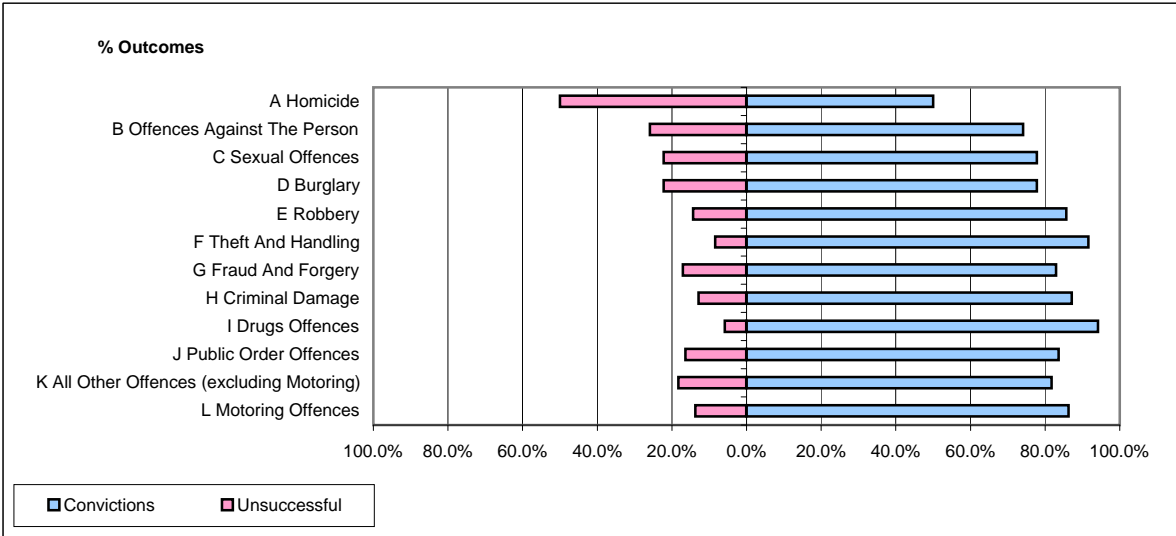


CPS OUTCOMES BY PRINCIPAL OFFENCE CATEGORY

April 2009

P24-Merseyside



	Convictions		Unsuccessful	
	Number of Defendants	%	Number of Defendants	%
A Homicide	1	50.0%	1	50.0%
B Offences Against The Person	286	74.1%	100	25.9%
C Sexual Offences	14	77.8%	4	22.2%
D Burglary	42	77.8%	12	22.2%
E Robbery	12	85.7%	2	14.3%
F Theft And Handling	294	91.6%	27	8.4%
G Fraud And Forgery	34	82.9%	7	17.1%
H Criminal Damage	81	87.1%	12	12.9%
I Drugs Offences	322	94.2%	20	5.8%
J Public Order Offences	353	83.6%	69	16.4%
K All Other Offences (excluding Motoring)	116	81.7%	26	18.3%
L Motoring Offences	702	86.2%	112	13.8%
Admin Finalisations	0	0.0%	19	100.0%
TOTAL	2,257	84.6%	411	15.4%