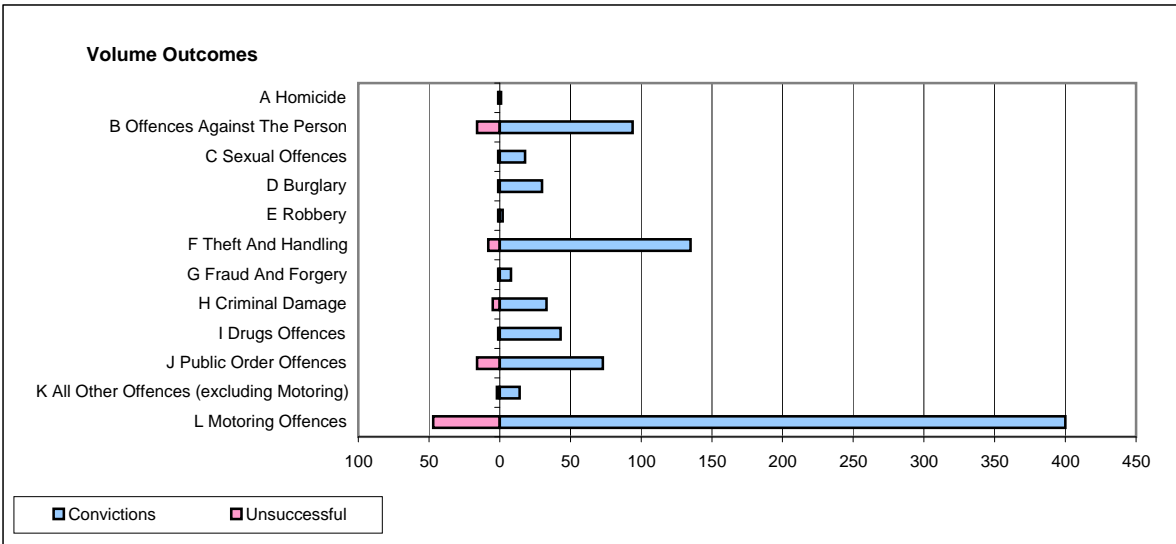
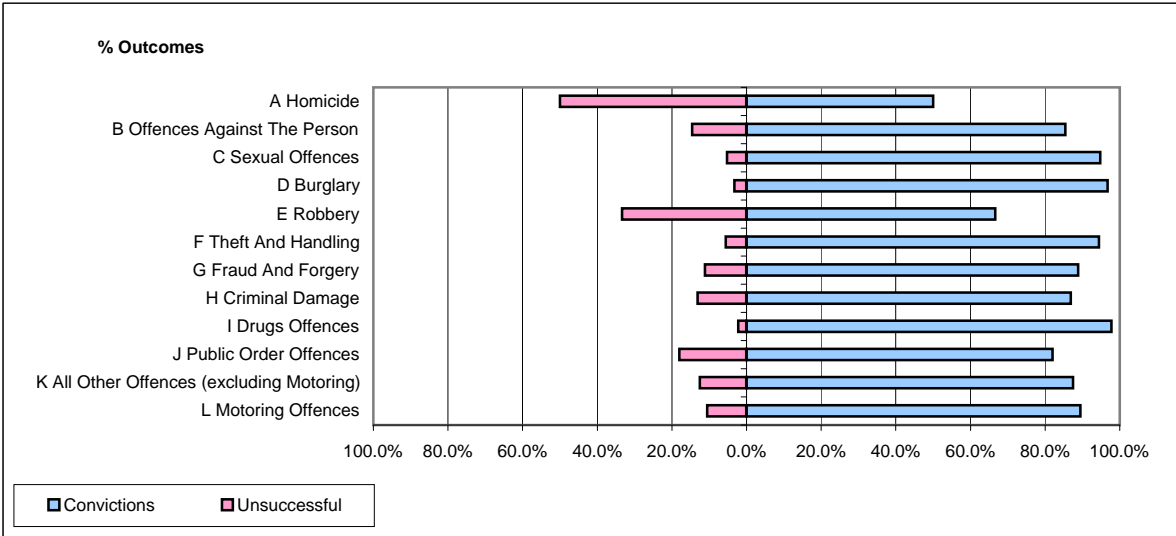


**CPS OUTCOMES BY PRINCIPAL OFFENCE CATEGORY**

**April 2009**

**P23-Lincolnshire**



	Convictions		Unsuccessful	
	Number of Defendants	%	Number of Defendants	%
<b>A Homicide</b>	<b>1</b>	<b>50.0%</b>	<b>1</b>	<b>50.0%</b>
<b>B Offences Against The Person</b>	<b>94</b>	<b>85.5%</b>	<b>16</b>	<b>14.5%</b>
<b>C Sexual Offences</b>	<b>18</b>	<b>94.7%</b>	<b>1</b>	<b>5.3%</b>
<b>D Burglary</b>	<b>30</b>	<b>96.8%</b>	<b>1</b>	<b>3.2%</b>
<b>E Robbery</b>	<b>2</b>	<b>66.7%</b>	<b>1</b>	<b>33.3%</b>
<b>F Theft And Handling</b>	<b>135</b>	<b>94.4%</b>	<b>8</b>	<b>5.6%</b>
<b>G Fraud And Forgery</b>	<b>8</b>	<b>88.9%</b>	<b>1</b>	<b>11.1%</b>
<b>H Criminal Damage</b>	<b>33</b>	<b>86.8%</b>	<b>5</b>	<b>13.2%</b>
<b>I Drugs Offences</b>	<b>43</b>	<b>97.7%</b>	<b>1</b>	<b>2.3%</b>
<b>J Public Order Offences</b>	<b>73</b>	<b>82.0%</b>	<b>16</b>	<b>18.0%</b>
<b>K All Other Offences (excluding Motoring)</b>	<b>14</b>	<b>87.5%</b>	<b>2</b>	<b>12.5%</b>
<b>L Motoring Offences</b>	<b>400</b>	<b>89.5%</b>	<b>47</b>	<b>10.5%</b>
<b>Admin Finalisations</b>	<b>0</b>	<b>0.0%</b>	<b>9</b>	<b>100.0%</b>
<b>TOTAL</b>	<b>851</b>	<b>88.6%</b>	<b>109</b>	<b>11.4%</b>