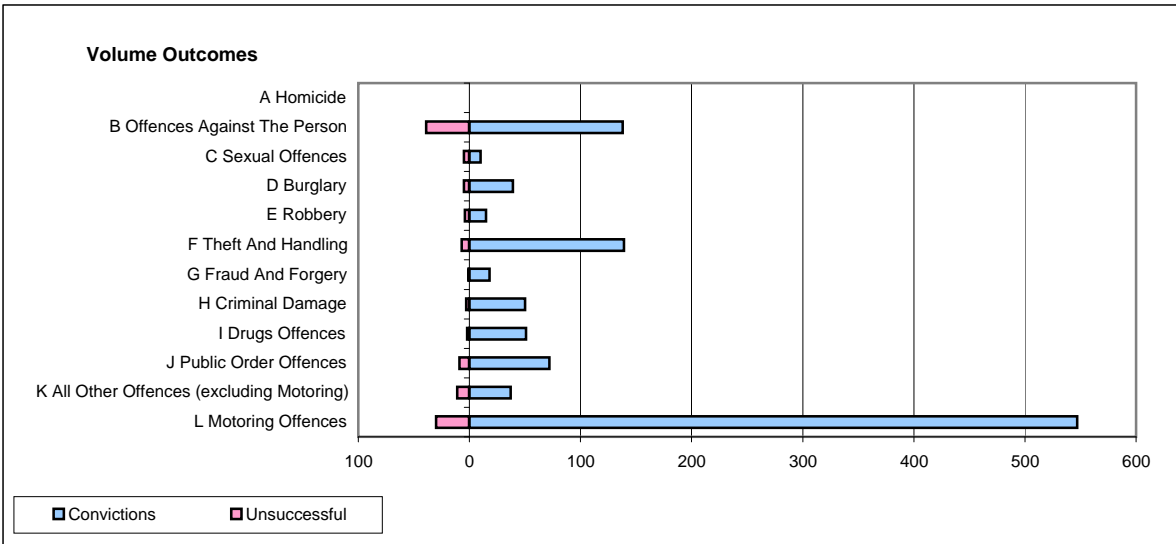
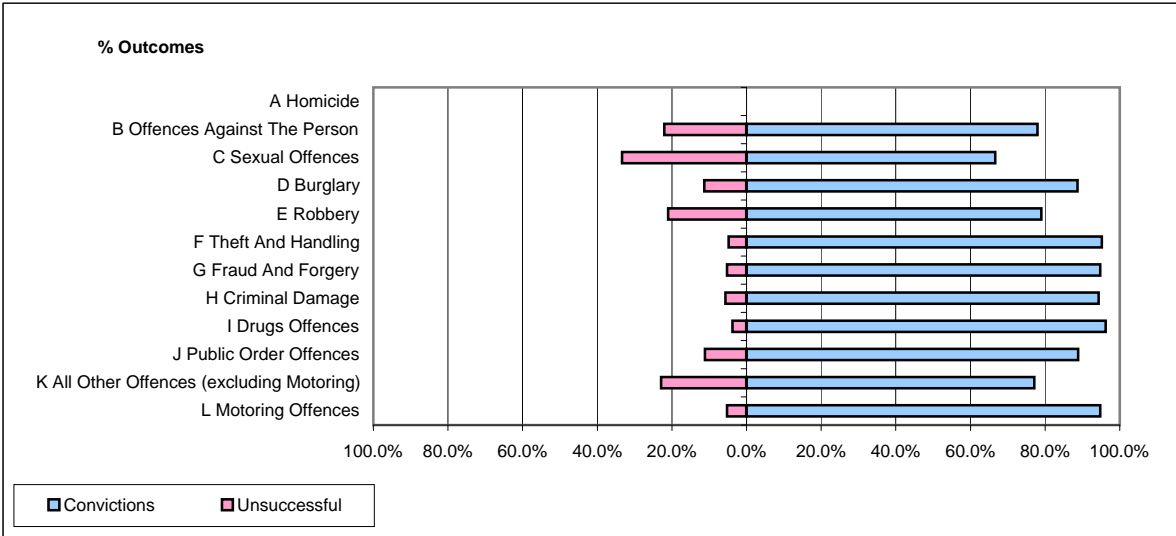


CPS OUTCOMES BY PRINCIPAL OFFENCE CATEGORY

April 2009

P22-Leicestershire



	Convictions		Unsuccessful	
	Number of Defendants	%	Number of Defendants	%
A Homicide	0	0	0	0
B Offences Against The Person	138	78.0%	39	22.0%
C Sexual Offences	10	66.7%	5	33.3%
D Burglary	39	88.6%	5	11.4%
E Robbery	15	78.9%	4	21.1%
F Theft And Handling	139	95.2%	7	4.8%
G Fraud And Forgery	18	94.7%	1	5.3%
H Criminal Damage	50	94.3%	3	5.7%
I Drugs Offences	51	96.2%	2	3.8%
J Public Order Offences	72	88.9%	9	11.1%
K All Other Offences (excluding Motoring)	37	77.1%	11	22.9%
L Motoring Offences	547	94.8%	30	5.2%
Admin Finalisations	0	0.0%	20	100.0%
TOTAL	1,116	89.1%	136	10.9%