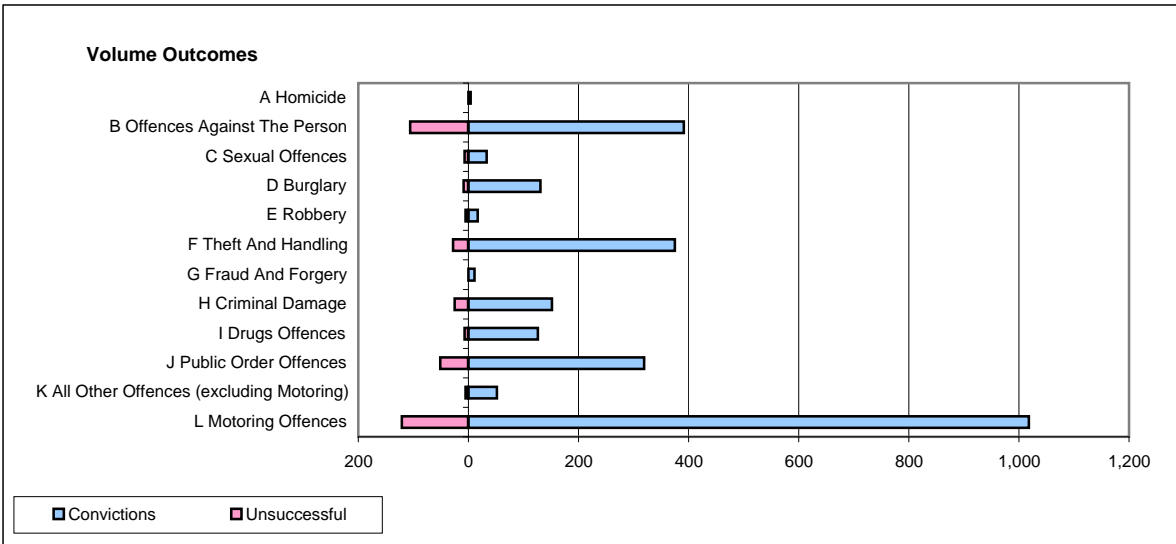
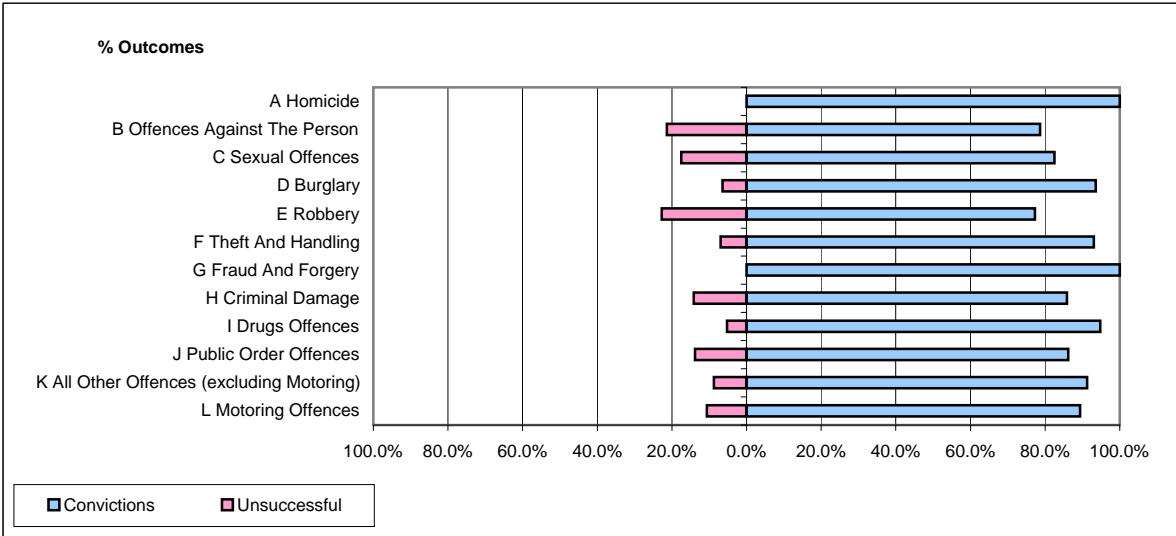


**CPS OUTCOMES BY PRINCIPAL OFFENCE CATEGORY**

**April 2009**

**P21-Lancashire**



	Convictions		Unsuccessful	
	Number of Defendants	%	Number of Defendants	%
<b>A Homicide</b>	<b>4</b>	<b>100.0%</b>	<b>0</b>	<b>0.0%</b>
<b>B Offences Against The Person</b>	<b>391</b>	<b>78.7%</b>	<b>106</b>	<b>21.3%</b>
<b>C Sexual Offences</b>	<b>33</b>	<b>82.5%</b>	<b>7</b>	<b>17.5%</b>
<b>D Burglary</b>	<b>131</b>	<b>93.6%</b>	<b>9</b>	<b>6.4%</b>
<b>E Robbery</b>	<b>17</b>	<b>77.3%</b>	<b>5</b>	<b>22.7%</b>
<b>F Theft And Handling</b>	<b>375</b>	<b>93.1%</b>	<b>28</b>	<b>6.9%</b>
<b>G Fraud And Forgery</b>	<b>11</b>	<b>100.0%</b>	<b>0</b>	<b>0.0%</b>
<b>H Criminal Damage</b>	<b>152</b>	<b>85.9%</b>	<b>25</b>	<b>14.1%</b>
<b>I Drugs Offences</b>	<b>126</b>	<b>94.7%</b>	<b>7</b>	<b>5.3%</b>
<b>J Public Order Offences</b>	<b>319</b>	<b>86.2%</b>	<b>51</b>	<b>13.8%</b>
<b>K All Other Offences (excluding Motoring)</b>	<b>52</b>	<b>91.2%</b>	<b>5</b>	<b>8.8%</b>
<b>L Motoring Offences</b>	<b>1,018</b>	<b>89.4%</b>	<b>121</b>	<b>10.6%</b>
<b>Admin Finalisations</b>	<b>0</b>	<b>0.0%</b>	<b>21</b>	<b>100.0%</b>
<b>TOTAL</b>	<b>2,629</b>	<b>87.2%</b>	<b>385</b>	<b>12.8%</b>