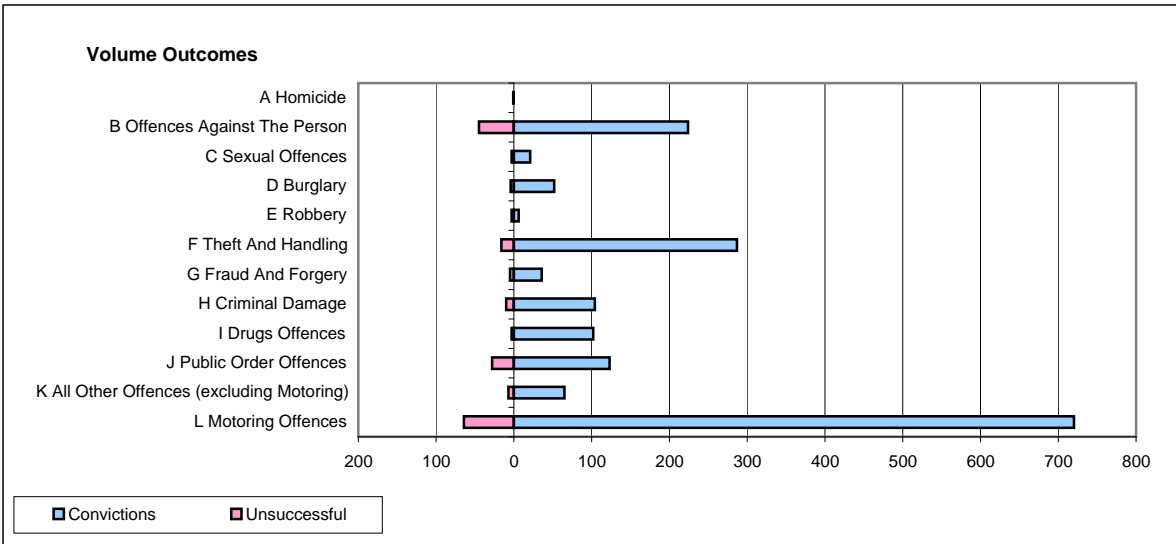
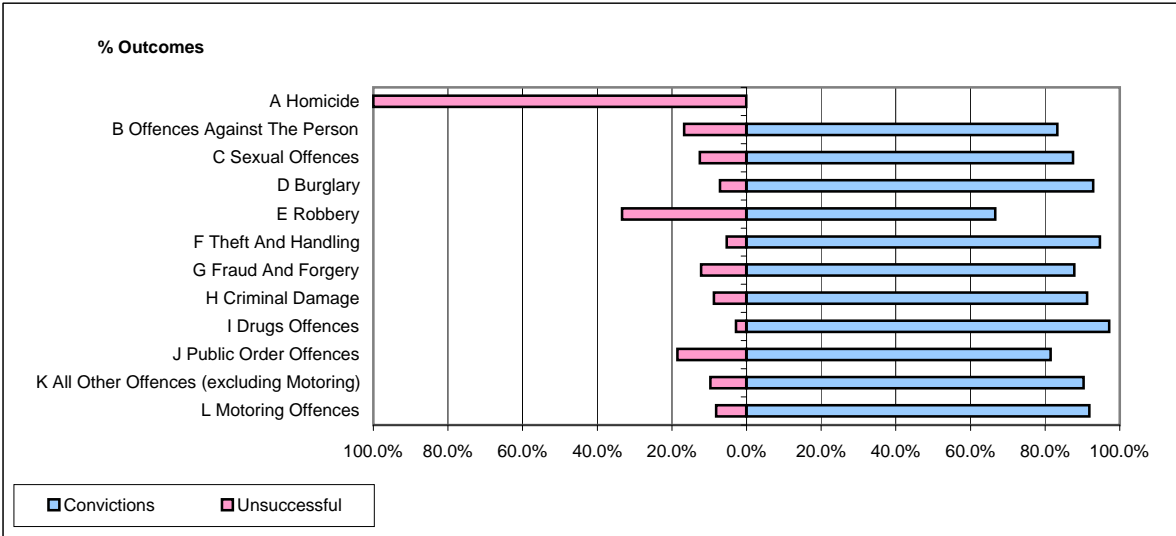


CPS OUTCOMES BY PRINCIPAL OFFENCE CATEGORY

April 2009

P20-Kent



	Convictions		Unsuccessful	
	Number of Defendants	%	Number of Defendants	%
A Homicide	0	0.0%	1	100.0%
B Offences Against The Person	224	83.3%	45	16.7%
C Sexual Offences	21	87.5%	3	12.5%
D Burglary	52	92.9%	4	7.1%
E Robbery	6	66.7%	3	33.3%
F Theft And Handling	287	94.7%	16	5.3%
G Fraud And Forgery	36	87.8%	5	12.2%
H Criminal Damage	104	91.2%	10	8.8%
I Drugs Offences	102	97.1%	3	2.9%
J Public Order Offences	123	81.5%	28	18.5%
K All Other Offences (excluding Motoring)	65	90.3%	7	9.7%
L Motoring Offences	720	91.8%	64	8.2%
Admin Finalisations	0	0.0%	17	100.0%
TOTAL	1,740	89.4%	206	10.6%