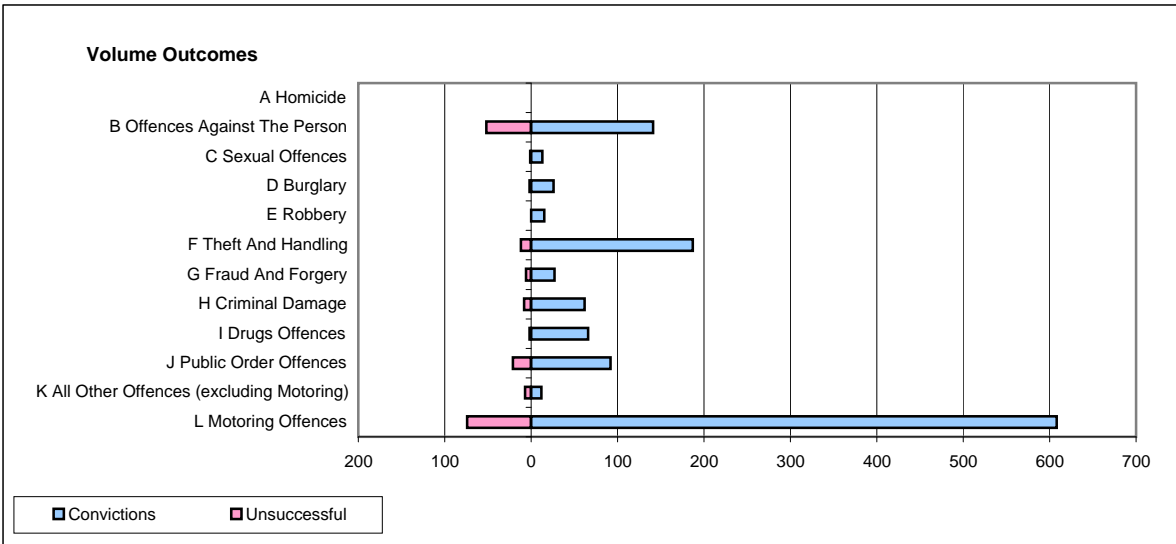
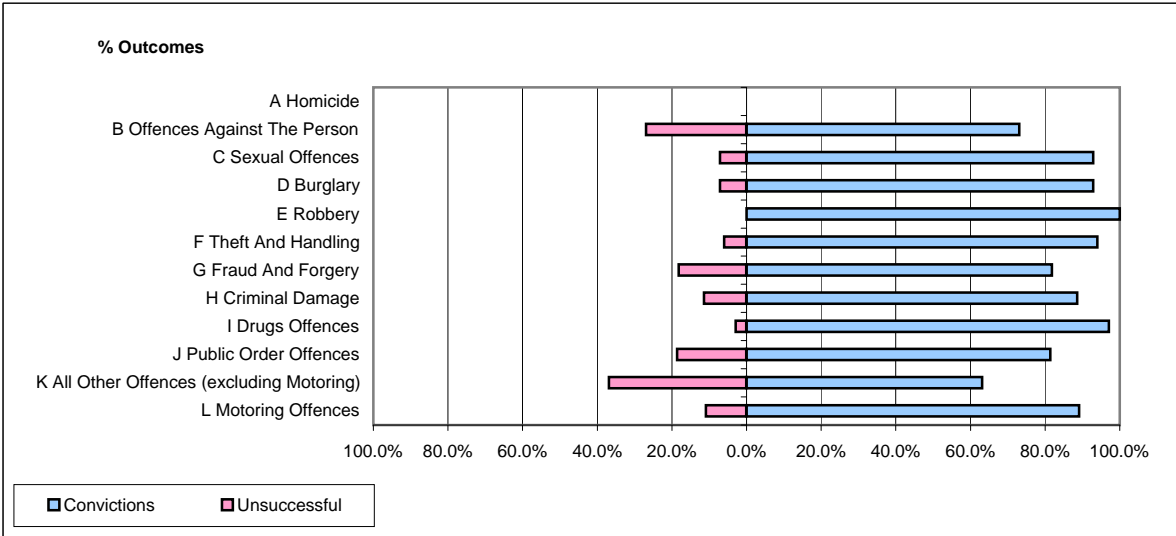


**CPS OUTCOMES BY PRINCIPAL OFFENCE CATEGORY**

**April 2009**

**P18-Hertfordshire**



	Convictions		Unsuccessful	
	Number of Defendants	%	Number of Defendants	%
<b>A Homicide</b>	<b>0</b>	<b>0</b>	<b>0</b>	<b>0</b>
<b>B Offences Against The Person</b>	<b>141</b>	<b>73.1%</b>	<b>52</b>	<b>26.9%</b>
<b>C Sexual Offences</b>	<b>13</b>	<b>92.9%</b>	<b>1</b>	<b>7.1%</b>
<b>D Burglary</b>	<b>26</b>	<b>92.9%</b>	<b>2</b>	<b>7.1%</b>
<b>E Robbery</b>	<b>15</b>	<b>100.0%</b>	<b>0</b>	<b>0.0%</b>
<b>F Theft And Handling</b>	<b>187</b>	<b>94.0%</b>	<b>12</b>	<b>6.0%</b>
<b>G Fraud And Forgery</b>	<b>27</b>	<b>81.8%</b>	<b>6</b>	<b>18.2%</b>
<b>H Criminal Damage</b>	<b>62</b>	<b>88.6%</b>	<b>8</b>	<b>11.4%</b>
<b>I Drugs Offences</b>	<b>66</b>	<b>97.1%</b>	<b>2</b>	<b>2.9%</b>
<b>J Public Order Offences</b>	<b>92</b>	<b>81.4%</b>	<b>21</b>	<b>18.6%</b>
<b>K All Other Offences (excluding Motoring)</b>	<b>12</b>	<b>63.2%</b>	<b>7</b>	<b>36.8%</b>
<b>L Motoring Offences</b>	<b>608</b>	<b>89.1%</b>	<b>74</b>	<b>10.9%</b>
<b>Admin Finalisations</b>	<b>0</b>	<b>0.0%</b>	<b>18</b>	<b>100.0%</b>
<b>TOTAL</b>	<b>1,249</b>	<b>86.0%</b>	<b>203</b>	<b>14.0%</b>