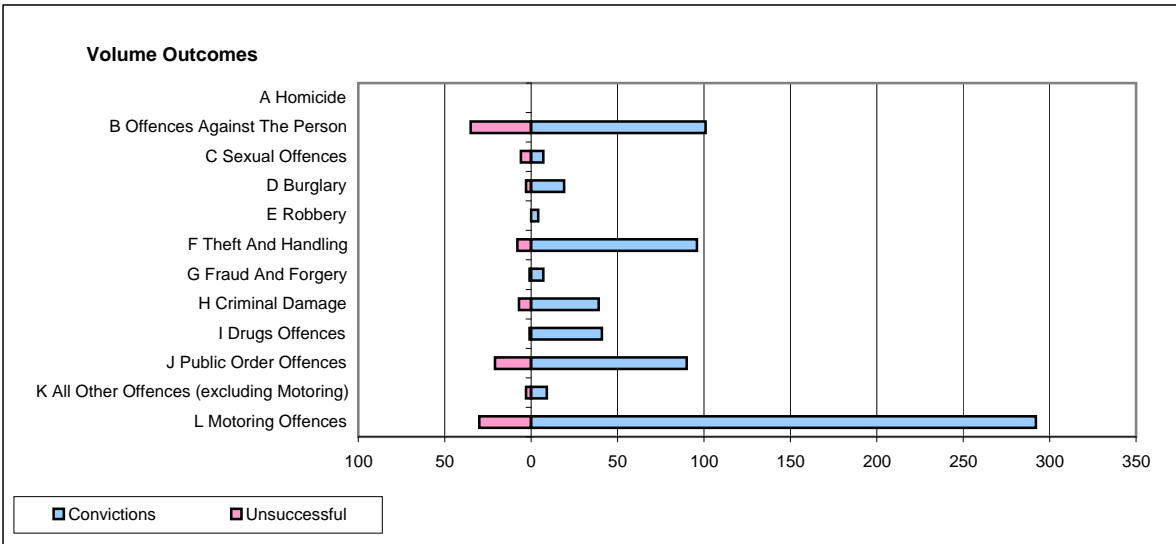
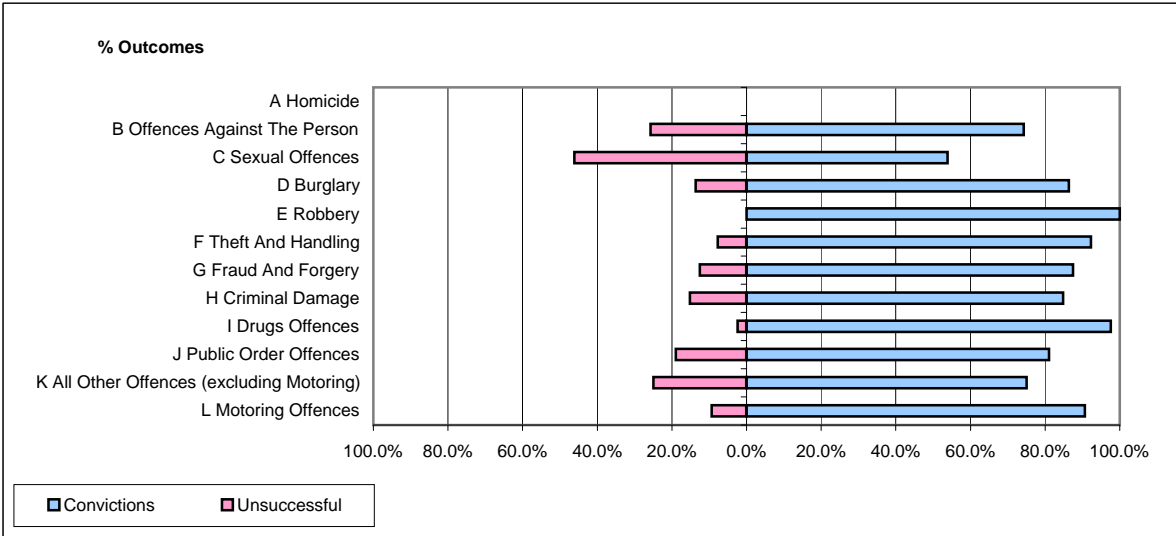


CPS OUTCOMES BY PRINCIPAL OFFENCE CATEGORY

April 2009

P16-Gwent



	Convictions		Unsuccessful	
	Number of Defendants	%	Number of Defendants	%
A Homicide	0	0	0	0
B Offences Against The Person	101	74.3%	35	25.7%
C Sexual Offences	7	53.8%	6	46.2%
D Burglary	19	86.4%	3	13.6%
E Robbery	4	100.0%	0	0.0%
F Theft And Handling	96	92.3%	8	7.7%
G Fraud And Forgery	7	87.5%	1	12.5%
H Criminal Damage	39	84.8%	7	15.2%
I Drugs Offences	41	97.6%	1	2.4%
J Public Order Offences	90	81.1%	21	18.9%
K All Other Offences (excluding Motoring)	9	75.0%	3	25.0%
L Motoring Offences	292	90.7%	30	9.3%
Admin Finalisations	0	0.0%	4	100.0%
TOTAL	705	85.6%	119	14.4%