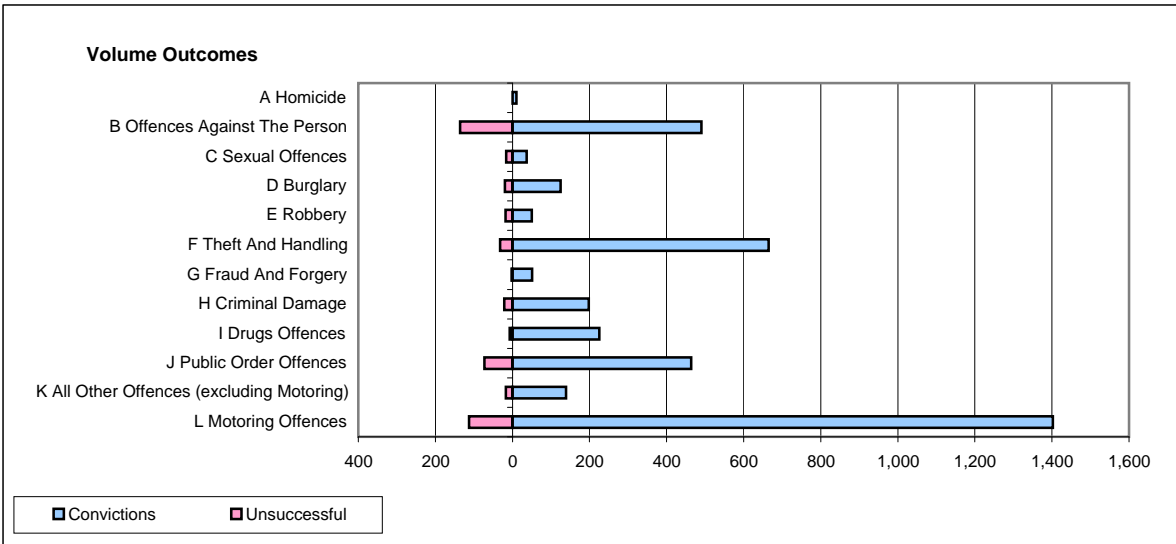
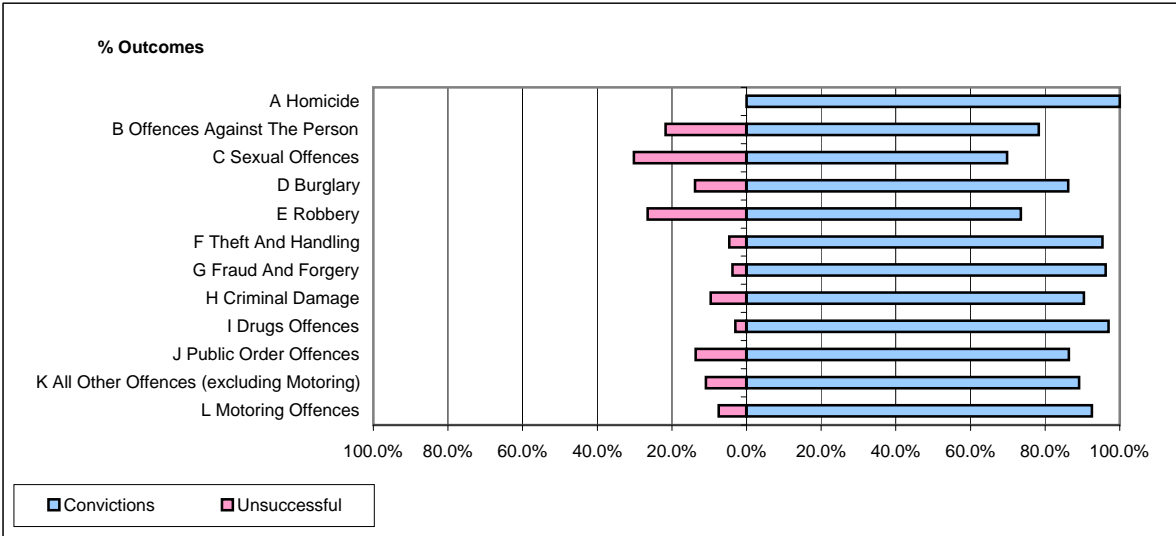


**CPS OUTCOMES BY PRINCIPAL OFFENCE CATEGORY**

**April 2009**

**P15-GreaterManchester**



	Convictions		Unsuccessful	
	Number of Defendants	%	Number of Defendants	%
<b>A Homicide</b>	<b>10</b>	<b>100.0%</b>	<b>0</b>	<b>0.0%</b>
<b>B Offences Against The Person</b>	<b>490</b>	<b>78.3%</b>	<b>136</b>	<b>21.7%</b>
<b>C Sexual Offences</b>	<b>37</b>	<b>69.8%</b>	<b>16</b>	<b>30.2%</b>
<b>D Burglary</b>	<b>125</b>	<b>86.2%</b>	<b>20</b>	<b>13.8%</b>
<b>E Robbery</b>	<b>50</b>	<b>73.5%</b>	<b>18</b>	<b>26.5%</b>
<b>F Theft And Handling</b>	<b>665</b>	<b>95.4%</b>	<b>32</b>	<b>4.6%</b>
<b>G Fraud And Forgery</b>	<b>51</b>	<b>96.2%</b>	<b>2</b>	<b>3.8%</b>
<b>H Criminal Damage</b>	<b>198</b>	<b>90.4%</b>	<b>21</b>	<b>9.6%</b>
<b>I Drugs Offences</b>	<b>225</b>	<b>97.0%</b>	<b>7</b>	<b>3.0%</b>
<b>J Public Order Offences</b>	<b>464</b>	<b>86.4%</b>	<b>73</b>	<b>13.6%</b>
<b>K All Other Offences (excluding Motoring)</b>	<b>139</b>	<b>89.1%</b>	<b>17</b>	<b>10.9%</b>
<b>L Motoring Offences</b>	<b>1,402</b>	<b>92.5%</b>	<b>113</b>	<b>7.5%</b>
<b>Admin Finalisations</b>	<b>0</b>	<b>0.0%</b>	<b>60</b>	<b>100.0%</b>
<b>TOTAL</b>	<b>3,856</b>	<b>88.2%</b>	<b>515</b>	<b>11.8%</b>