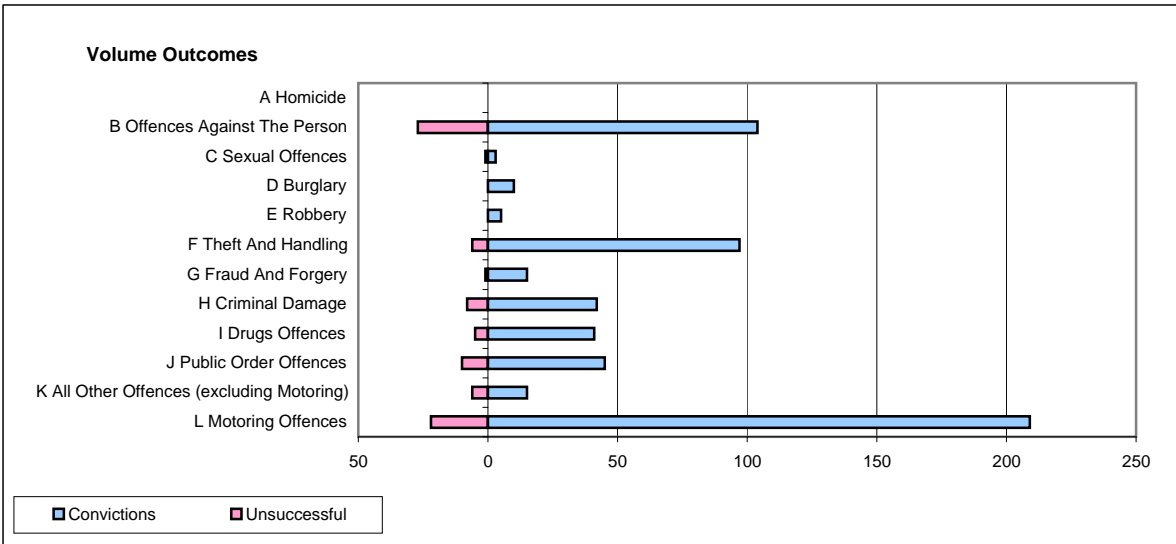
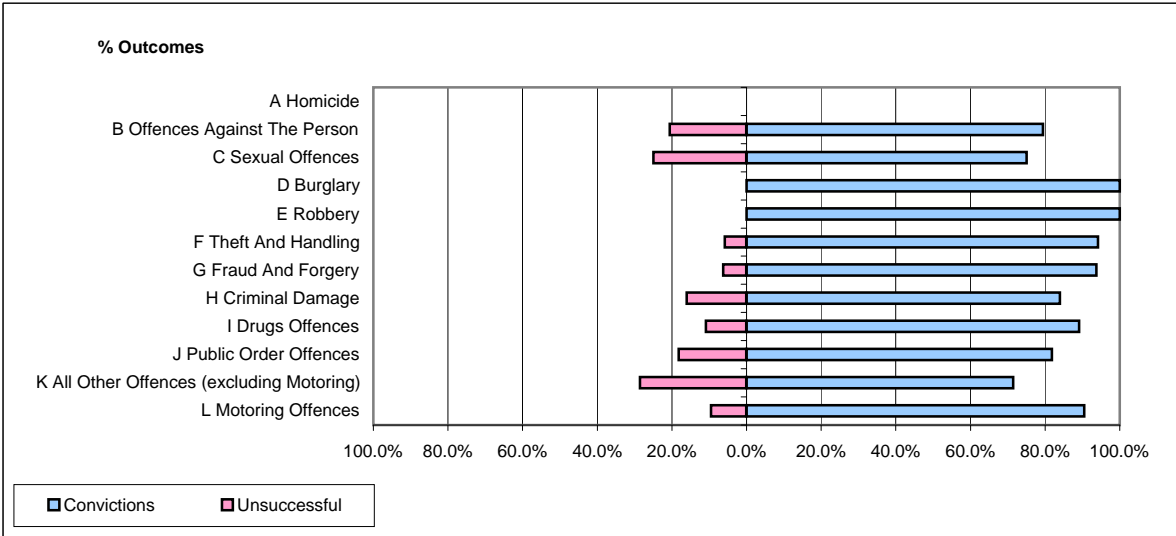


CPS OUTCOMES BY PRINCIPAL OFFENCE CATEGORY

April 2009

P14-Gloucestershire



	Convictions		Unsuccessful	
	Number of Defendants	%	Number of Defendants	%
A Homicide	0	0	0	0
B Offences Against The Person	104	79.4%	27	20.6%
C Sexual Offences	3	75.0%	1	25.0%
D Burglary	10	100.0%	0	0.0%
E Robbery	5	100.0%	0	0.0%
F Theft And Handling	97	94.2%	6	5.8%
G Fraud And Forgery	15	93.8%	1	6.3%
H Criminal Damage	42	84.0%	8	16.0%
I Drugs Offences	41	89.1%	5	10.9%
J Public Order Offences	45	81.8%	10	18.2%
K All Other Offences (excluding Motoring)	15	71.4%	6	28.6%
L Motoring Offences	209	90.5%	22	9.5%
Admin Finalisations	0	0.0%	13	100.0%
TOTAL	586	85.5%	99	14.5%