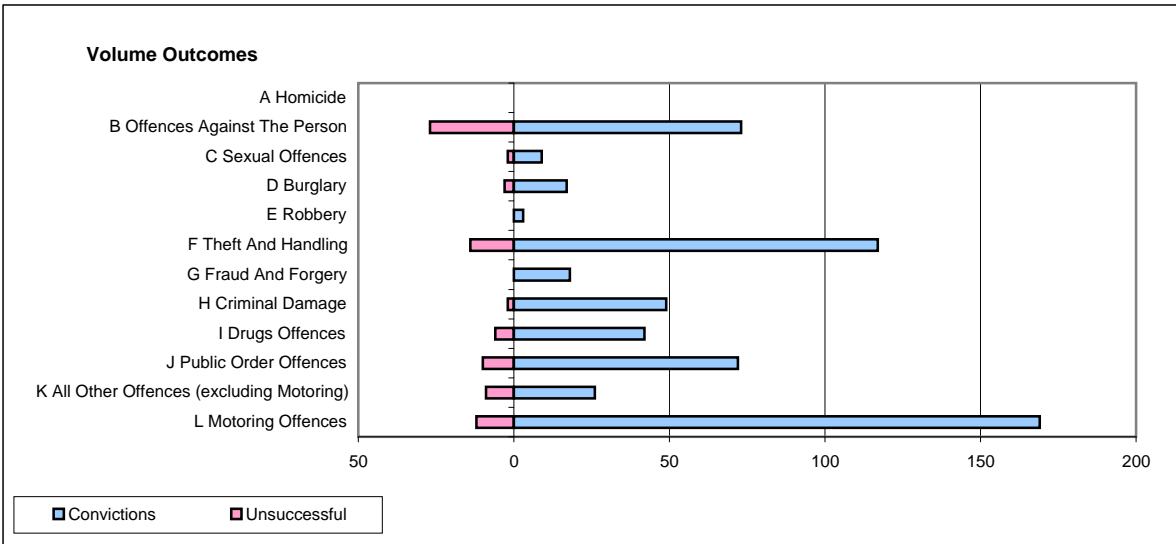
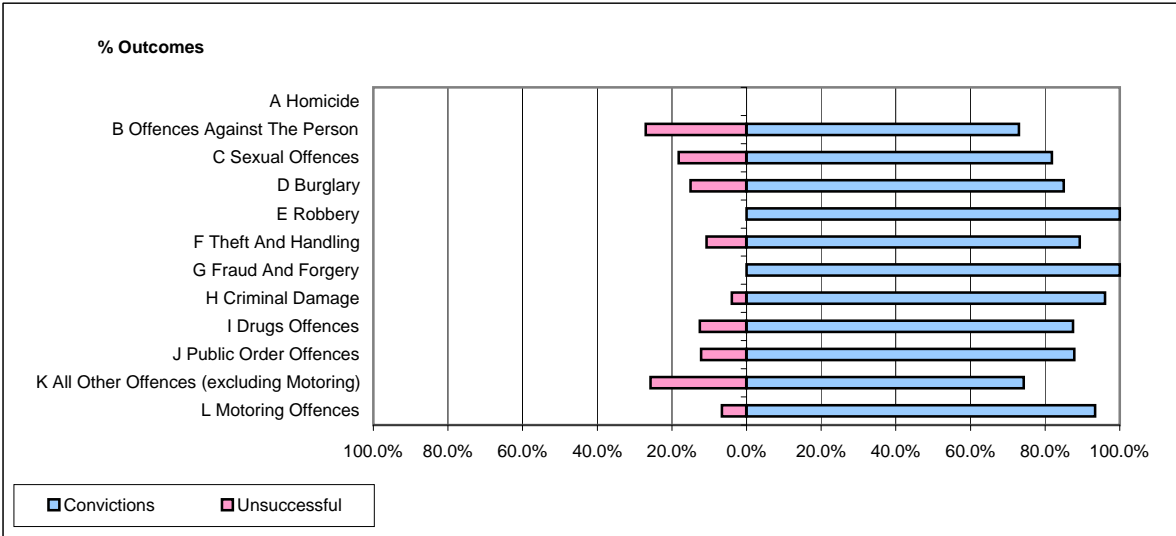


CPS OUTCOMES BY PRINCIPAL OFFENCE CATEGORY

April 2009

P11-Durham



	Convictions		Unsuccessful	
	Number of Defendants	%	Number of Defendants	%
A Homicide	0	0	0	0
B Offences Against The Person	73	73.0%	27	27.0%
C Sexual Offences	9	81.8%	2	18.2%
D Burglary	17	85.0%	3	15.0%
E Robbery	3	100.0%	0	0.0%
F Theft And Handling	117	89.3%	14	10.7%
G Fraud And Forgery	18	100.0%	0	0.0%
H Criminal Damage	49	96.1%	2	3.9%
I Drugs Offences	42	87.5%	6	12.5%
J Public Order Offences	72	87.8%	10	12.2%
K All Other Offences (excluding Motoring)	26	74.3%	9	25.7%
L Motoring Offences	169	93.4%	12	6.6%
Admin Finalisations	0	0.0%	4	100.0%
TOTAL	595	87.0%	89	13.0%