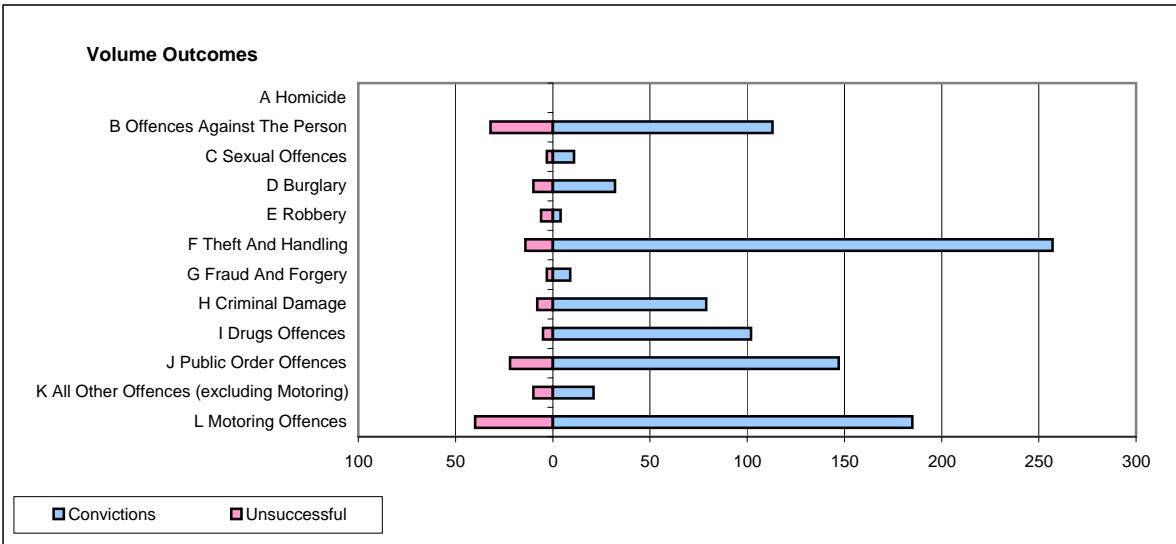
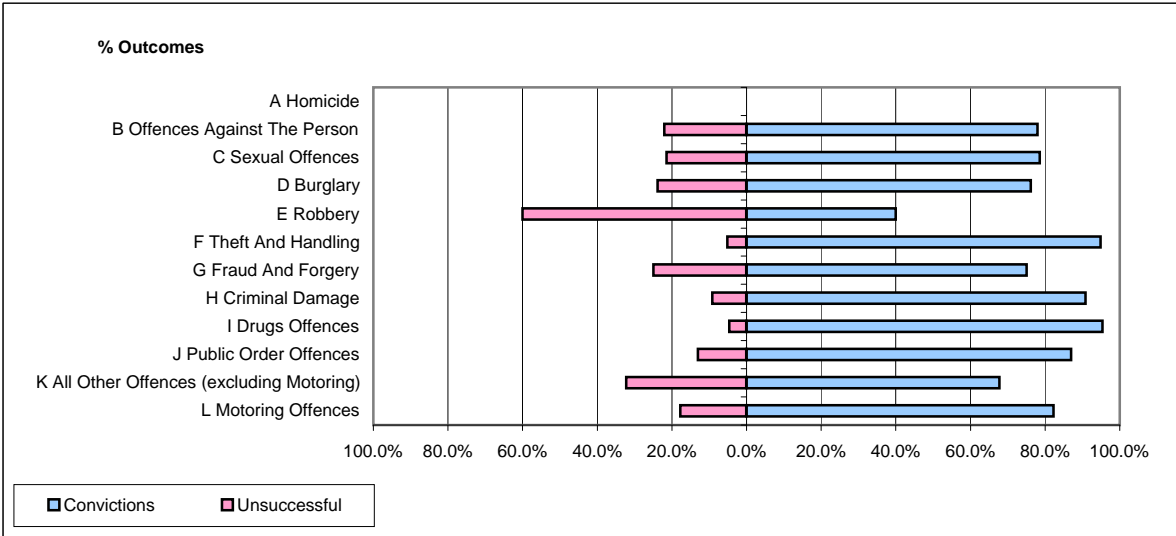


**CPS OUTCOMES BY PRINCIPAL OFFENCE CATEGORY**

**April 2009**

**P06-Cleveland**



	Convictions		Unsuccessful	
	Number of Defendants	%	Number of Defendants	%
<b>A Homicide</b>	<b>0</b>	<b>0</b>	<b>0</b>	<b>0</b>
<b>B Offences Against The Person</b>	<b>113</b>	<b>77.9%</b>	<b>32</b>	<b>22.1%</b>
<b>C Sexual Offences</b>	<b>11</b>	<b>78.6%</b>	<b>3</b>	<b>21.4%</b>
<b>D Burglary</b>	<b>32</b>	<b>76.2%</b>	<b>10</b>	<b>23.8%</b>
<b>E Robbery</b>	<b>4</b>	<b>40.0%</b>	<b>6</b>	<b>60.0%</b>
<b>F Theft And Handling</b>	<b>257</b>	<b>94.8%</b>	<b>14</b>	<b>5.2%</b>
<b>G Fraud And Forgery</b>	<b>9</b>	<b>75.0%</b>	<b>3</b>	<b>25.0%</b>
<b>H Criminal Damage</b>	<b>79</b>	<b>90.8%</b>	<b>8</b>	<b>9.2%</b>
<b>I Drugs Offences</b>	<b>102</b>	<b>95.3%</b>	<b>5</b>	<b>4.7%</b>
<b>J Public Order Offences</b>	<b>147</b>	<b>87.0%</b>	<b>22</b>	<b>13.0%</b>
<b>K All Other Offences (excluding Motoring)</b>	<b>21</b>	<b>67.7%</b>	<b>10</b>	<b>32.3%</b>
<b>L Motoring Offences</b>	<b>185</b>	<b>82.2%</b>	<b>40</b>	<b>17.8%</b>
<b>Admin Finalisations</b>	<b>0</b>	<b>0.0%</b>	<b>12</b>	<b>100.0%</b>
<b>TOTAL</b>	<b>960</b>	<b>85.3%</b>	<b>165</b>	<b>14.7%</b>