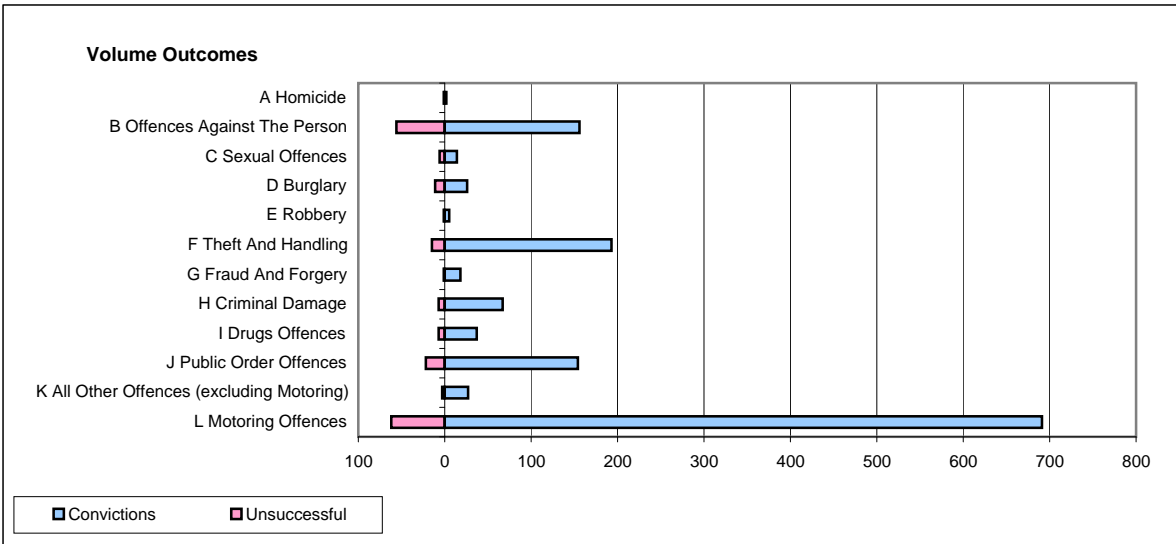
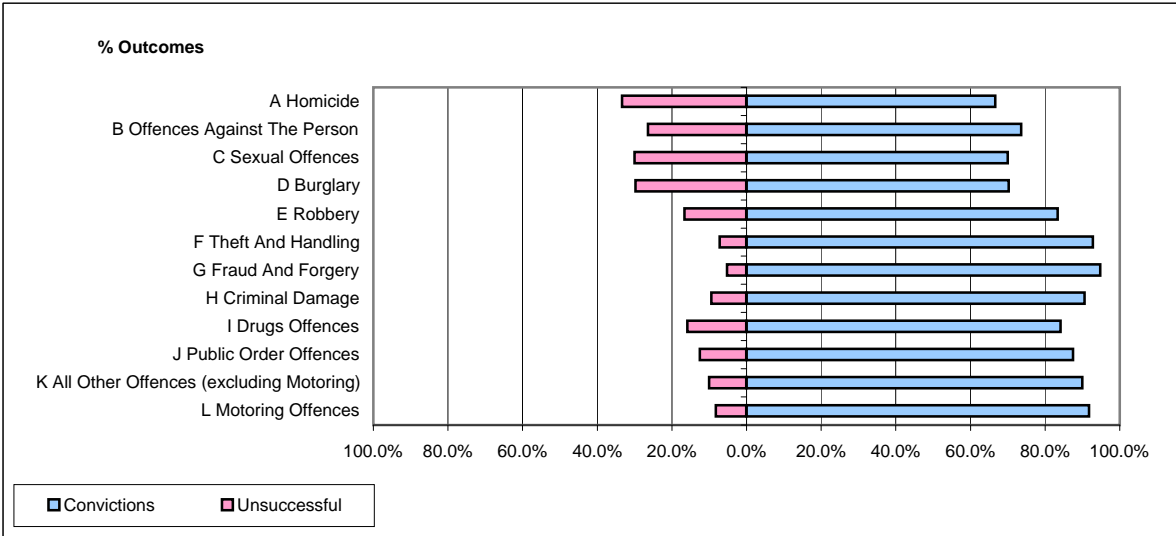


CPS OUTCOMES BY PRINCIPAL OFFENCE CATEGORY

April 2009

P04-Cheshire



	Convictions		Unsuccessful	
	Number of Defendants	%	Number of Defendants	%
A Homicide	2	66.7%	1	33.3%
B Offences Against The Person	156	73.6%	56	26.4%
C Sexual Offences	14	70.0%	6	30.0%
D Burglary	26	70.3%	11	29.7%
E Robbery	5	83.3%	1	16.7%
F Theft And Handling	193	92.8%	15	7.2%
G Fraud And Forgery	18	94.7%	1	5.3%
H Criminal Damage	67	90.5%	7	9.5%
I Drugs Offences	37	84.1%	7	15.9%
J Public Order Offences	154	87.5%	22	12.5%
K All Other Offences (excluding Motoring)	27	90.0%	3	10.0%
L Motoring Offences	691	91.8%	62	8.2%
Admin Finalisations	0	0.0%	7	100.0%
TOTAL	1,390	87.5%	199	12.5%