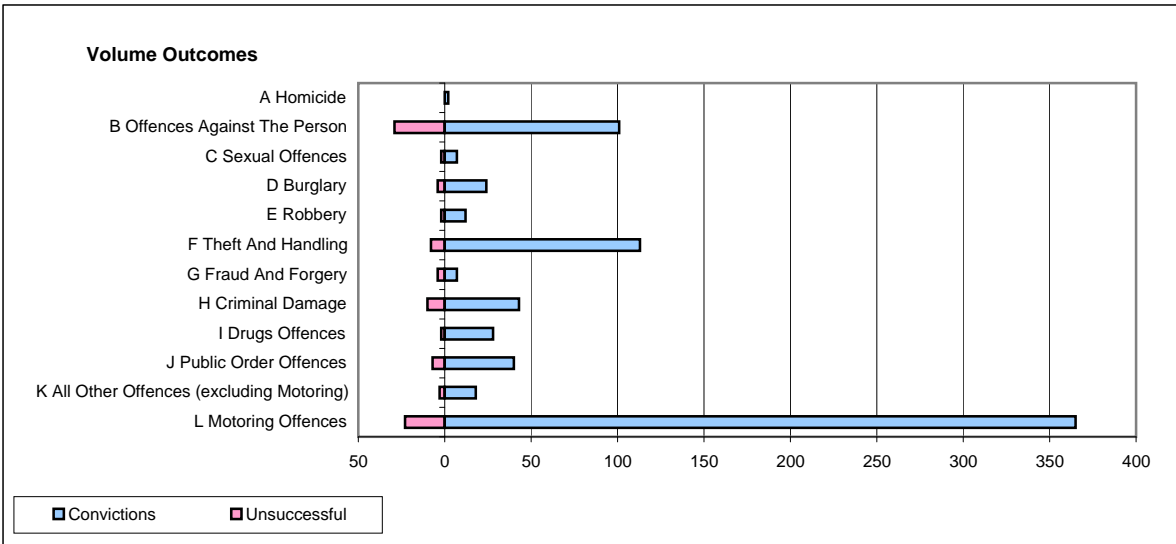
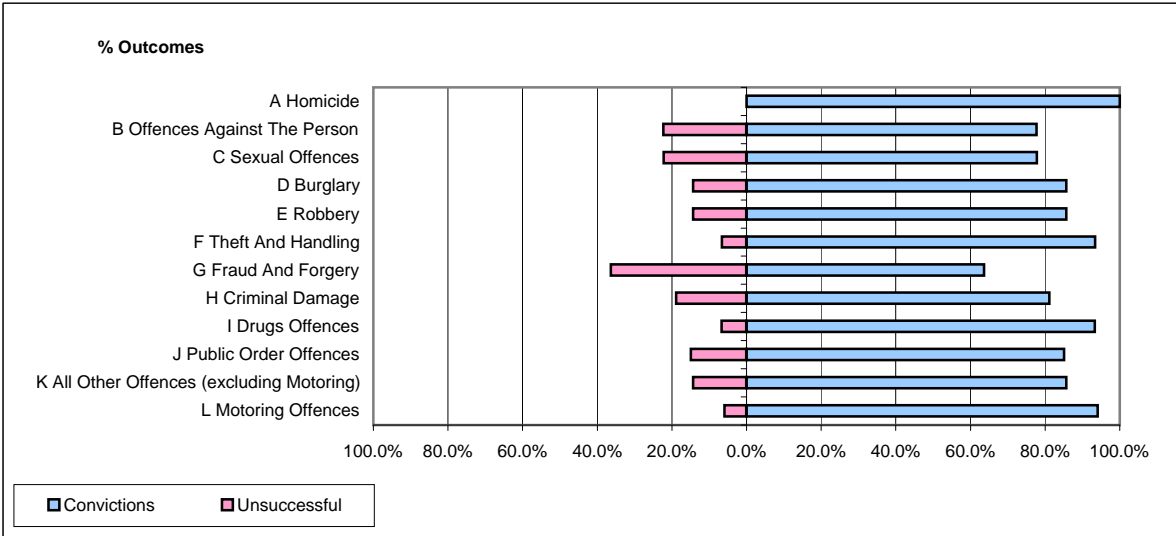


**CPS OUTCOMES BY PRINCIPAL OFFENCE CATEGORY**

**April 2009**

**P02-Bedfordshire**



	Convictions		Unsuccessful	
	Number of Defendants	%	Number of Defendants	%
<b>A Homicide</b>	<b>2</b>	<b>100.0%</b>	<b>0</b>	<b>0.0%</b>
<b>B Offences Against The Person</b>	<b>101</b>	<b>77.7%</b>	<b>29</b>	<b>22.3%</b>
<b>C Sexual Offences</b>	<b>7</b>	<b>77.8%</b>	<b>2</b>	<b>22.2%</b>
<b>D Burglary</b>	<b>24</b>	<b>85.7%</b>	<b>4</b>	<b>14.3%</b>
<b>E Robbery</b>	<b>12</b>	<b>85.7%</b>	<b>2</b>	<b>14.3%</b>
<b>F Theft And Handling</b>	<b>113</b>	<b>93.4%</b>	<b>8</b>	<b>6.6%</b>
<b>G Fraud And Forgery</b>	<b>7</b>	<b>63.6%</b>	<b>4</b>	<b>36.4%</b>
<b>H Criminal Damage</b>	<b>43</b>	<b>81.1%</b>	<b>10</b>	<b>18.9%</b>
<b>I Drugs Offences</b>	<b>28</b>	<b>93.3%</b>	<b>2</b>	<b>6.7%</b>
<b>J Public Order Offences</b>	<b>40</b>	<b>85.1%</b>	<b>7</b>	<b>14.9%</b>
<b>K All Other Offences (excluding Motoring)</b>	<b>18</b>	<b>85.7%</b>	<b>3</b>	<b>14.3%</b>
<b>L Motoring Offences</b>	<b>365</b>	<b>94.1%</b>	<b>23</b>	<b>5.9%</b>
<b>Admin Finalisations</b>	<b>0</b>	<b>0.0%</b>	<b>11</b>	<b>100.0%</b>
<b>TOTAL</b>	<b>760</b>	<b>87.9%</b>	<b>105</b>	<b>12.1%</b>