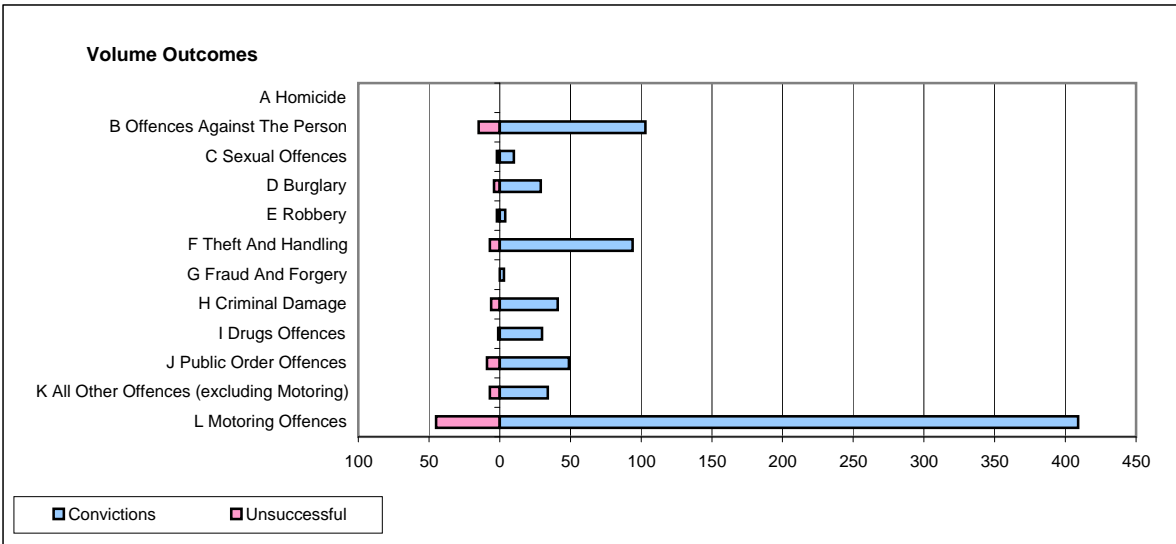
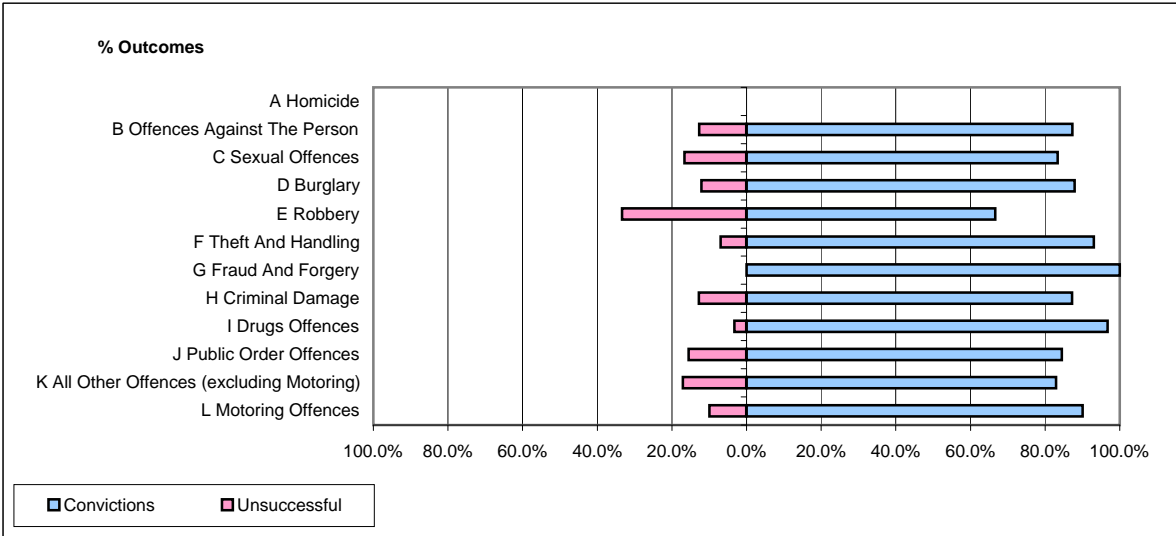


CPS OUTCOMES BY PRINCIPAL OFFENCE CATEGORY

March 2009

P43-Wiltshire



| | Convictions | | Unsuccessful | |
|--|----------------------|---------------|----------------------|---------------|
| | Number of Defendants | % | Number of Defendants | % |
| A Homicide | 0 | 0 | 0 | 0 |
| B Offences Against The Person | 103 | 87.3% | 15 | 12.7% |
| C Sexual Offences | 10 | 83.3% | 2 | 16.7% |
| D Burglary | 29 | 87.9% | 4 | 12.1% |
| E Robbery | 4 | 66.7% | 2 | 33.3% |
| F Theft And Handling | 94 | 93.1% | 7 | 6.9% |
| G Fraud And Forgery | 3 | 100.0% | 0 | 0.0% |
| H Criminal Damage | 41 | 87.2% | 6 | 12.8% |
| I Drugs Offences | 30 | 96.8% | 1 | 3.2% |
| J Public Order Offences | 49 | 84.5% | 9 | 15.5% |
| K All Other Offences (excluding Motoring) | 34 | 82.9% | 7 | 17.1% |
| L Motoring Offences | 409 | 90.1% | 45 | 9.9% |
| Admin Finalisations | 0 | 0.0% | 5 | 100.0% |
| TOTAL | 806 | 88.7% | 103 | 11.3% |