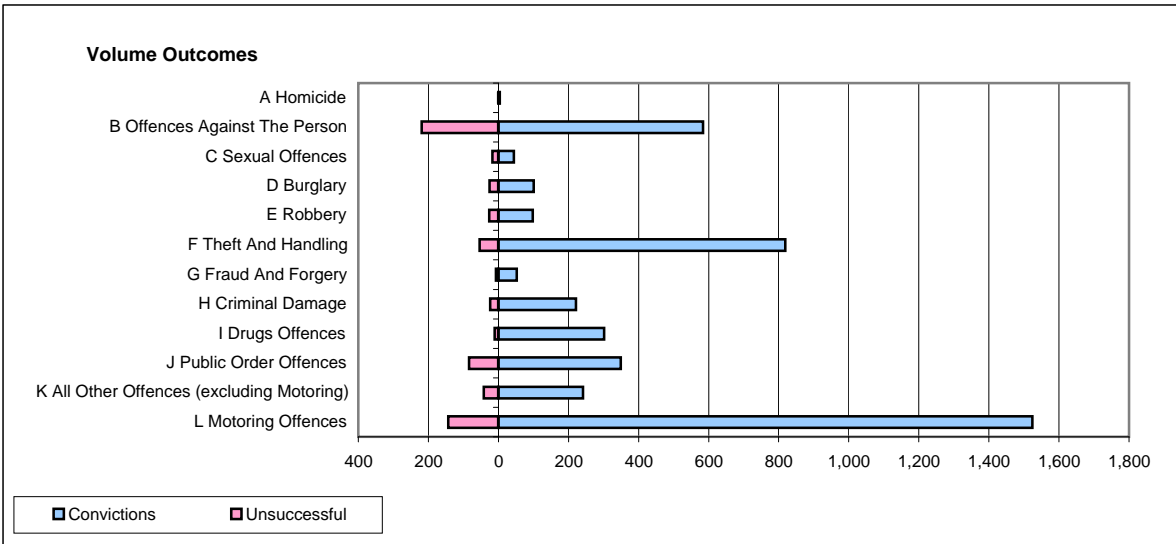
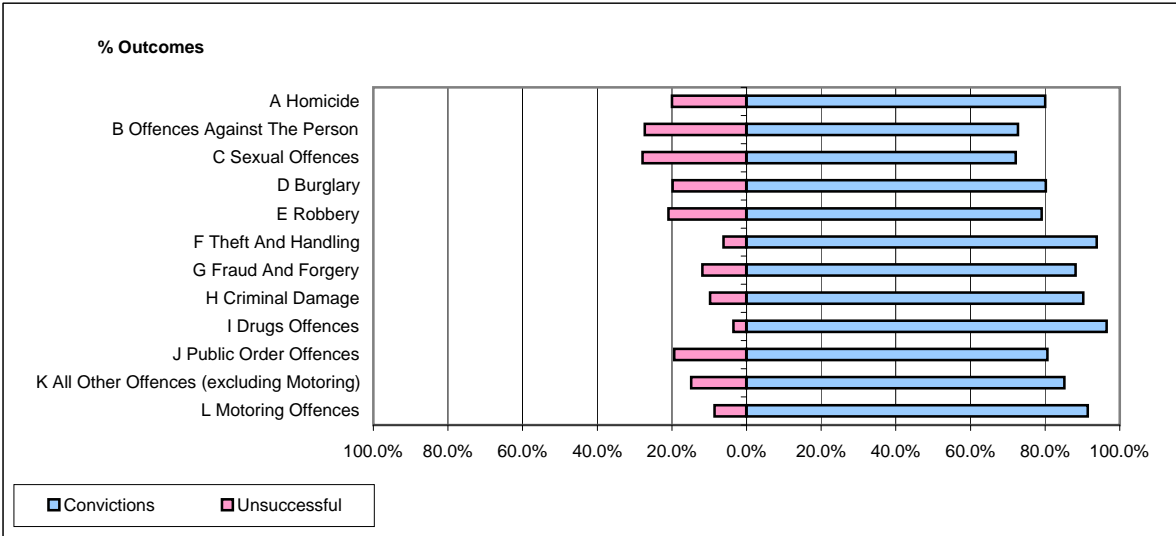


CPS OUTCOMES BY PRINCIPAL OFFENCE CATEGORY

March 2009

P41-WestMidlands



	Convictions		Unsuccessful	
	Number of Defendants	%	Number of Defendants	%
A Homicide	4	80.0%	1	20.0%
B Offences Against The Person	584	72.7%	219	27.3%
C Sexual Offences	44	72.1%	17	27.9%
D Burglary	101	80.2%	25	19.8%
E Robbery	98	79.0%	26	21.0%
F Theft And Handling	819	93.8%	54	6.2%
G Fraud And Forgery	52	88.1%	7	11.9%
H Criminal Damage	221	90.2%	24	9.8%
I Drugs Offences	302	96.5%	11	3.5%
J Public Order Offences	349	80.6%	84	19.4%
K All Other Offences (excluding Motoring)	241	85.2%	42	14.8%
L Motoring Offences	1,524	91.4%	143	8.6%
Admin Finalisations	0	0.0%	47	100.0%
TOTAL	4,339	86.1%	700	13.9%