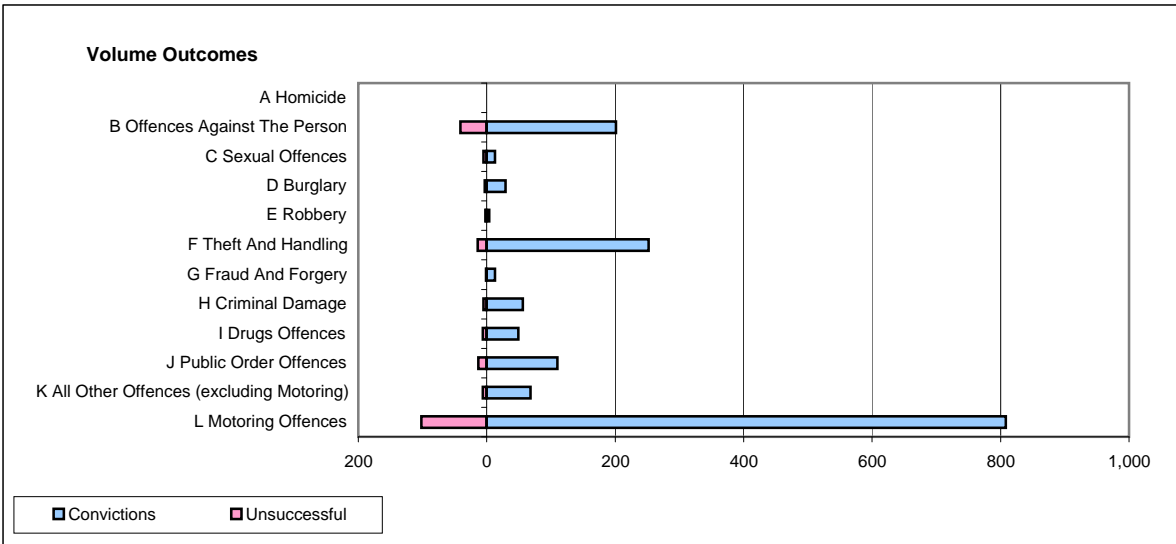
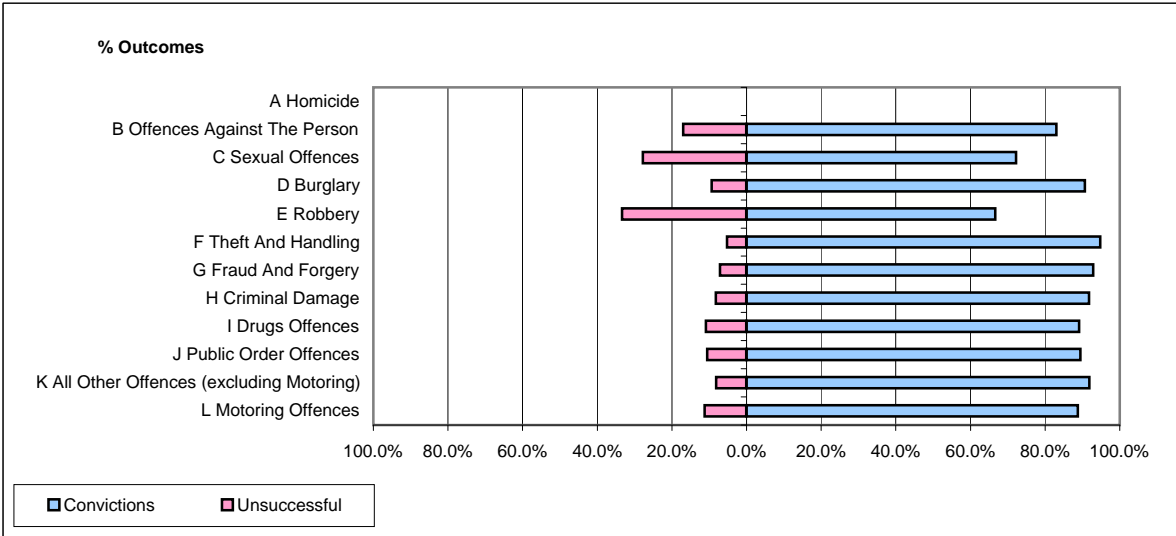


CPS OUTCOMES BY PRINCIPAL OFFENCE CATEGORY

March 2009

P40-WestMercia



	Convictions		Unsuccessful	
	Number of Defendants	%	Number of Defendants	%
A Homicide	0	0	0	0
B Offences Against The Person	201	83.1%	41	16.9%
C Sexual Offences	13	72.2%	5	27.8%
D Burglary	29	90.6%	3	9.4%
E Robbery	4	66.7%	2	33.3%
F Theft And Handling	252	94.7%	14	5.3%
G Fraud And Forgery	13	92.9%	1	7.1%
H Criminal Damage	56	91.8%	5	8.2%
I Drugs Offences	49	89.1%	6	10.9%
J Public Order Offences	110	89.4%	13	10.6%
K All Other Offences (excluding Motoring)	68	91.9%	6	8.1%
L Motoring Offences	808	88.8%	102	11.2%
Admin Finalisations	0	0.0%	15	100.0%
TOTAL	1,603	88.3%	213	11.7%