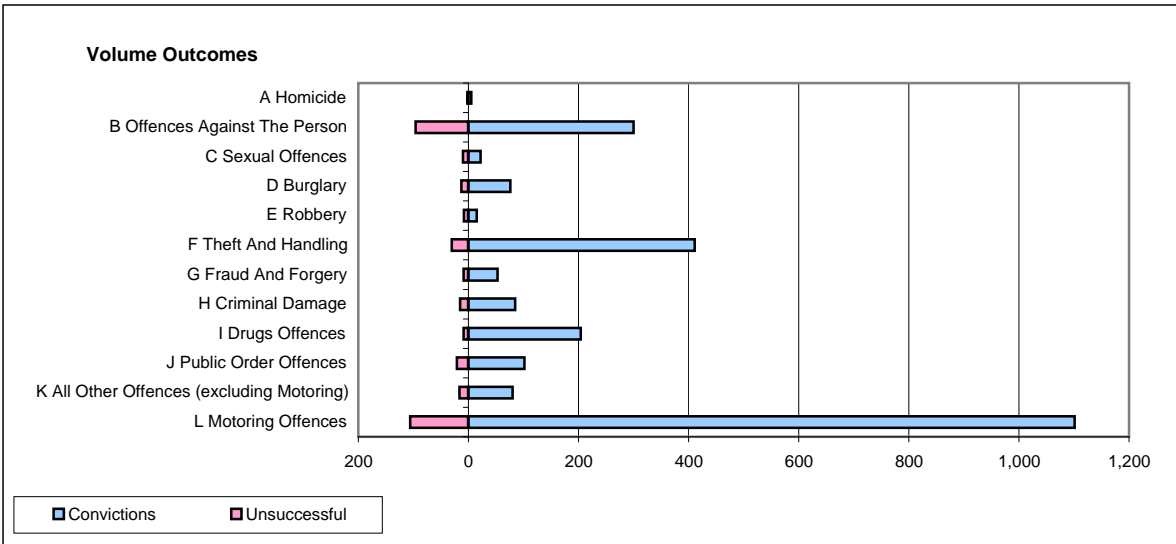
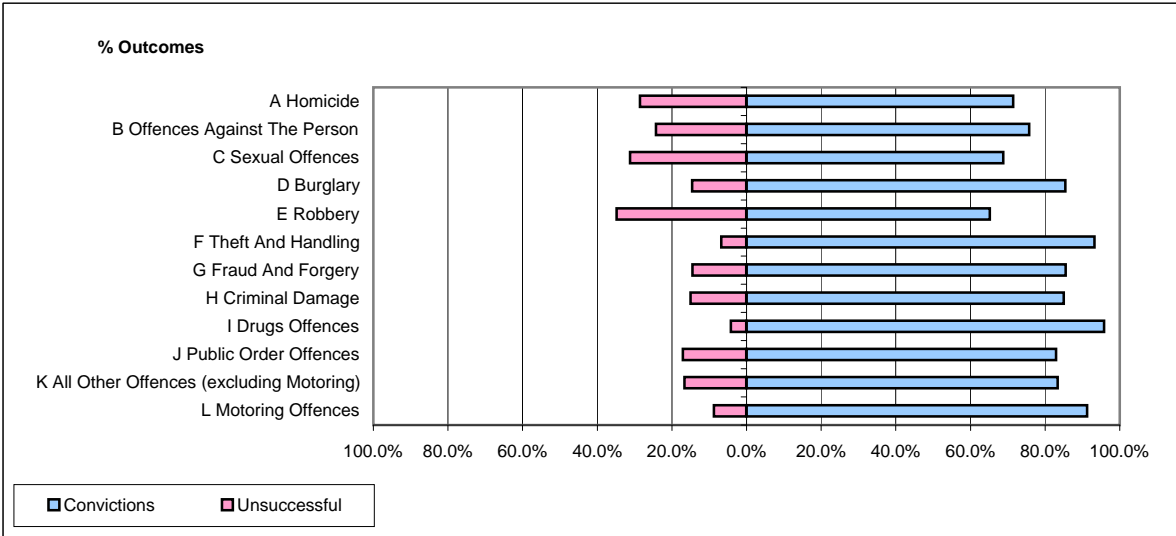


**CPS OUTCOMES BY PRINCIPAL OFFENCE CATEGORY**

**March 2009**

**P38-ThamesValley**



	Convictions		Unsuccessful	
	Number of Defendants	%	Number of Defendants	%
<b>A Homicide</b>	5	71.4%	2	28.6%
<b>B Offences Against The Person</b>	300	75.8%	96	24.2%
<b>C Sexual Offences</b>	22	68.8%	10	31.3%
<b>D Burglary</b>	76	85.4%	13	14.6%
<b>E Robbery</b>	15	65.2%	8	34.8%
<b>F Theft And Handling</b>	411	93.2%	30	6.8%
<b>G Fraud And Forgery</b>	53	85.5%	9	14.5%
<b>H Criminal Damage</b>	85	85.0%	15	15.0%
<b>I Drugs Offences</b>	204	95.8%	9	4.2%
<b>J Public Order Offences</b>	102	82.9%	21	17.1%
<b>K All Other Offences (excluding Motoring)</b>	80	83.3%	16	16.7%
<b>L Motoring Offences</b>	1,101	91.2%	106	8.8%
<b>Admin Finalisations</b>	0	0.0%	84	100.0%
<b>TOTAL</b>	2,454	85.4%	419	14.6%