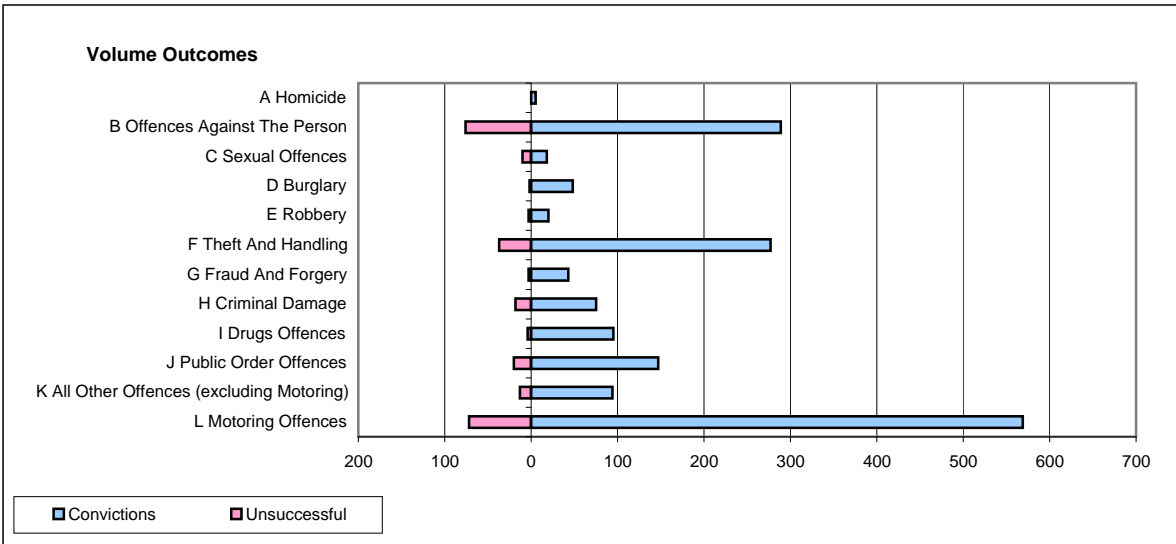
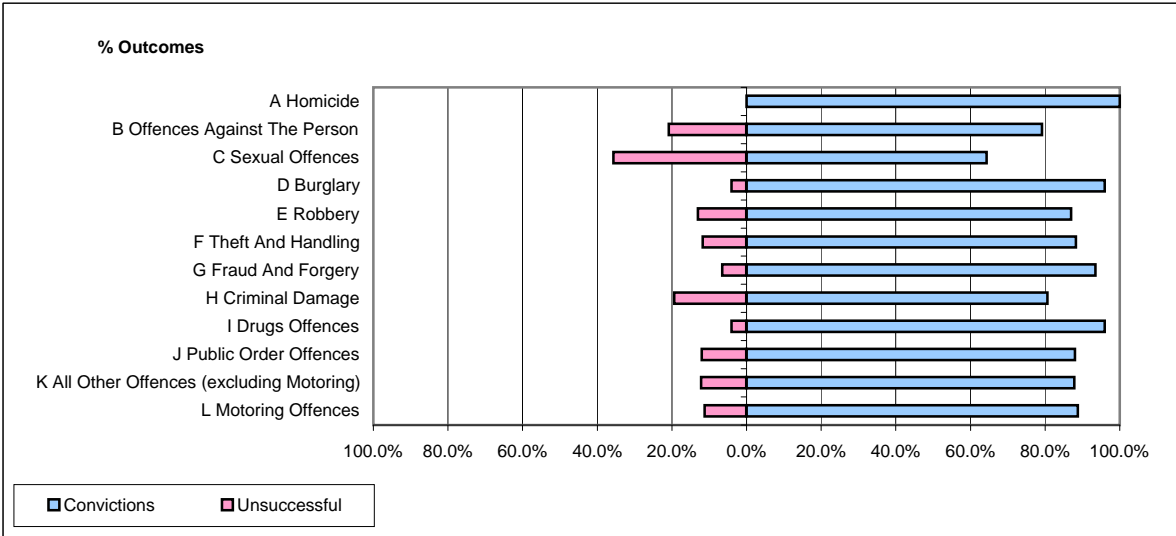


**CPS OUTCOMES BY PRINCIPAL OFFENCE CATEGORY**

**March 2009**

**P37-Sussex**



	Convictions		Unsuccessful	
	Number of Defendants	%	Number of Defendants	%
<b>A Homicide</b>	<b>5</b>	<b>100.0%</b>	<b>0</b>	<b>0.0%</b>
<b>B Offences Against The Person</b>	<b>289</b>	<b>79.2%</b>	<b>76</b>	<b>20.8%</b>
<b>C Sexual Offences</b>	<b>18</b>	<b>64.3%</b>	<b>10</b>	<b>35.7%</b>
<b>D Burglary</b>	<b>48</b>	<b>96.0%</b>	<b>2</b>	<b>4.0%</b>
<b>E Robbery</b>	<b>20</b>	<b>87.0%</b>	<b>3</b>	<b>13.0%</b>
<b>F Theft And Handling</b>	<b>277</b>	<b>88.2%</b>	<b>37</b>	<b>11.8%</b>
<b>G Fraud And Forgery</b>	<b>43</b>	<b>93.5%</b>	<b>3</b>	<b>6.5%</b>
<b>H Criminal Damage</b>	<b>75</b>	<b>80.6%</b>	<b>18</b>	<b>19.4%</b>
<b>I Drugs Offences</b>	<b>95</b>	<b>96.0%</b>	<b>4</b>	<b>4.0%</b>
<b>J Public Order Offences</b>	<b>147</b>	<b>88.0%</b>	<b>20</b>	<b>12.0%</b>
<b>K All Other Offences (excluding Motoring)</b>	<b>94</b>	<b>87.9%</b>	<b>13</b>	<b>12.1%</b>
<b>L Motoring Offences</b>	<b>569</b>	<b>88.8%</b>	<b>72</b>	<b>11.2%</b>
<b>Admin Finalisations</b>	<b>0</b>	<b>0.0%</b>	<b>33</b>	<b>100.0%</b>
<b>TOTAL</b>	<b>1,680</b>	<b>85.2%</b>	<b>291</b>	<b>14.8%</b>