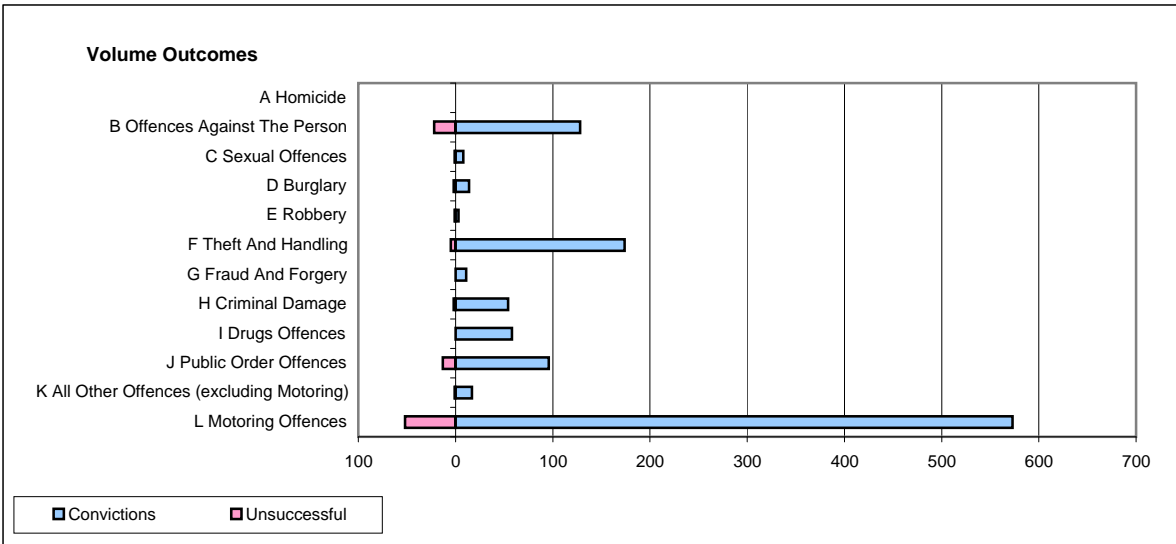
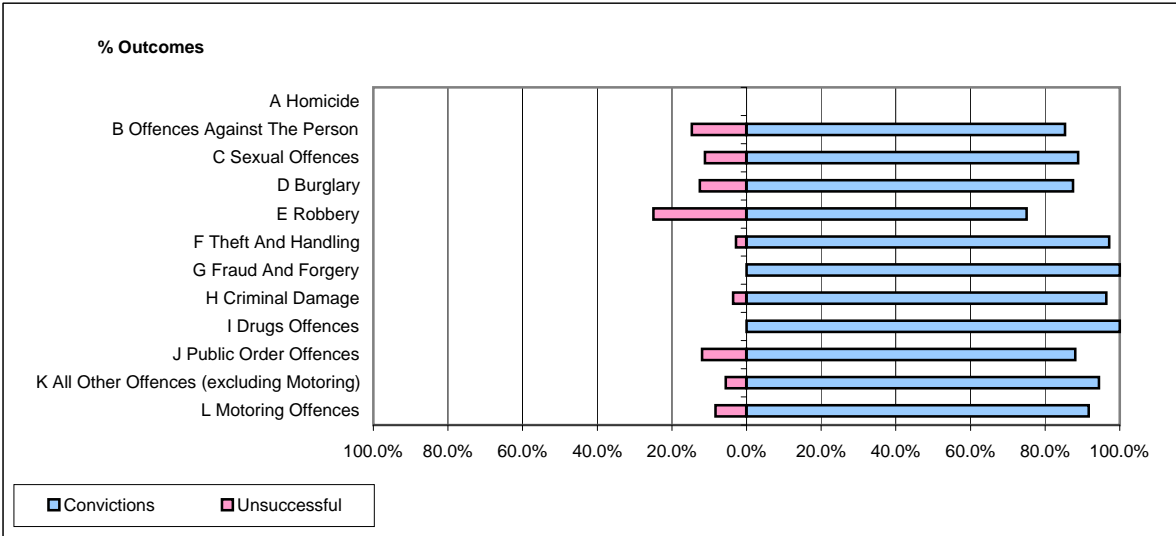


CPS OUTCOMES BY PRINCIPAL OFFENCE CATEGORY

March 2009

P35-Suffolk



	Convictions		Unsuccessful	
	Number of Defendants	%	Number of Defendants	%
A Homicide	0	0	0	0
B Offences Against The Person	128	85.3%	22	14.7%
C Sexual Offences	8	88.9%	1	11.1%
D Burglary	14	87.5%	2	12.5%
E Robbery	3	75.0%	1	25.0%
F Theft And Handling	174	97.2%	5	2.8%
G Fraud And Forgery	11	100.0%	0	0.0%
H Criminal Damage	54	96.4%	2	3.6%
I Drugs Offences	58	100.0%	0	0.0%
J Public Order Offences	96	88.1%	13	11.9%
K All Other Offences (excluding Motoring)	17	94.4%	1	5.6%
L Motoring Offences	573	91.7%	52	8.3%
Admin Finalisations	0	0.0%	14	100.0%
TOTAL	1,136	91.0%	113	9.0%