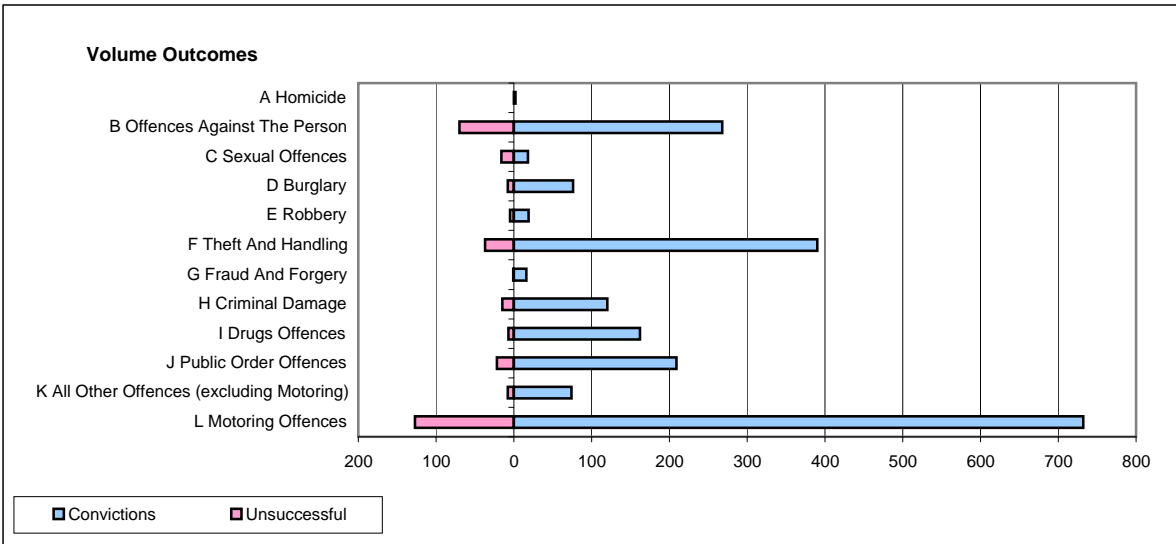
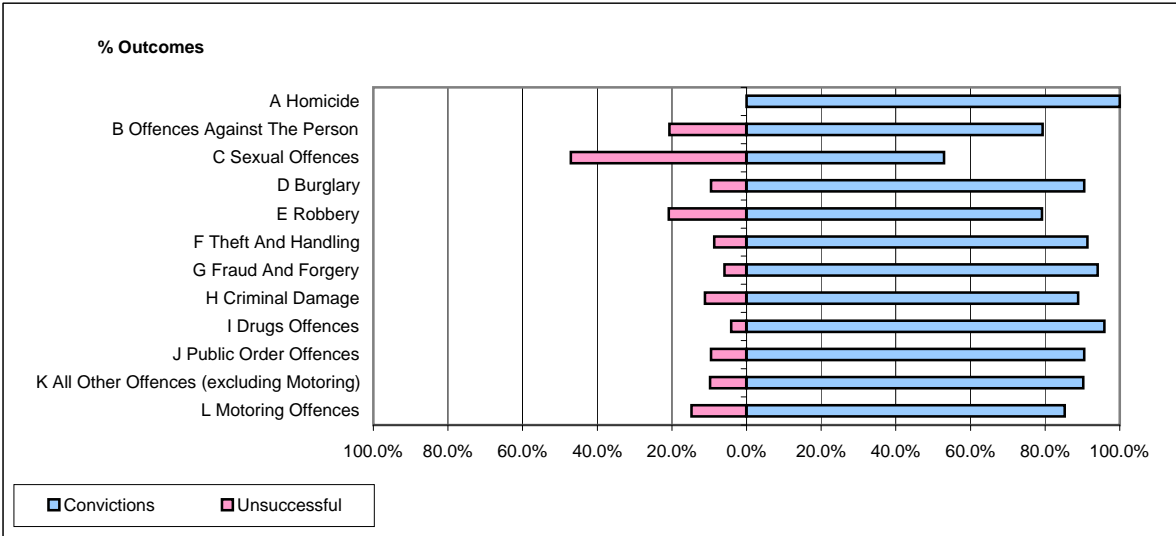


CPS OUTCOMES BY PRINCIPAL OFFENCE CATEGORY

March 2009

P32-SouthWales



	Convictions		Unsuccessful	
	Number of Defendants	%	Number of Defendants	%
A Homicide	2	100.0%	0	0.0%
B Offences Against The Person	268	79.3%	70	20.7%
C Sexual Offences	18	52.9%	16	47.1%
D Burglary	76	90.5%	8	9.5%
E Robbery	19	79.2%	5	20.8%
F Theft And Handling	390	91.3%	37	8.7%
G Fraud And Forgery	16	94.1%	1	5.9%
H Criminal Damage	120	88.9%	15	11.1%
I Drugs Offences	162	95.9%	7	4.1%
J Public Order Offences	209	90.5%	22	9.5%
K All Other Offences (excluding Motoring)	74	90.2%	8	9.8%
L Motoring Offences	732	85.2%	127	14.8%
Admin Finalisations	0	0.0%	54	100.0%
TOTAL	2,086	84.9%	370	15.1%