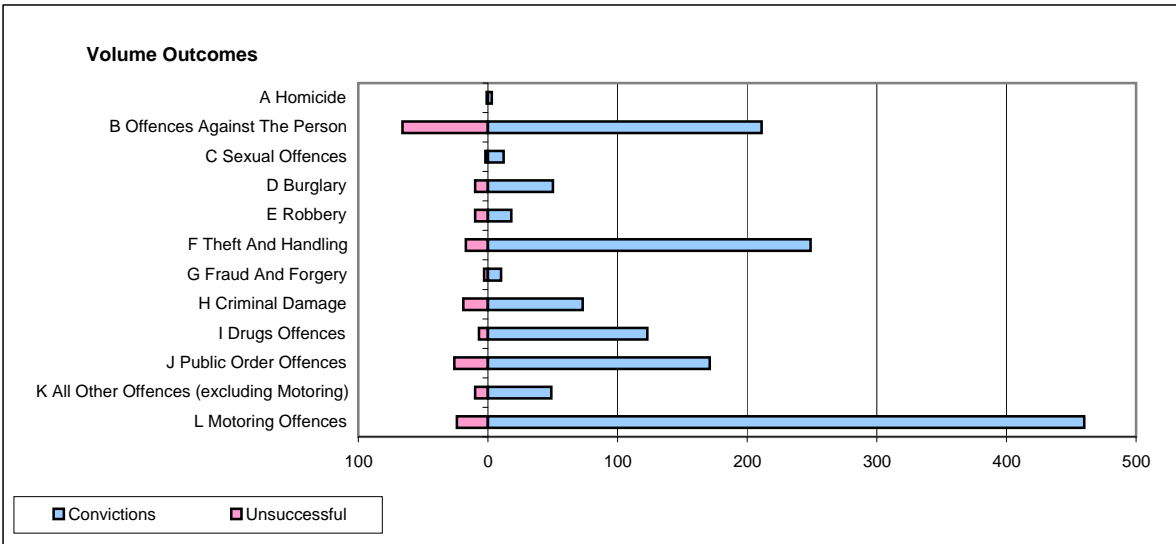
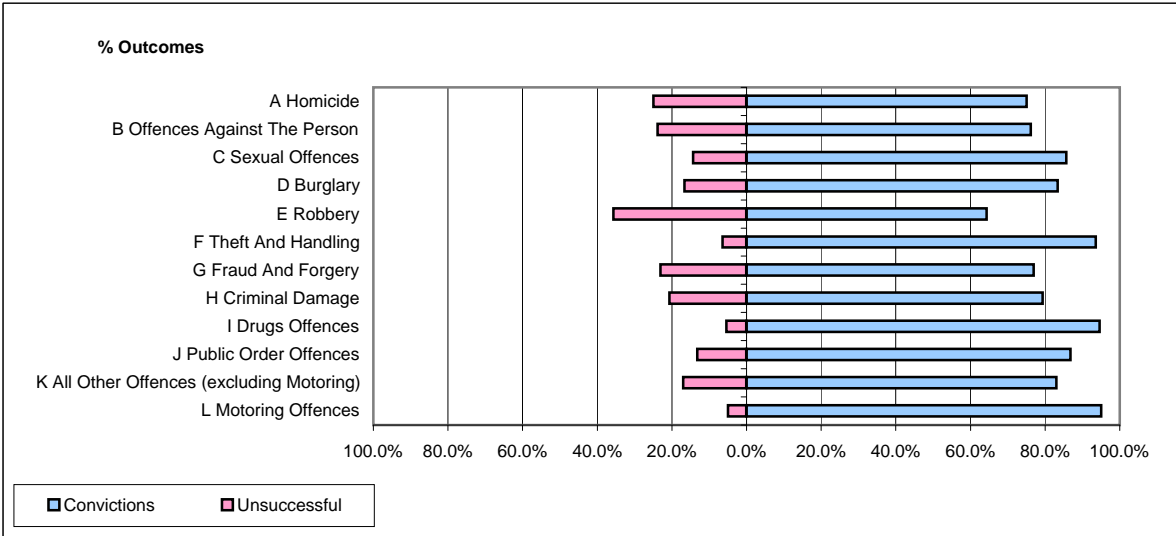


**CPS OUTCOMES BY PRINCIPAL OFFENCE CATEGORY**

**March 2009**

**P31-Nottinghamshire**



	Convictions		Unsuccessful	
	Number of Defendants	%	Number of Defendants	%
<b>A Homicide</b>	<b>3</b>	<b>75.0%</b>	<b>1</b>	<b>25.0%</b>
<b>B Offences Against The Person</b>	<b>211</b>	<b>76.2%</b>	<b>66</b>	<b>23.8%</b>
<b>C Sexual Offences</b>	<b>12</b>	<b>85.7%</b>	<b>2</b>	<b>14.3%</b>
<b>D Burglary</b>	<b>50</b>	<b>83.3%</b>	<b>10</b>	<b>16.7%</b>
<b>E Robbery</b>	<b>18</b>	<b>64.3%</b>	<b>10</b>	<b>35.7%</b>
<b>F Theft And Handling</b>	<b>249</b>	<b>93.6%</b>	<b>17</b>	<b>6.4%</b>
<b>G Fraud And Forgery</b>	<b>10</b>	<b>76.9%</b>	<b>3</b>	<b>23.1%</b>
<b>H Criminal Damage</b>	<b>73</b>	<b>79.3%</b>	<b>19</b>	<b>20.7%</b>
<b>I Drugs Offences</b>	<b>123</b>	<b>94.6%</b>	<b>7</b>	<b>5.4%</b>
<b>J Public Order Offences</b>	<b>171</b>	<b>86.8%</b>	<b>26</b>	<b>13.2%</b>
<b>K All Other Offences (excluding Motoring)</b>	<b>49</b>	<b>83.1%</b>	<b>10</b>	<b>16.9%</b>
<b>L Motoring Offences</b>	<b>460</b>	<b>95.0%</b>	<b>24</b>	<b>5.0%</b>
<b>Admin Finalisations</b>	<b>0</b>	<b>0.0%</b>	<b>4</b>	<b>100.0%</b>
<b>TOTAL</b>	<b>1,429</b>	<b>87.8%</b>	<b>199</b>	<b>12.2%</b>