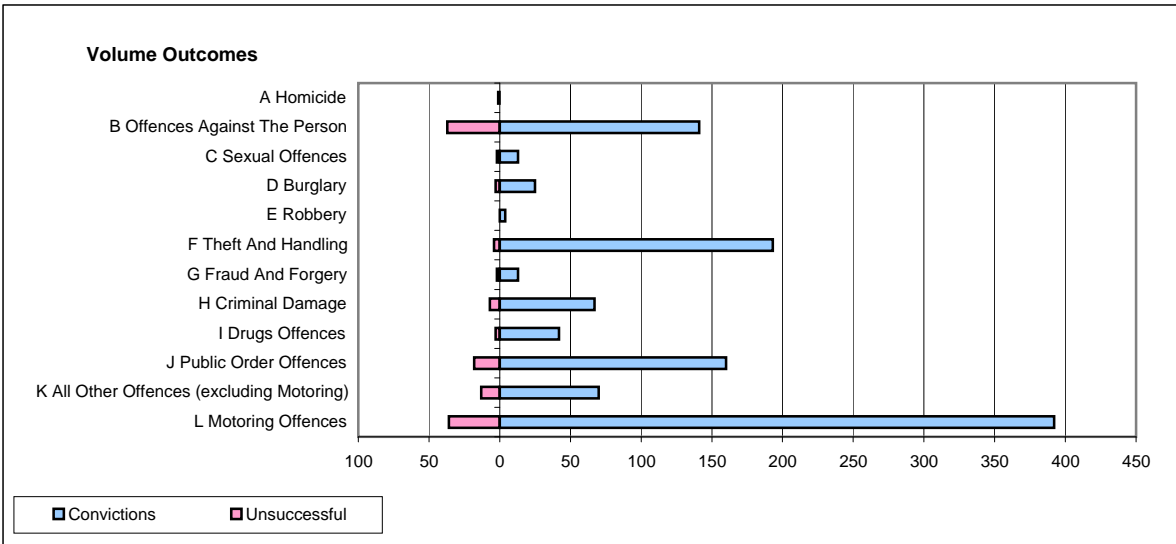
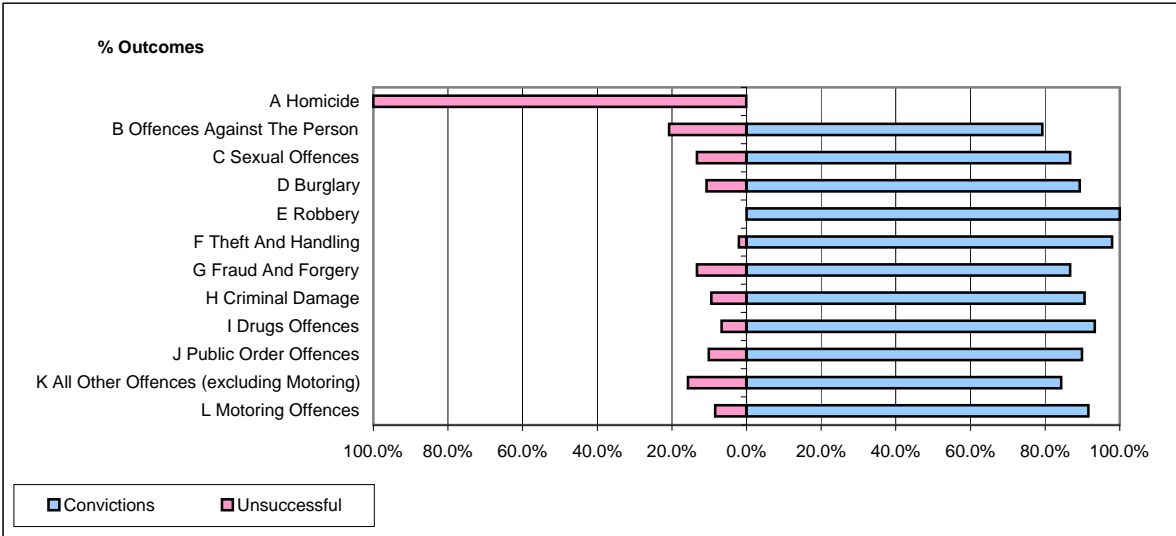


**CPS OUTCOMES BY PRINCIPAL OFFENCE CATEGORY**

**March 2009**

**P29-NorthWales**



	Convictions		Unsuccessful	
	Number of Defendants	%	Number of Defendants	%
<b>A Homicide</b>	<b>0</b>	<b>0.0%</b>	<b>1</b>	<b>100.0%</b>
<b>B Offences Against The Person</b>	<b>141</b>	<b>79.2%</b>	<b>37</b>	<b>20.8%</b>
<b>C Sexual Offences</b>	<b>13</b>	<b>86.7%</b>	<b>2</b>	<b>13.3%</b>
<b>D Burglary</b>	<b>25</b>	<b>89.3%</b>	<b>3</b>	<b>10.7%</b>
<b>E Robbery</b>	<b>4</b>	<b>100.0%</b>	<b>0</b>	<b>0.0%</b>
<b>F Theft And Handling</b>	<b>193</b>	<b>98.0%</b>	<b>4</b>	<b>2.0%</b>
<b>G Fraud And Forgery</b>	<b>13</b>	<b>86.7%</b>	<b>2</b>	<b>13.3%</b>
<b>H Criminal Damage</b>	<b>67</b>	<b>90.5%</b>	<b>7</b>	<b>9.5%</b>
<b>I Drugs Offences</b>	<b>42</b>	<b>93.3%</b>	<b>3</b>	<b>6.7%</b>
<b>J Public Order Offences</b>	<b>160</b>	<b>89.9%</b>	<b>18</b>	<b>10.1%</b>
<b>K All Other Offences (excluding Motoring)</b>	<b>70</b>	<b>84.3%</b>	<b>13</b>	<b>15.7%</b>
<b>L Motoring Offences</b>	<b>392</b>	<b>91.6%</b>	<b>36</b>	<b>8.4%</b>
<b>Admin Finalisations</b>	<b>0</b>	<b>0.0%</b>	<b>4</b>	<b>100.0%</b>
<b>TOTAL</b>	<b>1,120</b>	<b>89.6%</b>	<b>130</b>	<b>10.4%</b>