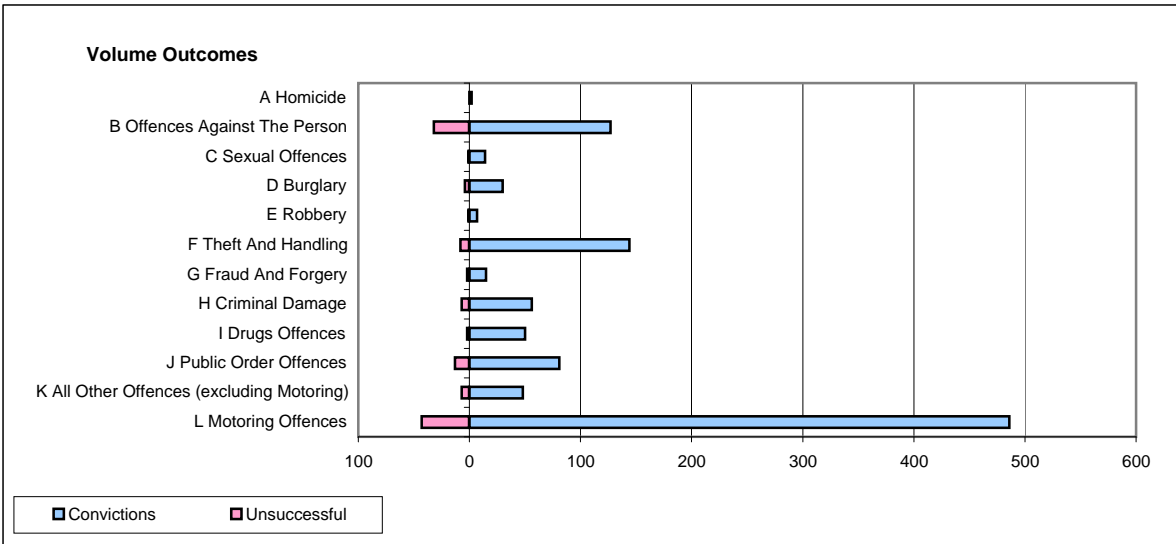
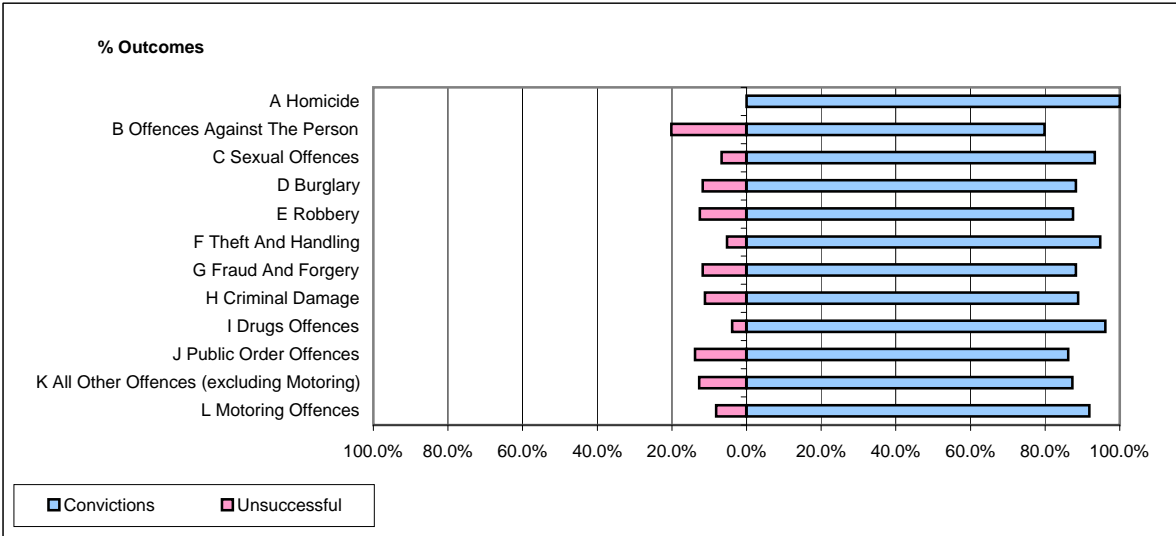


CPS OUTCOMES BY PRINCIPAL OFFENCE CATEGORY

March 2009

P26-Norfolk



	Convictions		Unsuccessful	
	Number of Defendants	%	Number of Defendants	%
A Homicide	2	100.0%	0	0.0%
B Offences Against The Person	127	79.9%	32	20.1%
C Sexual Offences	14	93.3%	1	6.7%
D Burglary	30	88.2%	4	11.8%
E Robbery	7	87.5%	1	12.5%
F Theft And Handling	144	94.7%	8	5.3%
G Fraud And Forgery	15	88.2%	2	11.8%
H Criminal Damage	56	88.9%	7	11.1%
I Drugs Offences	50	96.2%	2	3.8%
J Public Order Offences	81	86.2%	13	13.8%
K All Other Offences (excluding Motoring)	48	87.3%	7	12.7%
L Motoring Offences	486	91.9%	43	8.1%
Admin Finalisations	0	0.0%	8	100.0%
TOTAL	1,060	89.2%	128	10.8%