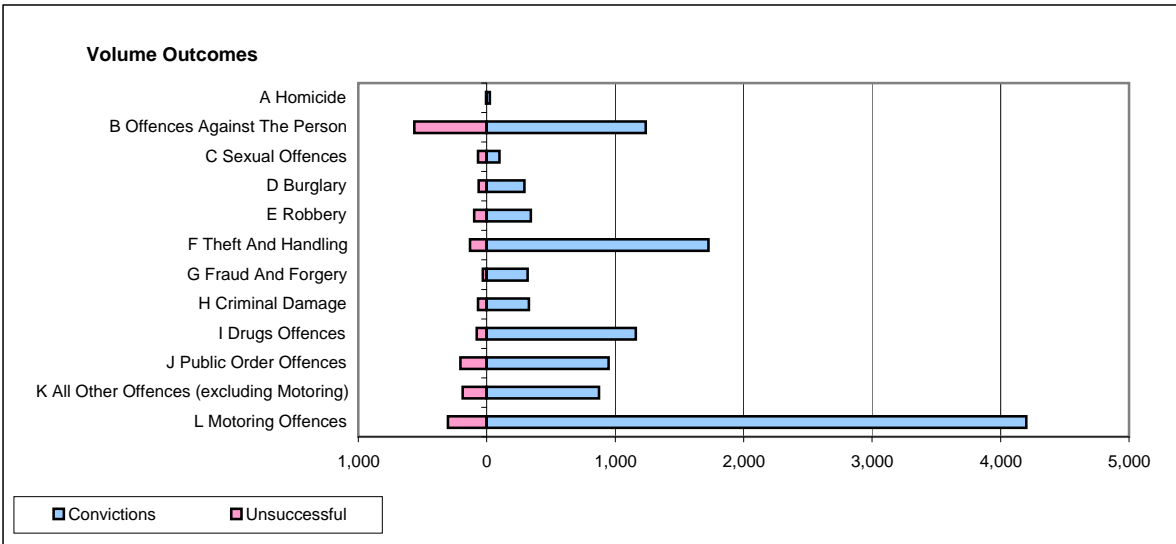
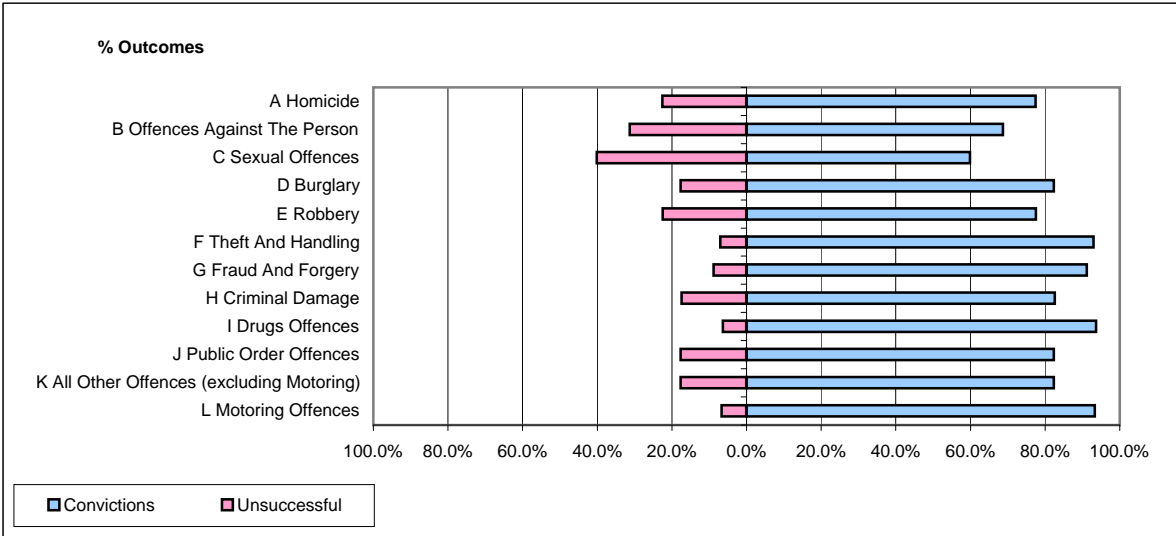


CPS OUTCOMES BY PRINCIPAL OFFENCE CATEGORY

March 2009

P25-Metropolitan&City



	Convictions		Unsuccessful	
	Number of Defendants	%	Number of Defendants	%
A Homicide	24	77.4%	7	22.6%
B Offences Against The Person	1,238	68.7%	565	31.3%
C Sexual Offences	100	59.9%	67	40.1%
D Burglary	294	82.4%	63	17.6%
E Robbery	342	77.6%	99	22.4%
F Theft And Handling	1,727	92.9%	131	7.1%
G Fraud And Forgery	319	91.1%	31	8.9%
H Criminal Damage	328	82.6%	69	17.4%
I Drugs Offences	1,161	93.6%	79	6.4%
J Public Order Offences	949	82.3%	204	17.7%
K All Other Offences (excluding Motoring)	874	82.3%	188	17.7%
L Motoring Offences	4,201	93.3%	302	6.7%
Admin Finalisations	0	0.0%	331	100.0%
TOTAL	11,557	84.4%	2,136	15.6%