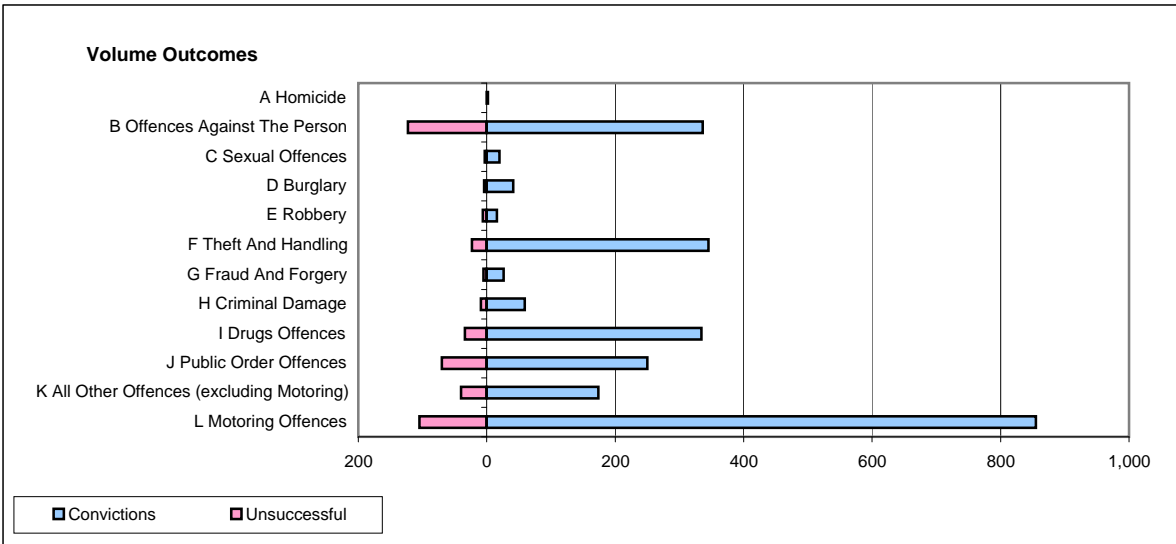
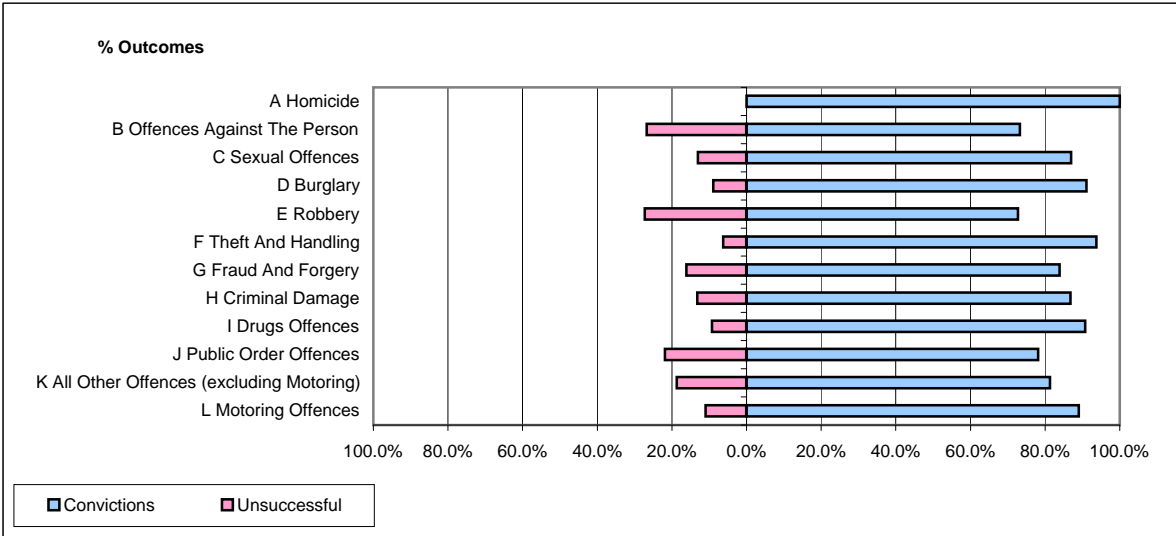


CPS OUTCOMES BY PRINCIPAL OFFENCE CATEGORY

March 2009

P24-Merseyside



	Convictions		Unsuccessful	
	Number of Defendants	%	Number of Defendants	%
A Homicide	2	100.0%	0	0.0%
B Offences Against The Person	336	73.2%	123	26.8%
C Sexual Offences	20	87.0%	3	13.0%
D Burglary	41	91.1%	4	8.9%
E Robbery	16	72.7%	6	27.3%
F Theft And Handling	345	93.8%	23	6.3%
G Fraud And Forgery	26	83.9%	5	16.1%
H Criminal Damage	59	86.8%	9	13.2%
I Drugs Offences	334	90.8%	34	9.2%
J Public Order Offences	250	78.1%	70	21.9%
K All Other Offences (excluding Motoring)	174	81.3%	40	18.7%
L Motoring Offences	855	89.1%	105	10.9%
Admin Finalisations	0	0.0%	22	100.0%
TOTAL	2,458	84.7%	444	15.3%