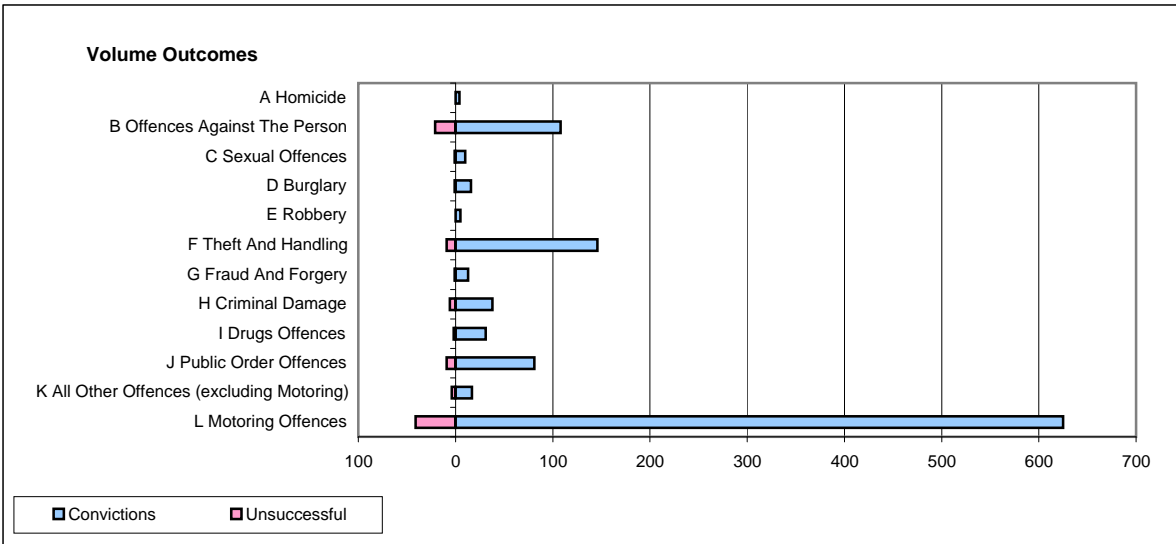
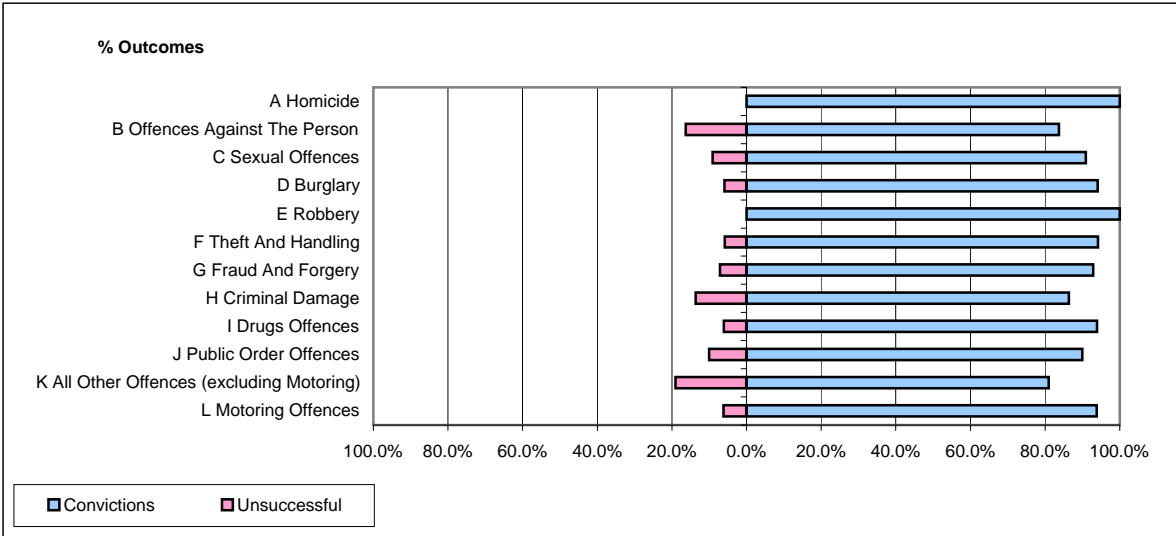


CPS OUTCOMES BY PRINCIPAL OFFENCE CATEGORY

March 2009

P23-Lincolnshire



	Convictions		Unsuccessful	
	Number of Defendants	%	Number of Defendants	%
A Homicide	4	100.0%	0	0.0%
B Offences Against The Person	108	83.7%	21	16.3%
C Sexual Offences	10	90.9%	1	9.1%
D Burglary	16	94.1%	1	5.9%
E Robbery	5	100.0%	0	0.0%
F Theft And Handling	146	94.2%	9	5.8%
G Fraud And Forgery	13	92.9%	1	7.1%
H Criminal Damage	38	86.4%	6	13.6%
I Drugs Offences	31	93.9%	2	6.1%
J Public Order Offences	81	90.0%	9	10.0%
K All Other Offences (excluding Motoring)	17	81.0%	4	19.0%
L Motoring Offences	625	93.8%	41	6.2%
Admin Finalisations	0	0.0%	4	100.0%
TOTAL	1,094	91.7%	99	8.3%