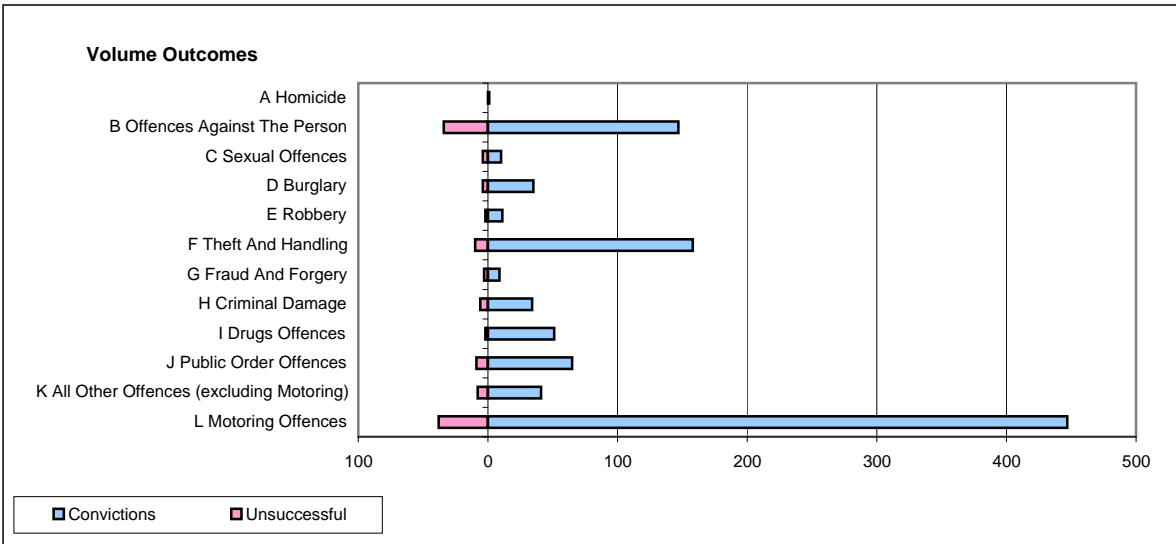
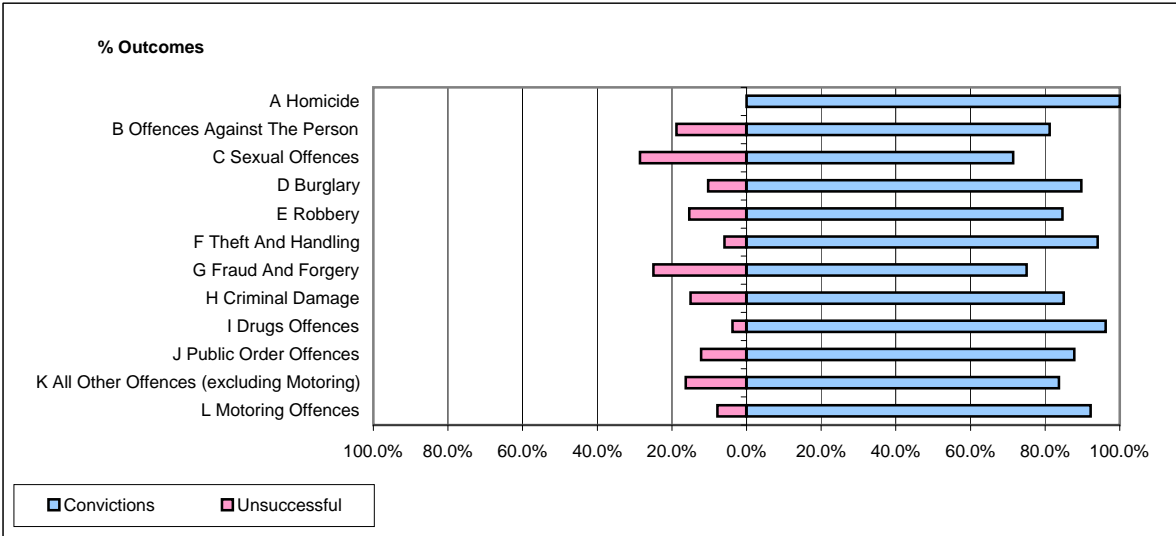


CPS OUTCOMES BY PRINCIPAL OFFENCE CATEGORY

March 2009

P22-Leicestershire



	Convictions		Unsuccessful	
	Number of Defendants	%	Number of Defendants	%
A Homicide	1	100.0%	0	0.0%
B Offences Against The Person	147	81.2%	34	18.8%
C Sexual Offences	10	71.4%	4	28.6%
D Burglary	35	89.7%	4	10.3%
E Robbery	11	84.6%	2	15.4%
F Theft And Handling	158	94.0%	10	6.0%
G Fraud And Forgery	9	75.0%	3	25.0%
H Criminal Damage	34	85.0%	6	15.0%
I Drugs Offences	51	96.2%	2	3.8%
J Public Order Offences	65	87.8%	9	12.2%
K All Other Offences (excluding Motoring)	41	83.7%	8	16.3%
L Motoring Offences	447	92.2%	38	7.8%
Admin Finalisations	0	0.0%	14	100.0%
TOTAL	1,009	88.3%	134	11.7%