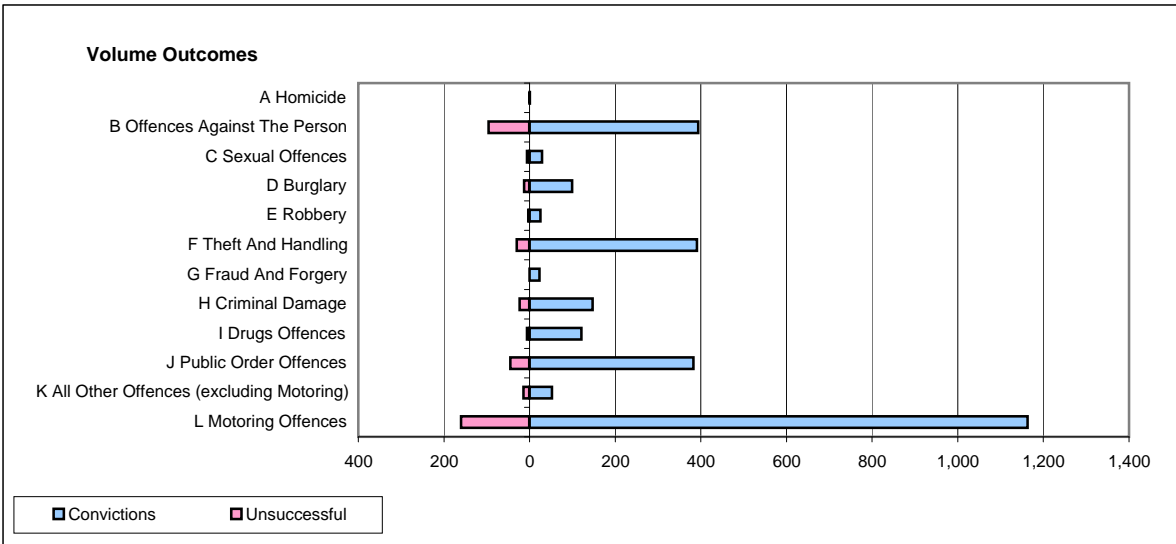
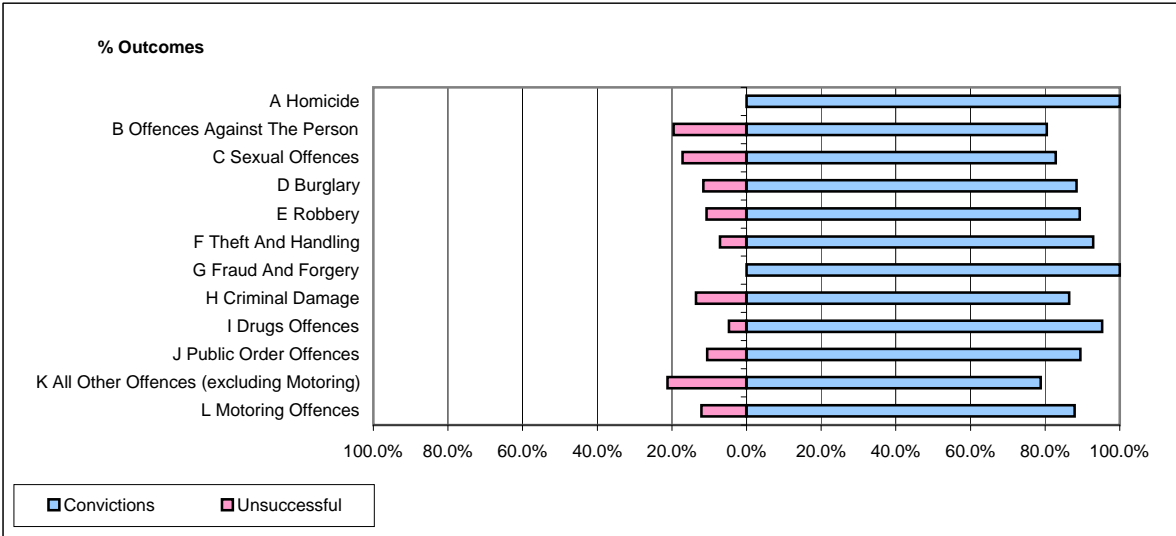


CPS OUTCOMES BY PRINCIPAL OFFENCE CATEGORY

March 2009

P21-Lancashire



	Convictions		Unsuccessful	
	Number of Defendants	%	Number of Defendants	%
A Homicide	1	100.0%	0	0.0%
B Offences Against The Person	394	80.4%	96	19.6%
C Sexual Offences	29	82.9%	6	17.1%
D Burglary	99	88.4%	13	11.6%
E Robbery	25	89.3%	3	10.7%
F Theft And Handling	391	92.9%	30	7.1%
G Fraud And Forgery	23	100.0%	0	0.0%
H Criminal Damage	147	86.5%	23	13.5%
I Drugs Offences	121	95.3%	6	4.7%
J Public Order Offences	383	89.5%	45	10.5%
K All Other Offences (excluding Motoring)	52	78.8%	14	21.2%
L Motoring Offences	1,163	87.9%	160	12.1%
Admin Finalisations	0	0.0%	29	100.0%
TOTAL	2,828	86.9%	425	13.1%