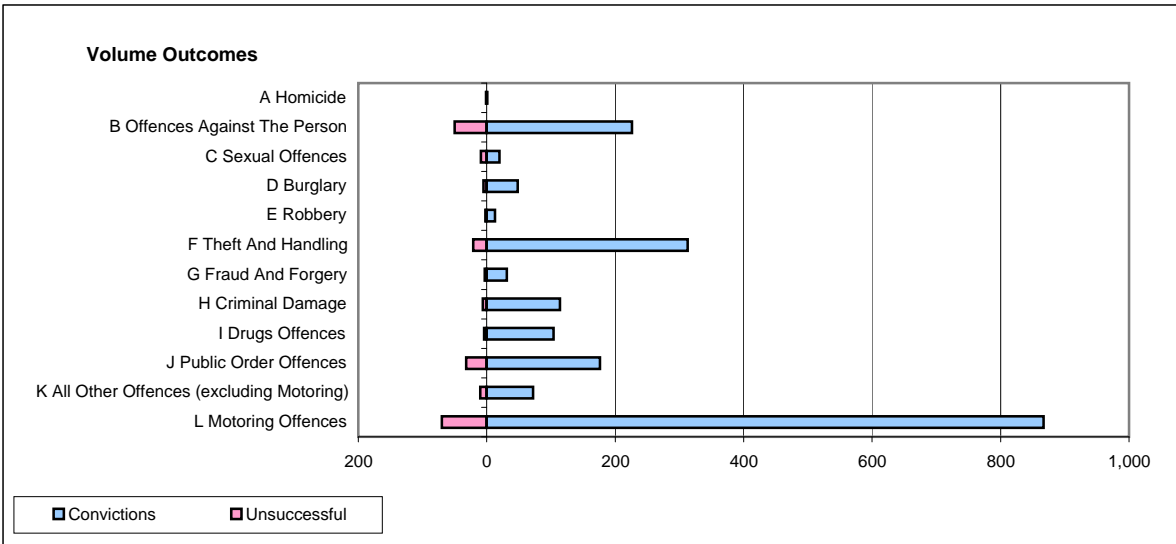
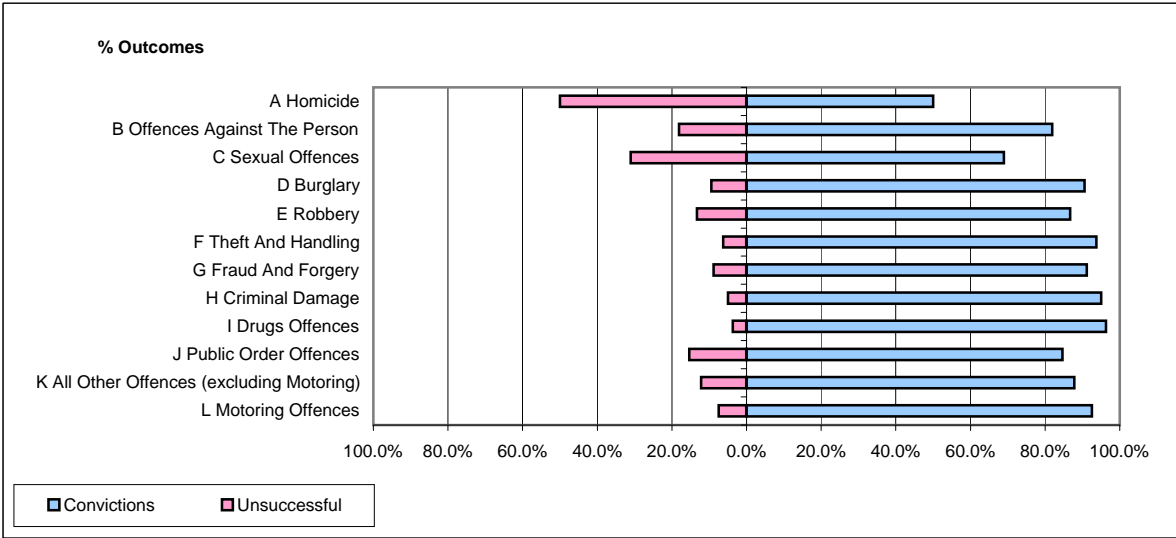


CPS OUTCOMES BY PRINCIPAL OFFENCE CATEGORY

March 2009

P20-Kent



	Convictions		Unsuccessful	
	Number of Defendants	%	Number of Defendants	%
A Homicide	1	50.0%	1	50.0%
B Offences Against The Person	226	81.9%	50	18.1%
C Sexual Offences	20	69.0%	9	31.0%
D Burglary	48	90.6%	5	9.4%
E Robbery	13	86.7%	2	13.3%
F Theft And Handling	313	93.7%	21	6.3%
G Fraud And Forgery	31	91.2%	3	8.8%
H Criminal Damage	114	95.0%	6	5.0%
I Drugs Offences	104	96.3%	4	3.7%
J Public Order Offences	176	84.6%	32	15.4%
K All Other Offences (excluding Motoring)	72	87.8%	10	12.2%
L Motoring Offences	867	92.5%	70	7.5%
Admin Finalisations	0	0.0%	16	100.0%
TOTAL	1,985	89.7%	229	10.3%