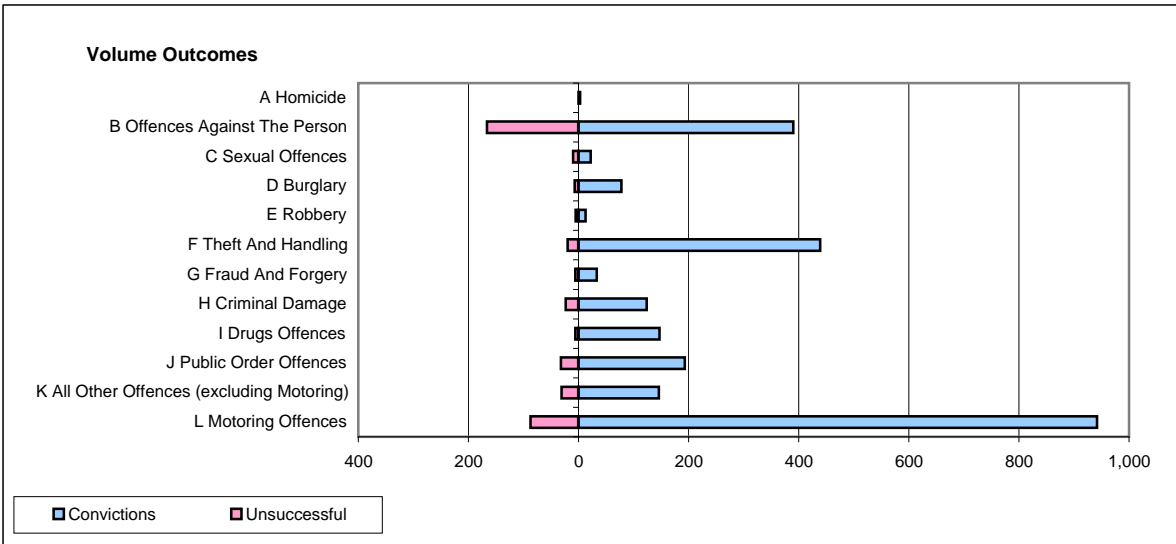
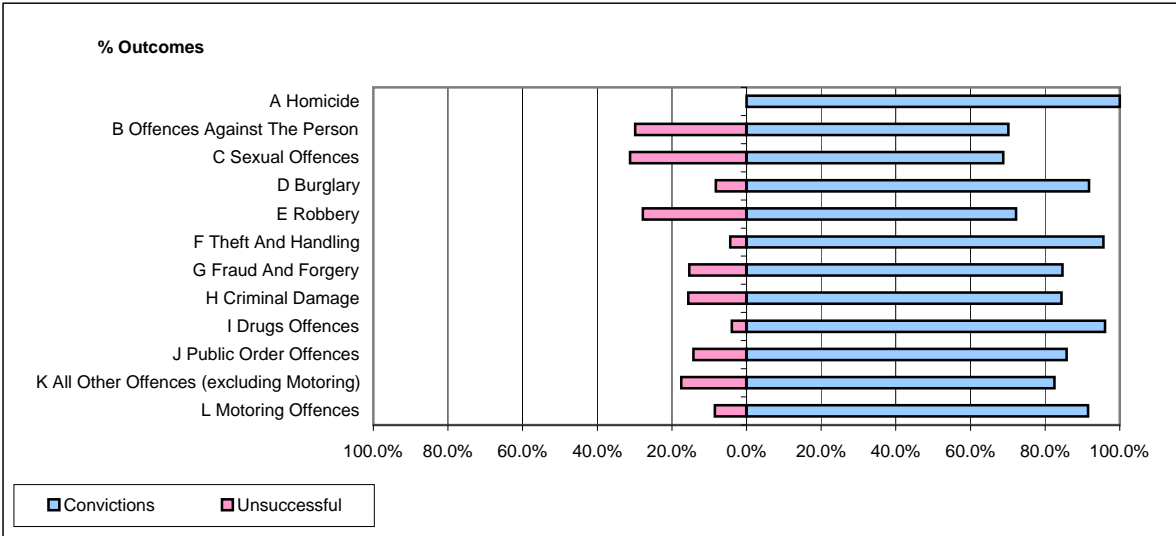


**CPS OUTCOMES BY PRINCIPAL OFFENCE CATEGORY**

**March 2009**

**P17-Hampshire**



	Convictions		Unsuccessful	
	Number of Defendants	%	Number of Defendants	%
<b>A Homicide</b>	<b>3</b>	<b>100.0%</b>	<b>0</b>	<b>0.0%</b>
<b>B Offences Against The Person</b>	<b>390</b>	<b>70.1%</b>	<b>166</b>	<b>29.9%</b>
<b>C Sexual Offences</b>	<b>22</b>	<b>68.8%</b>	<b>10</b>	<b>31.3%</b>
<b>D Burglary</b>	<b>78</b>	<b>91.8%</b>	<b>7</b>	<b>8.2%</b>
<b>E Robbery</b>	<b>13</b>	<b>72.2%</b>	<b>5</b>	<b>27.8%</b>
<b>F Theft And Handling</b>	<b>439</b>	<b>95.6%</b>	<b>20</b>	<b>4.4%</b>
<b>G Fraud And Forgery</b>	<b>33</b>	<b>84.6%</b>	<b>6</b>	<b>15.4%</b>
<b>H Criminal Damage</b>	<b>124</b>	<b>84.4%</b>	<b>23</b>	<b>15.6%</b>
<b>I Drugs Offences</b>	<b>147</b>	<b>96.1%</b>	<b>6</b>	<b>3.9%</b>
<b>J Public Order Offences</b>	<b>193</b>	<b>85.8%</b>	<b>32</b>	<b>14.2%</b>
<b>K All Other Offences (excluding Motoring)</b>	<b>146</b>	<b>82.5%</b>	<b>31</b>	<b>17.5%</b>
<b>L Motoring Offences</b>	<b>942</b>	<b>91.5%</b>	<b>87</b>	<b>8.5%</b>
<b>Admin Finalisations</b>	<b>0</b>	<b>0.0%</b>	<b>24</b>	<b>100.0%</b>
<b>TOTAL</b>	<b>2,530</b>	<b>85.9%</b>	<b>417</b>	<b>14.1%</b>