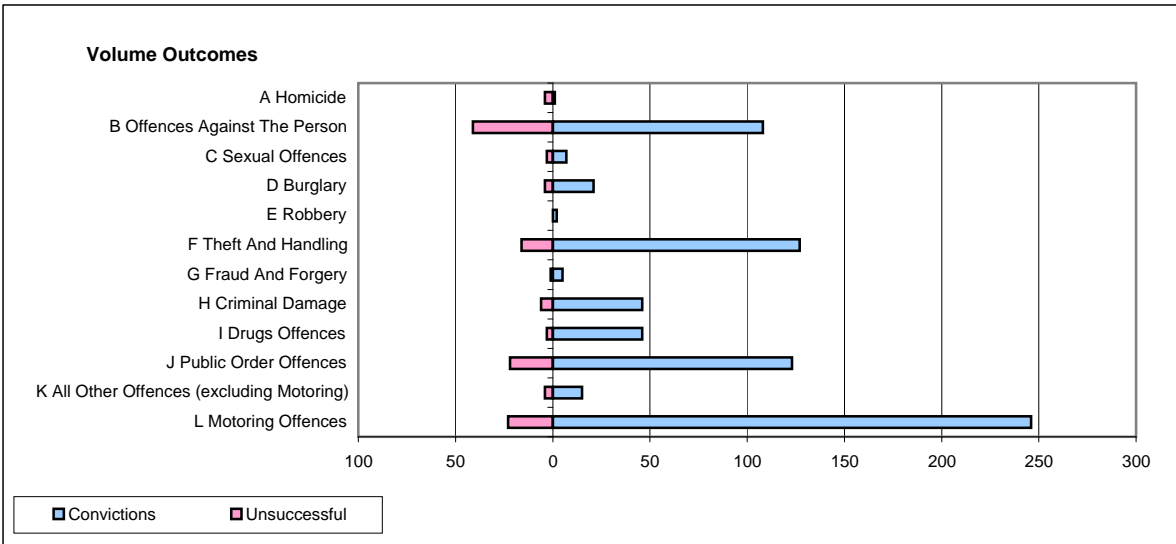
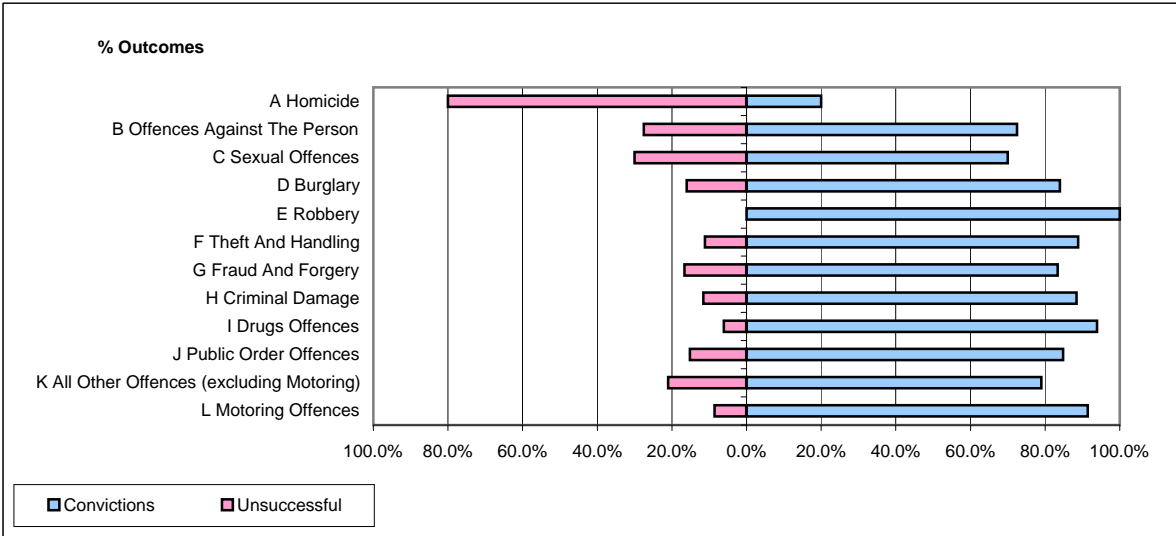


CPS OUTCOMES BY PRINCIPAL OFFENCE CATEGORY

March 2009

P16-Gwent



	Convictions		Unsuccessful	
	Number of Defendants	%	Number of Defendants	%
A Homicide	1	20.0%	4	80.0%
B Offences Against The Person	108	72.5%	41	27.5%
C Sexual Offences	7	70.0%	3	30.0%
D Burglary	21	84.0%	4	16.0%
E Robbery	2	100.0%	0	0.0%
F Theft And Handling	127	88.8%	16	11.2%
G Fraud And Forgery	5	83.3%	1	16.7%
H Criminal Damage	46	88.5%	6	11.5%
I Drugs Offences	46	93.9%	3	6.1%
J Public Order Offences	123	84.8%	22	15.2%
K All Other Offences (excluding Motoring)	15	78.9%	4	21.1%
L Motoring Offences	246	91.4%	23	8.6%
Admin Finalisations	0	0.0%	5	100.0%
TOTAL	747	85.0%	132	15.0%