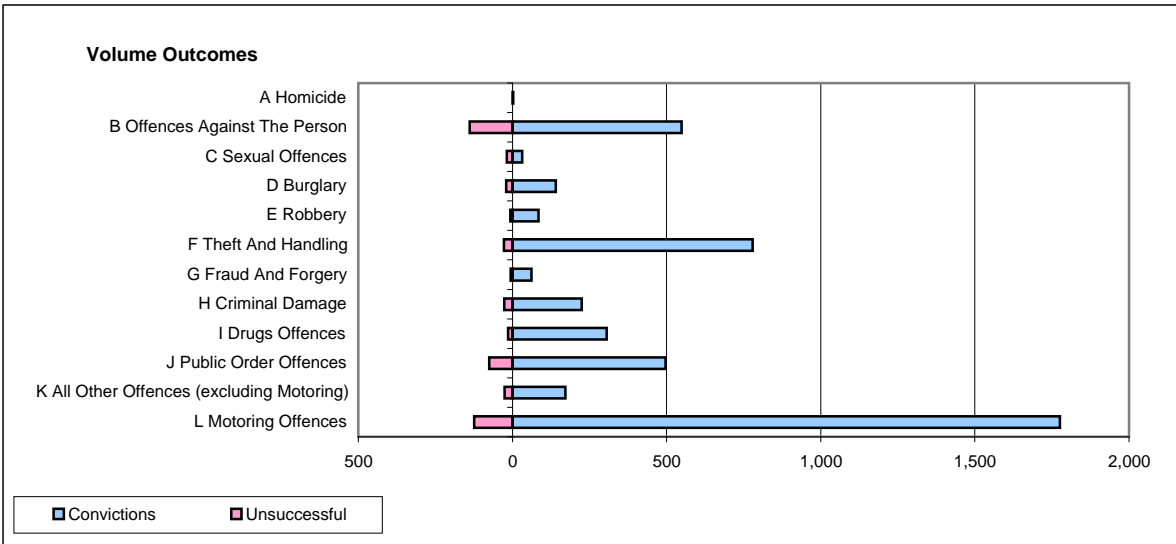
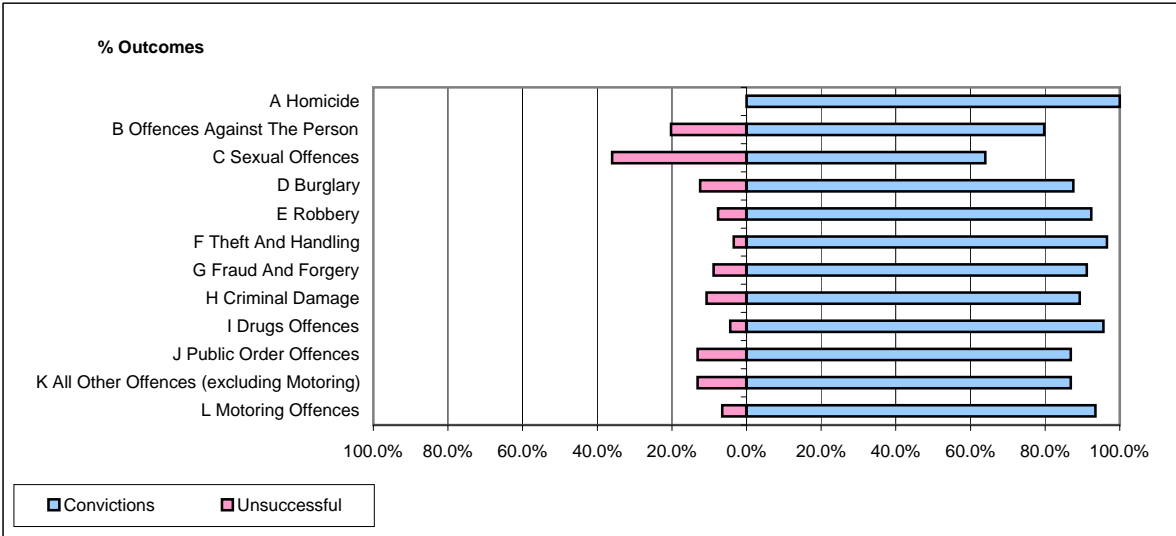


CPS OUTCOMES BY PRINCIPAL OFFENCE CATEGORY

March 2009

P15-GreaterManchester



	Convictions		Unsuccessful	
	Number of Defendants	%	Number of Defendants	%
A Homicide	2	100.0%	0	0.0%
B Offences Against The Person	549	79.8%	139	20.2%
C Sexual Offences	32	64.0%	18	36.0%
D Burglary	141	87.6%	20	12.4%
E Robbery	85	92.4%	7	7.6%
F Theft And Handling	779	96.5%	28	3.5%
G Fraud And Forgery	62	91.2%	6	8.8%
H Criminal Damage	225	89.3%	27	10.7%
I Drugs Offences	306	95.6%	14	4.4%
J Public Order Offences	497	86.9%	75	13.1%
K All Other Offences (excluding Motoring)	172	86.9%	26	13.1%
L Motoring Offences	1,776	93.5%	124	6.5%
Admin Finalisations	0	0.0%	42	100.0%
TOTAL	4,626	89.8%	526	10.2%