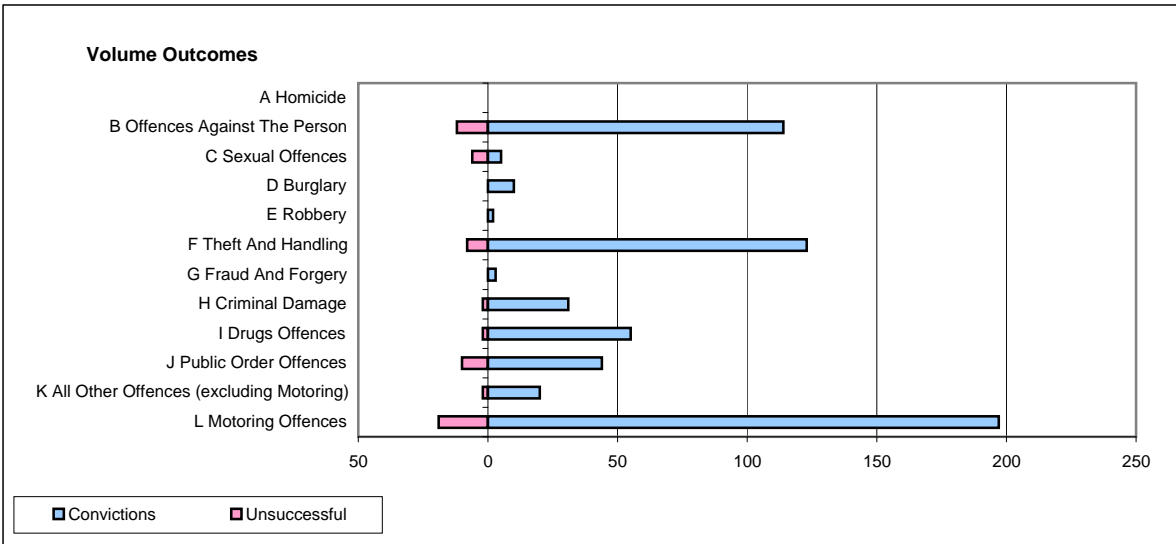
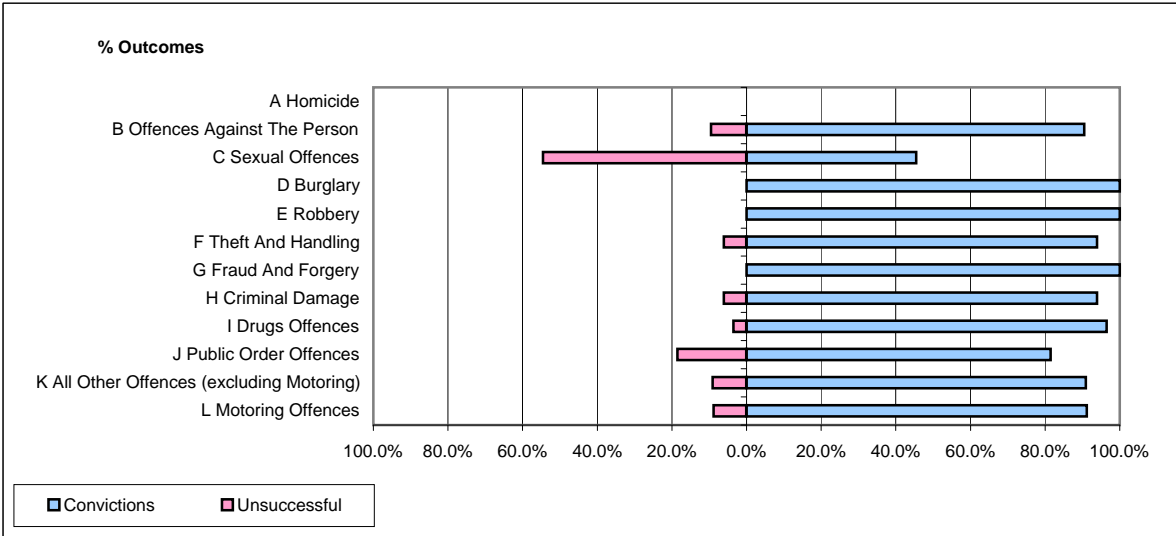


CPS OUTCOMES BY PRINCIPAL OFFENCE CATEGORY

March 2009

P14-Gloucestershire



	Convictions		Unsuccessful	
	Number of Defendants	%	Number of Defendants	%
A Homicide	0	0	0	0
B Offences Against The Person	114	90.5%	12	9.5%
C Sexual Offences	5	45.5%	6	54.5%
D Burglary	10	100.0%	0	0.0%
E Robbery	2	100.0%	0	0.0%
F Theft And Handling	123	93.9%	8	6.1%
G Fraud And Forgery	3	100.0%	0	0.0%
H Criminal Damage	31	93.9%	2	6.1%
I Drugs Offences	55	96.5%	2	3.5%
J Public Order Offences	44	81.5%	10	18.5%
K All Other Offences (excluding Motoring)	20	90.9%	2	9.1%
L Motoring Offences	197	91.2%	19	8.8%
Admin Finalisations	0	0.0%	6	100.0%
TOTAL	604	90.0%	67	10.0%