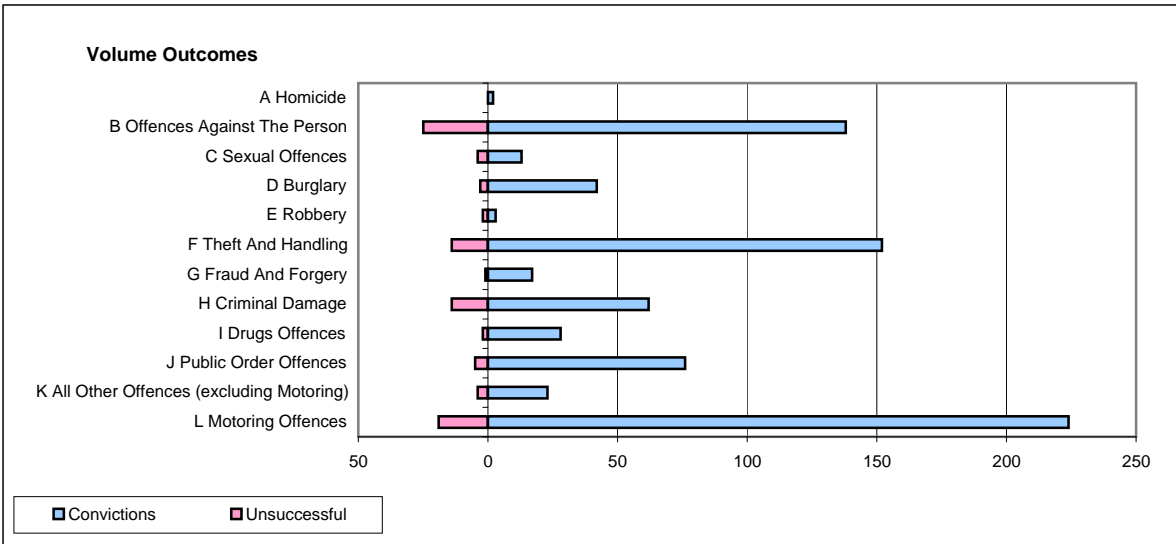
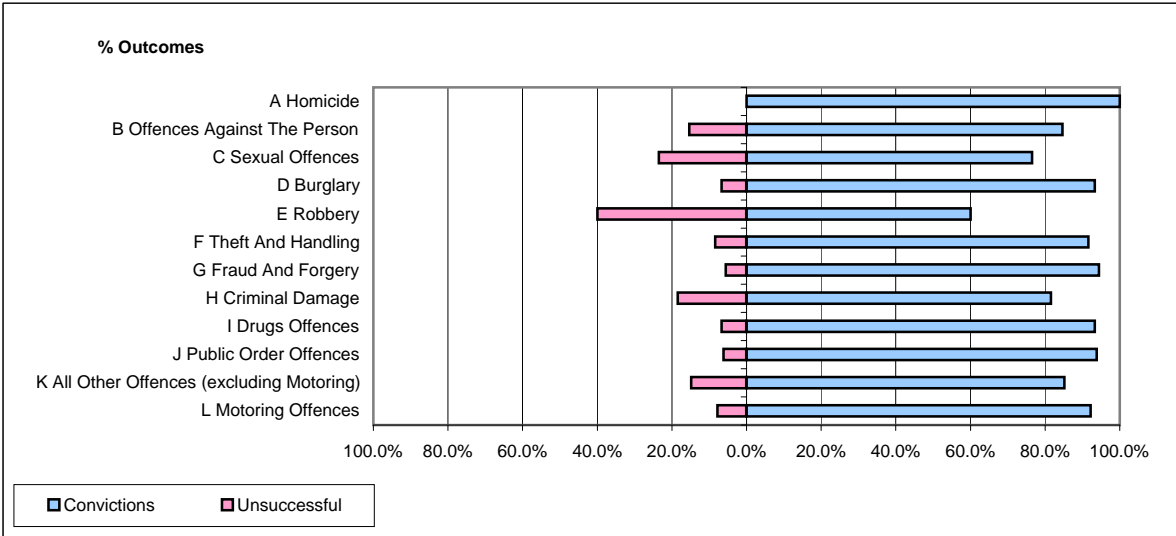


CPS OUTCOMES BY PRINCIPAL OFFENCE CATEGORY

March 2009

P11-Durham



	Convictions		Unsuccessful	
	Number of Defendants	%	Number of Defendants	%
A Homicide	2	100.0%	0	0.0%
B Offences Against The Person	138	84.7%	25	15.3%
C Sexual Offences	13	76.5%	4	23.5%
D Burglary	42	93.3%	3	6.7%
E Robbery	3	60.0%	2	40.0%
F Theft And Handling	152	91.6%	14	8.4%
G Fraud And Forgery	17	94.4%	1	5.6%
H Criminal Damage	62	81.6%	14	18.4%
I Drugs Offences	28	93.3%	2	6.7%
J Public Order Offences	76	93.8%	5	6.2%
K All Other Offences (excluding Motoring)	23	85.2%	4	14.8%
L Motoring Offences	224	92.2%	19	7.8%
Admin Finalisations	0	0.0%	6	100.0%
TOTAL	780	88.7%	99	11.3%