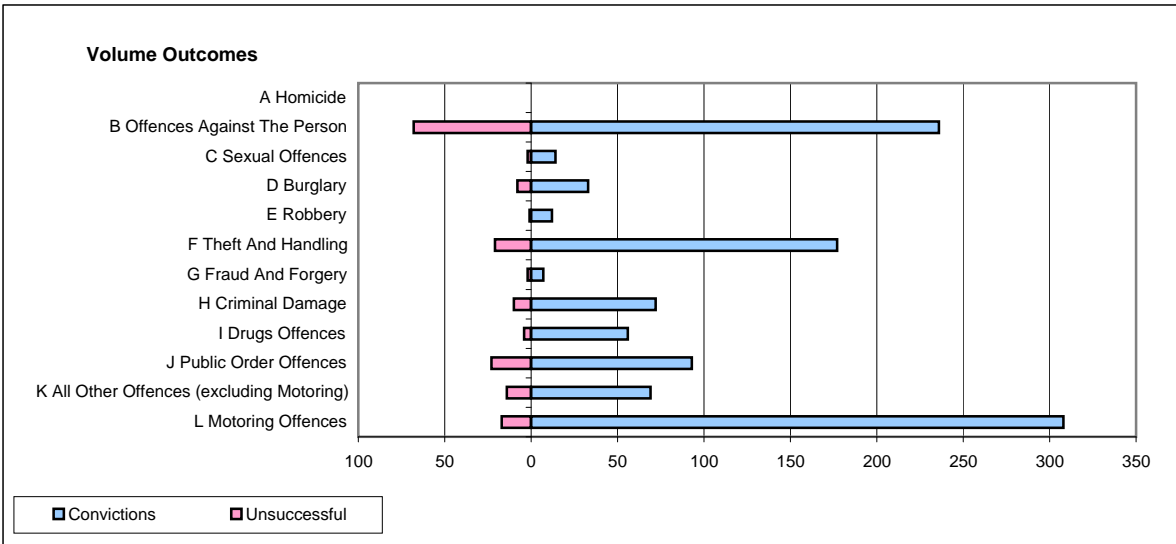
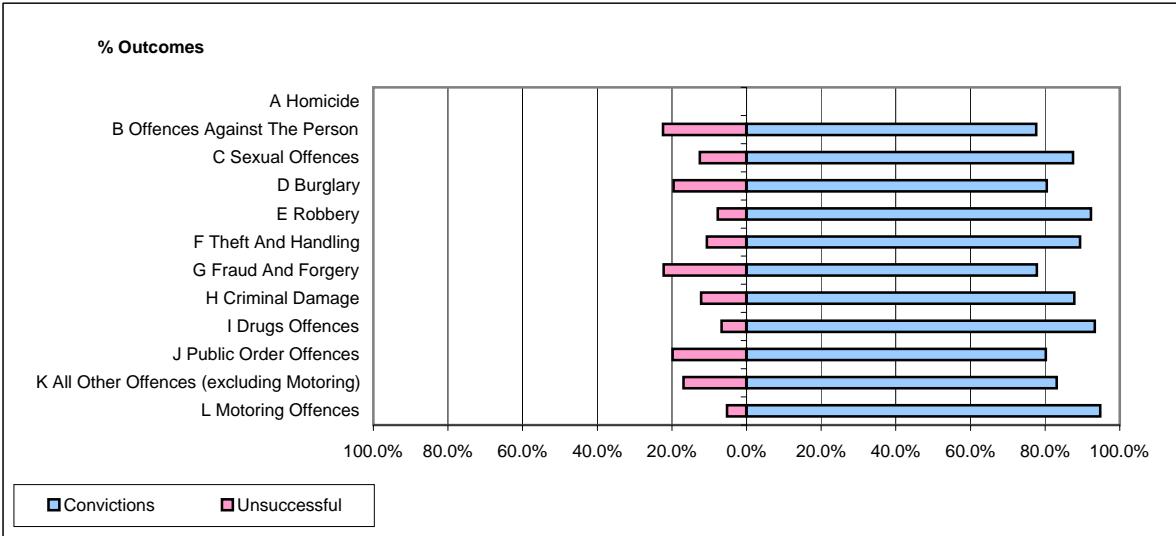


**CPS OUTCOMES BY PRINCIPAL OFFENCE CATEGORY**

**March 2009**

**P08-Derbyshire**



	Convictions		Unsuccessful	
	Number of Defendants	%	Number of Defendants	%
<b>A Homicide</b>	<b>0</b>	<b>0</b>	<b>0</b>	<b>0</b>
<b>B Offences Against The Person</b>	<b>236</b>	<b>77.6%</b>	<b>68</b>	<b>22.4%</b>
<b>C Sexual Offences</b>	<b>14</b>	<b>87.5%</b>	<b>2</b>	<b>12.5%</b>
<b>D Burglary</b>	<b>33</b>	<b>80.5%</b>	<b>8</b>	<b>19.5%</b>
<b>E Robbery</b>	<b>12</b>	<b>92.3%</b>	<b>1</b>	<b>7.7%</b>
<b>F Theft And Handling</b>	<b>177</b>	<b>89.4%</b>	<b>21</b>	<b>10.6%</b>
<b>G Fraud And Forgery</b>	<b>7</b>	<b>77.8%</b>	<b>2</b>	<b>22.2%</b>
<b>H Criminal Damage</b>	<b>72</b>	<b>87.8%</b>	<b>10</b>	<b>12.2%</b>
<b>I Drugs Offences</b>	<b>56</b>	<b>93.3%</b>	<b>4</b>	<b>6.7%</b>
<b>J Public Order Offences</b>	<b>93</b>	<b>80.2%</b>	<b>23</b>	<b>19.8%</b>
<b>K All Other Offences (excluding Motoring)</b>	<b>69</b>	<b>83.1%</b>	<b>14</b>	<b>16.9%</b>
<b>L Motoring Offences</b>	<b>308</b>	<b>94.8%</b>	<b>17</b>	<b>5.2%</b>
<b>Admin Finalisations</b>	<b>0</b>	<b>0.0%</b>	<b>11</b>	<b>100.0%</b>
<b>TOTAL</b>	<b>1,077</b>	<b>85.6%</b>	<b>181</b>	<b>14.4%</b>