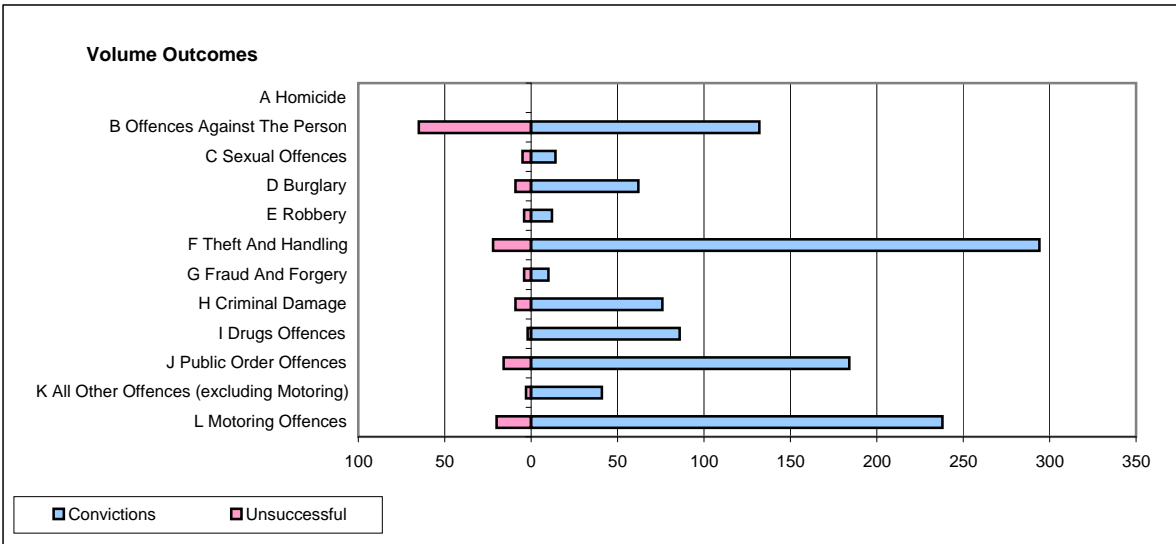
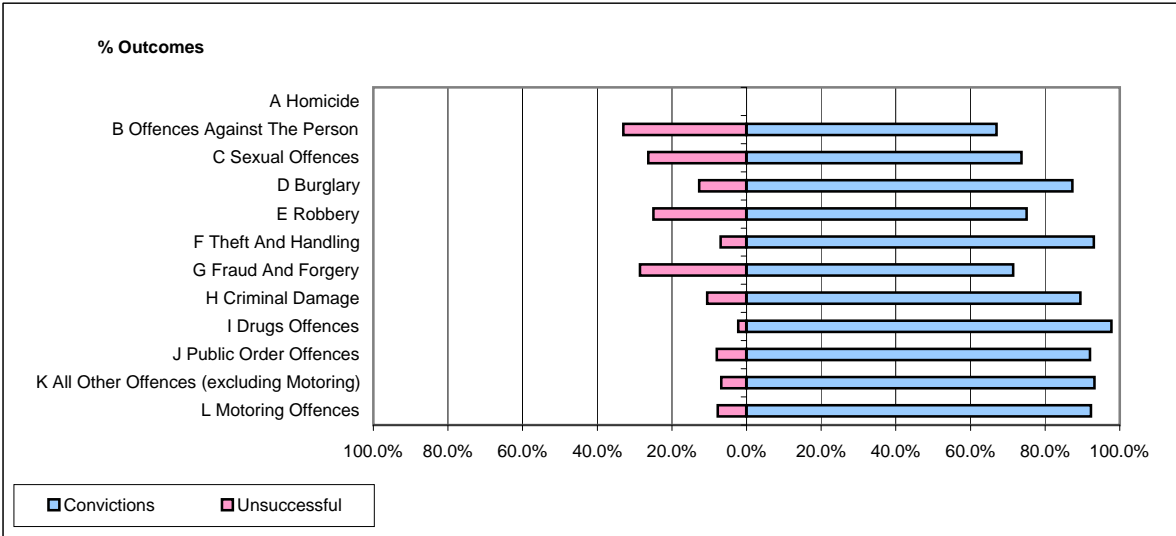


**CPS OUTCOMES BY PRINCIPAL OFFENCE CATEGORY**

**March 2009**

**P06-Cleveland**



	Convictions		Unsuccessful	
	Number of Defendants	%	Number of Defendants	%
<b>A Homicide</b>	<b>0</b>	<b>0</b>	<b>0</b>	<b>0</b>
<b>B Offences Against The Person</b>	<b>132</b>	<b>67.0%</b>	<b>65</b>	<b>33.0%</b>
<b>C Sexual Offences</b>	<b>14</b>	<b>73.7%</b>	<b>5</b>	<b>26.3%</b>
<b>D Burglary</b>	<b>62</b>	<b>87.3%</b>	<b>9</b>	<b>12.7%</b>
<b>E Robbery</b>	<b>12</b>	<b>75.0%</b>	<b>4</b>	<b>25.0%</b>
<b>F Theft And Handling</b>	<b>294</b>	<b>93.0%</b>	<b>22</b>	<b>7.0%</b>
<b>G Fraud And Forgery</b>	<b>10</b>	<b>71.4%</b>	<b>4</b>	<b>28.6%</b>
<b>H Criminal Damage</b>	<b>76</b>	<b>89.4%</b>	<b>9</b>	<b>10.6%</b>
<b>I Drugs Offences</b>	<b>86</b>	<b>97.7%</b>	<b>2</b>	<b>2.3%</b>
<b>J Public Order Offences</b>	<b>184</b>	<b>92.0%</b>	<b>16</b>	<b>8.0%</b>
<b>K All Other Offences (excluding Motoring)</b>	<b>41</b>	<b>93.2%</b>	<b>3</b>	<b>6.8%</b>
<b>L Motoring Offences</b>	<b>238</b>	<b>92.2%</b>	<b>20</b>	<b>7.8%</b>
<b>Admin Finalisations</b>	<b>0</b>	<b>0.0%</b>	<b>4</b>	<b>100.0%</b>
<b>TOTAL</b>	<b>1,149</b>	<b>87.6%</b>	<b>163</b>	<b>12.4%</b>