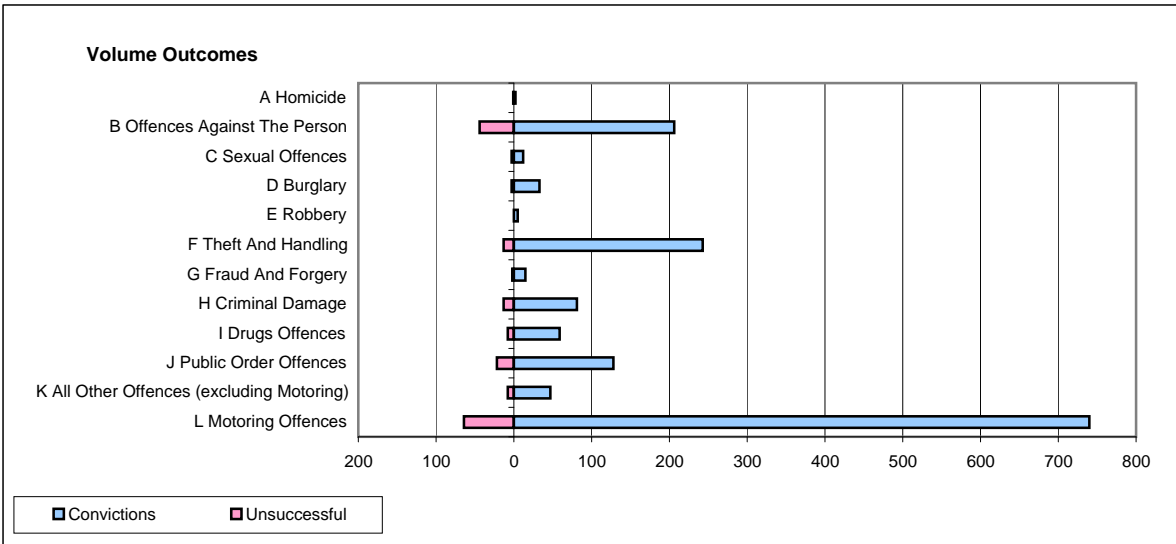
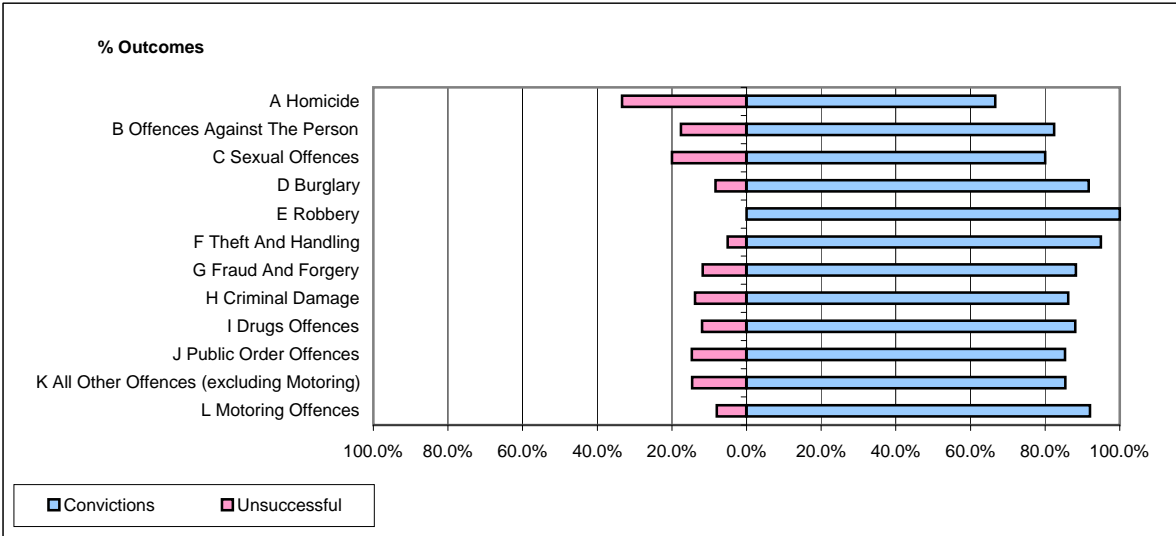


CPS OUTCOMES BY PRINCIPAL OFFENCE CATEGORY

March 2009

P04-Cheshire



	Convictions		Unsuccessful	
	Number of Defendants	%	Number of Defendants	%
A Homicide	2	66.7%	1	33.3%
B Offences Against The Person	206	82.4%	44	17.6%
C Sexual Offences	12	80.0%	3	20.0%
D Burglary	33	91.7%	3	8.3%
E Robbery	5	100.0%	0	0.0%
F Theft And Handling	243	94.9%	13	5.1%
G Fraud And Forgery	15	88.2%	2	11.8%
H Criminal Damage	81	86.2%	13	13.8%
I Drugs Offences	59	88.1%	8	11.9%
J Public Order Offences	128	85.3%	22	14.7%
K All Other Offences (excluding Motoring)	47	85.5%	8	14.5%
L Motoring Offences	740	92.0%	64	8.0%
Admin Finalisations	0	0.0%	9	100.0%
TOTAL	1,571	89.2%	190	10.8%