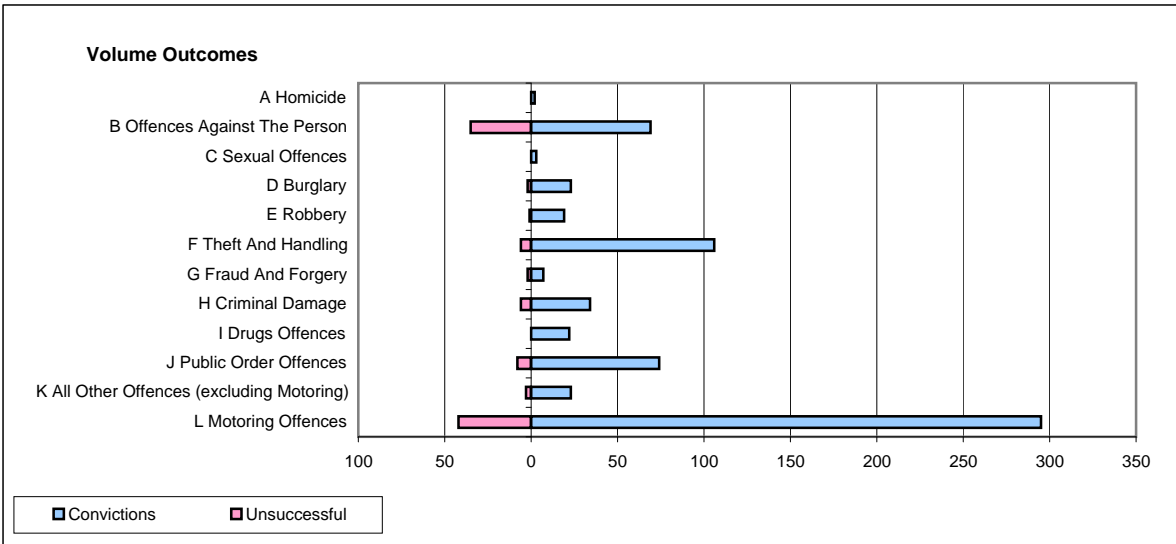
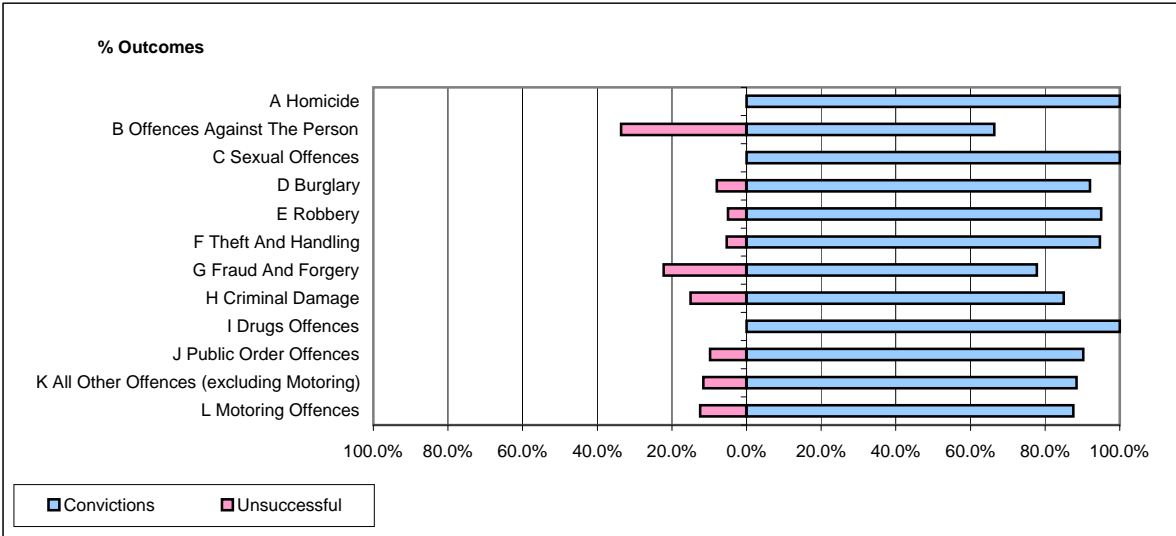


CPS OUTCOMES BY PRINCIPAL OFFENCE CATEGORY

March 2009

P02-Bedfordshire



	Convictions		Unsuccessful	
	Number of Defendants	%	Number of Defendants	%
A Homicide	2	100.0%	0	0.0%
B Offences Against The Person	69	66.3%	35	33.7%
C Sexual Offences	3	100.0%	0	0.0%
D Burglary	23	92.0%	2	8.0%
E Robbery	19	95.0%	1	5.0%
F Theft And Handling	106	94.6%	6	5.4%
G Fraud And Forgery	7	77.8%	2	22.2%
H Criminal Damage	34	85.0%	6	15.0%
I Drugs Offences	22	100.0%	0	0.0%
J Public Order Offences	74	90.2%	8	9.8%
K All Other Offences (excluding Motoring)	23	88.5%	3	11.5%
L Motoring Offences	295	87.5%	42	12.5%
Admin Finalisations	0	0.0%	12	100.0%
TOTAL	677	85.3%	117	14.7%