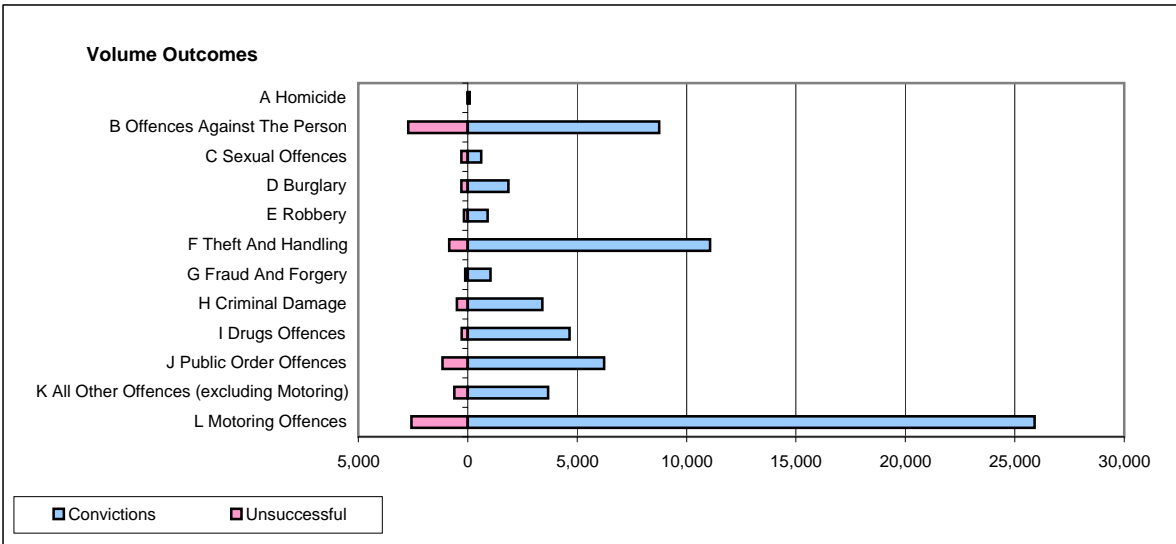
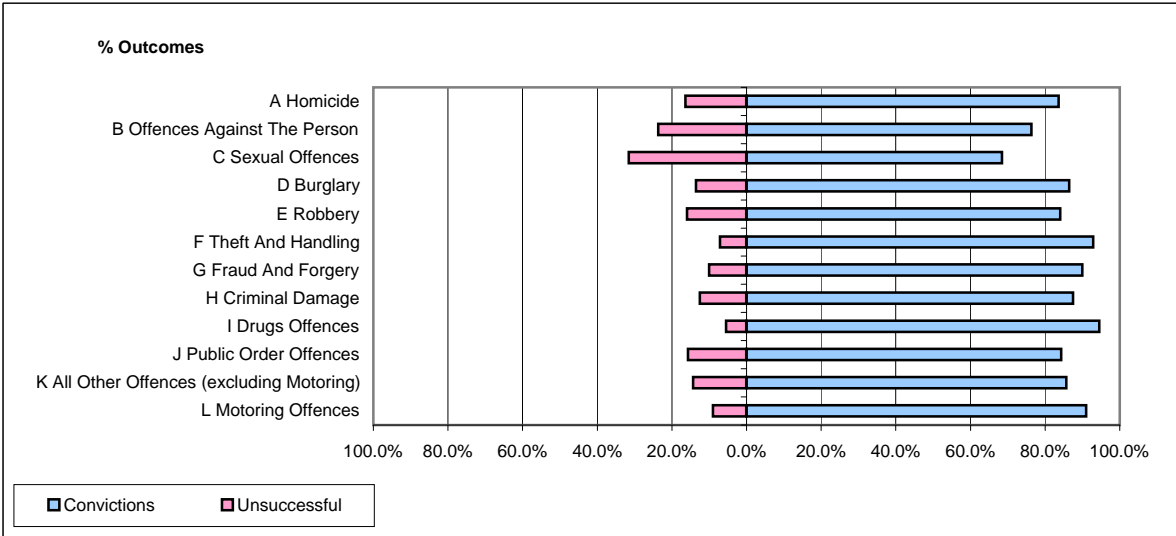


CPS OUTCOMES BY PRINCIPAL OFFENCE CATEGORY

February 2009

42 Areas



	Convictions		Unsuccessful	
	Number of Defendants	%	Number of Defendants	%
A Homicide	92	83.6%	18	16.4%
B Offences Against The Person	8,743	76.3%	2,717	23.7%
C Sexual Offences	618	68.4%	285	31.6%
D Burglary	1,857	86.5%	291	13.5%
E Robbery	911	84.0%	173	16.0%
F Theft And Handling	11,078	92.9%	846	7.1%
G Fraud And Forgery	1,044	90.0%	116	10.0%
H Criminal Damage	3,415	87.5%	489	12.5%
I Drugs Offences	4,655	94.5%	269	5.5%
J Public Order Offences	6,228	84.3%	1,159	15.7%
K All Other Offences (excluding Motoring)	3,679	85.7%	615	14.3%
L Motoring Offences	25,898	91.0%	2,566	9.0%
Admin Finalisations	0	0.0%	1,172	100.0%
TOTAL	68,218	86.4%	10,716	13.6%