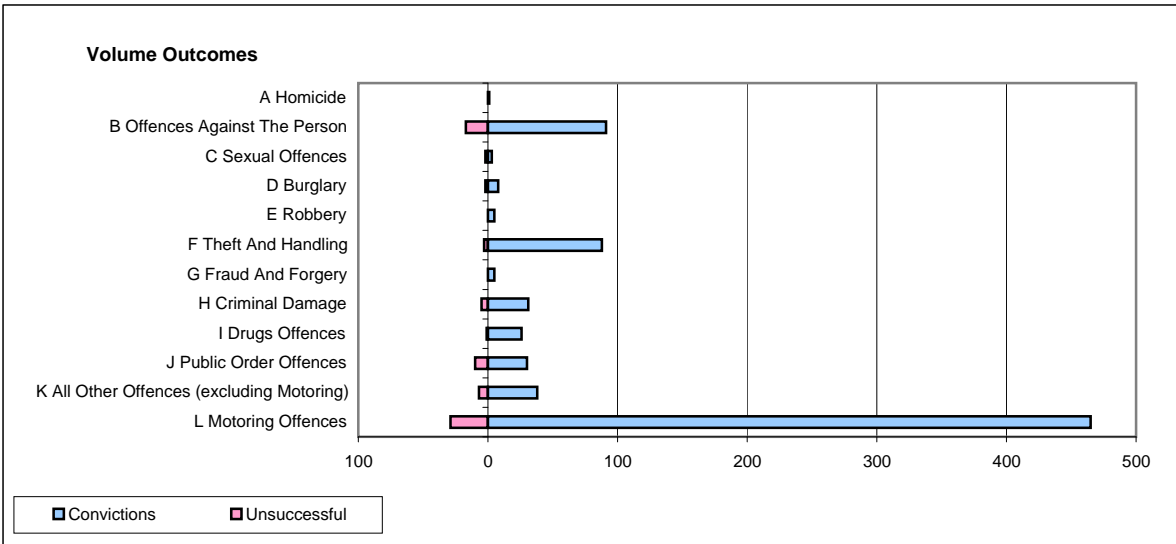
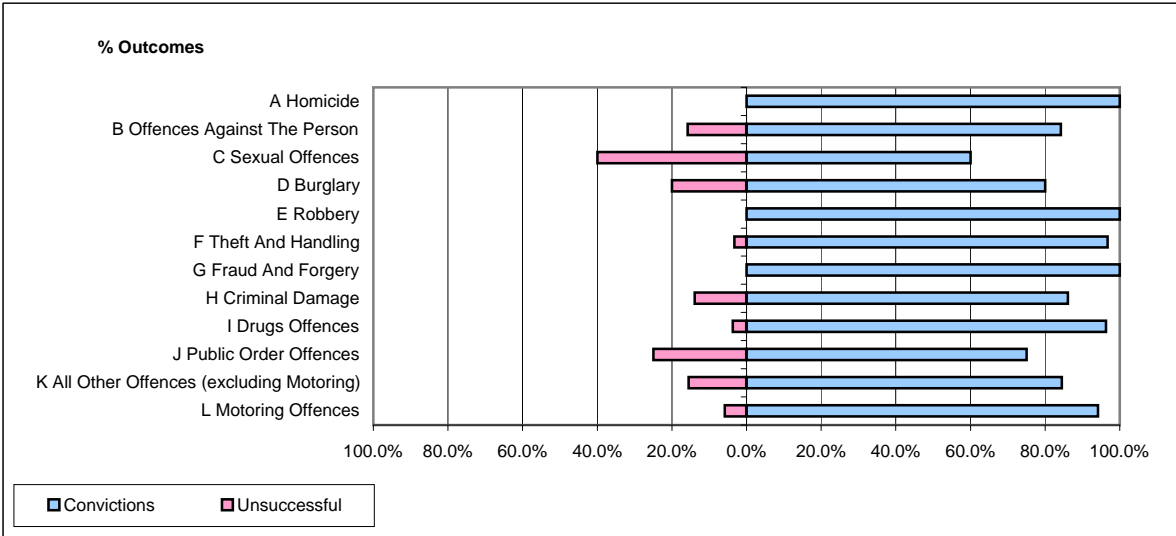


**CPS OUTCOMES BY PRINCIPAL OFFENCE CATEGORY**

**February 2009**

**P43-Wiltshire**



	Convictions		Unsuccessful	
	Number of Defendants	%	Number of Defendants	%
<b>A Homicide</b>	1	100.0%	0	0.0%
<b>B Offences Against The Person</b>	91	84.3%	17	15.7%
<b>C Sexual Offences</b>	3	60.0%	2	40.0%
<b>D Burglary</b>	8	80.0%	2	20.0%
<b>E Robbery</b>	5	100.0%	0	0.0%
<b>F Theft And Handling</b>	88	96.7%	3	3.3%
<b>G Fraud And Forgery</b>	5	100.0%	0	0.0%
<b>H Criminal Damage</b>	31	86.1%	5	13.9%
<b>I Drugs Offences</b>	26	96.3%	1	3.7%
<b>J Public Order Offences</b>	30	75.0%	10	25.0%
<b>K All Other Offences (excluding Motoring)</b>	38	84.4%	7	15.6%
<b>L Motoring Offences</b>	465	94.1%	29	5.9%
<b>Admin Finalisations</b>	0	0.0%	1	100.0%
<b>TOTAL</b>	<b>791</b>	<b>91.1%</b>	<b>77</b>	<b>8.9%</b>