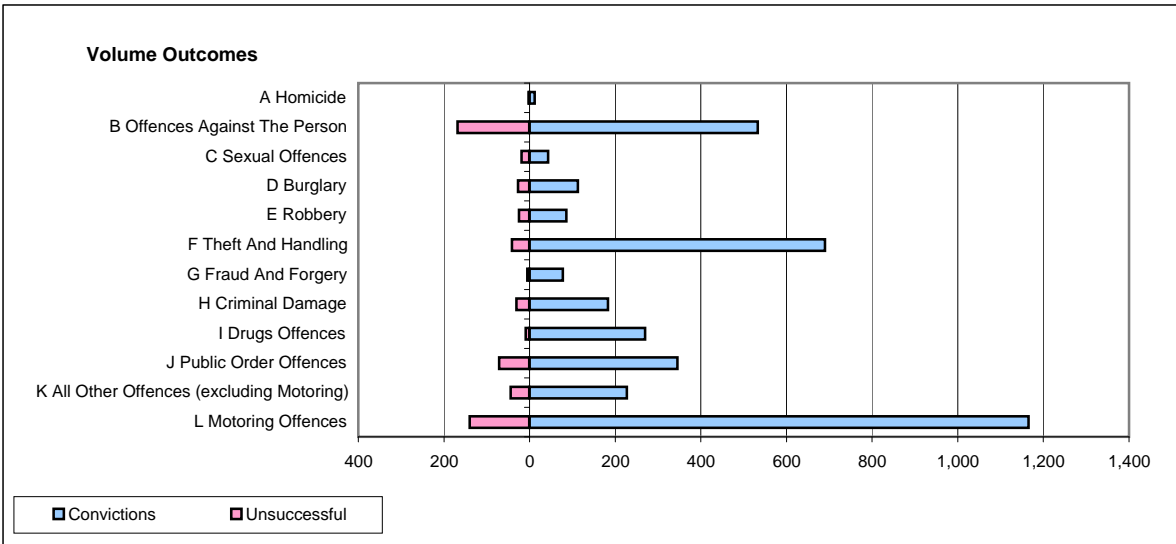
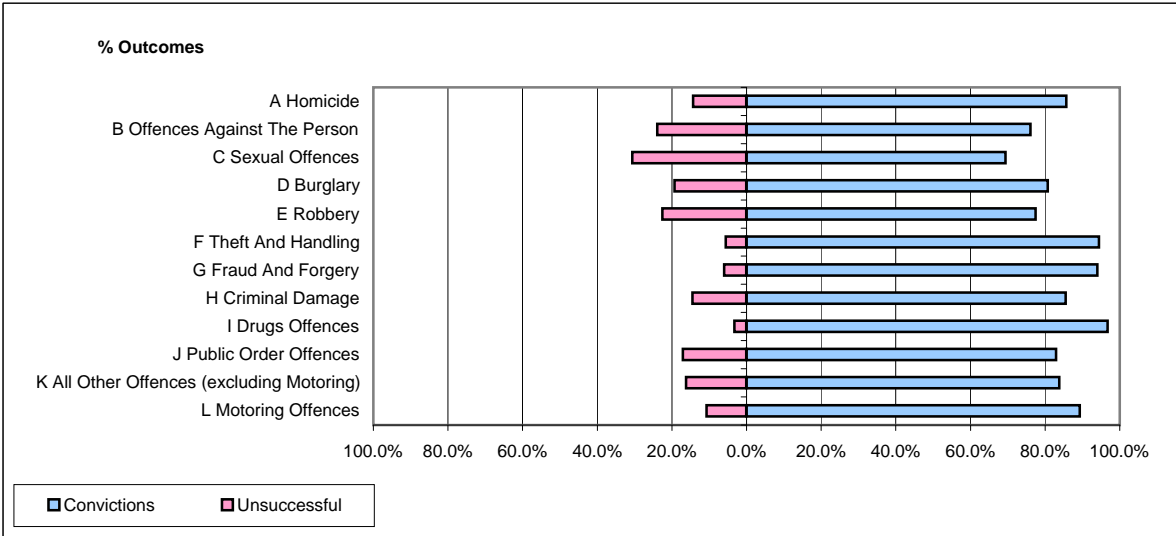


CPS OUTCOMES BY PRINCIPAL OFFENCE CATEGORY

February 2009

P41-WestMidlands



	Convictions		Unsuccessful	
	Number of Defendants	%	Number of Defendants	%
A Homicide	12	85.7%	2	14.3%
B Offences Against The Person	533	76.0%	168	24.0%
C Sexual Offences	43	69.4%	19	30.6%
D Burglary	113	80.7%	27	19.3%
E Robbery	86	77.5%	25	22.5%
F Theft And Handling	690	94.4%	41	5.6%
G Fraud And Forgery	78	94.0%	5	6.0%
H Criminal Damage	183	85.5%	31	14.5%
I Drugs Offences	270	96.8%	9	3.2%
J Public Order Offences	345	82.9%	71	17.1%
K All Other Offences (excluding Motoring)	227	83.8%	44	16.2%
L Motoring Offences	1,165	89.3%	140	10.7%
Admin Finalisations	0	0.0%	47	100.0%
TOTAL	3,745	85.6%	629	14.4%