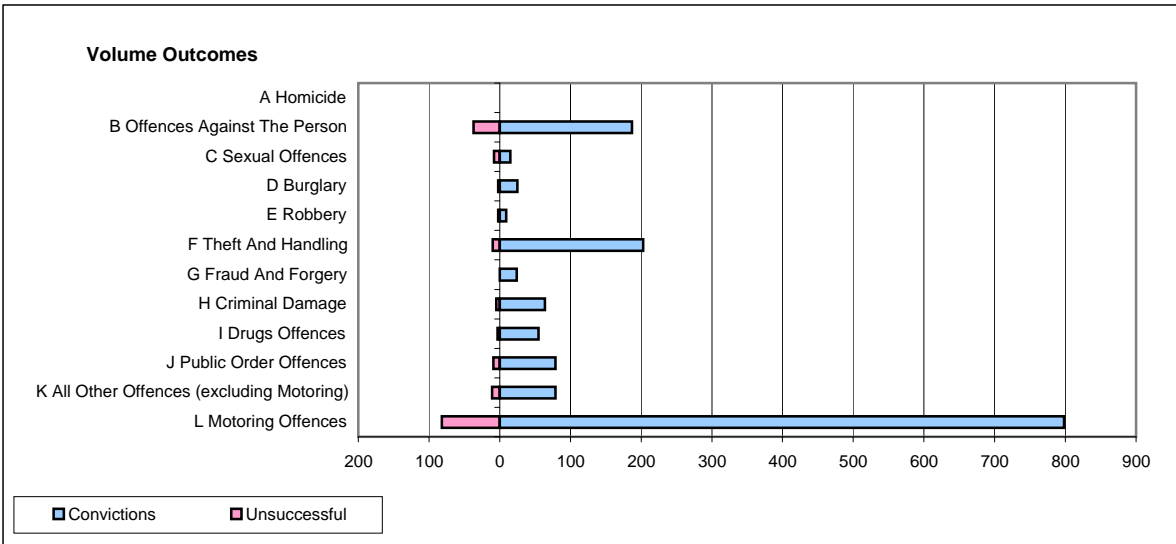
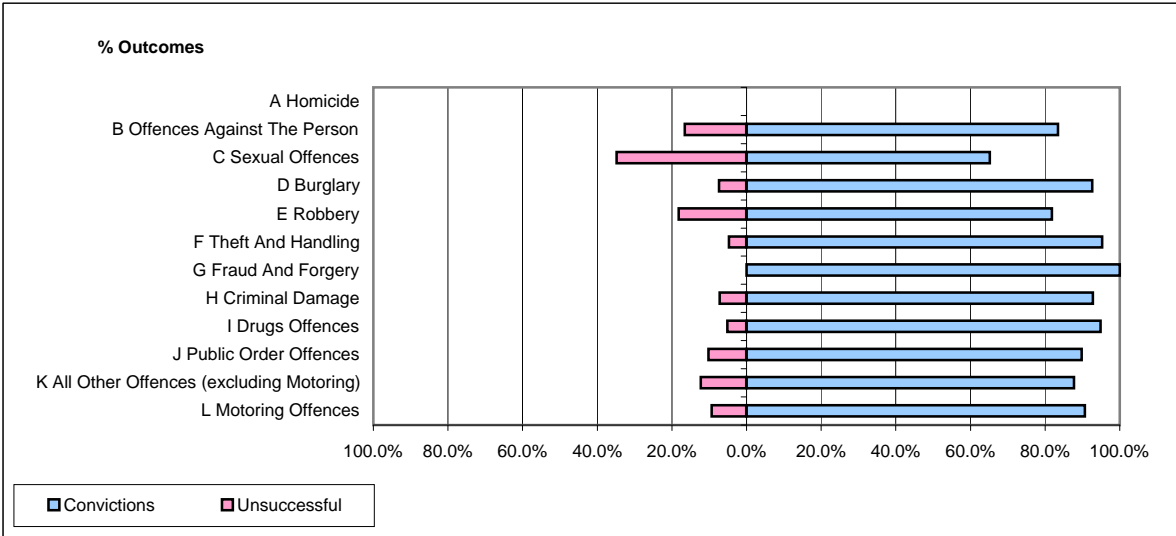


**CPS OUTCOMES BY PRINCIPAL OFFENCE CATEGORY**

**February 2009**

**P40-WestMercia**



	Convictions		Unsuccessful	
	Number of Defendants	%	Number of Defendants	%
<b>A Homicide</b>	<b>0</b>	<b>0</b>	<b>0</b>	<b>0</b>
<b>B Offences Against The Person</b>	<b>187</b>	<b>83.5%</b>	<b>37</b>	<b>16.5%</b>
<b>C Sexual Offences</b>	<b>15</b>	<b>65.2%</b>	<b>8</b>	<b>34.8%</b>
<b>D Burglary</b>	<b>25</b>	<b>92.6%</b>	<b>2</b>	<b>7.4%</b>
<b>E Robbery</b>	<b>9</b>	<b>81.8%</b>	<b>2</b>	<b>18.2%</b>
<b>F Theft And Handling</b>	<b>203</b>	<b>95.3%</b>	<b>10</b>	<b>4.7%</b>
<b>G Fraud And Forgery</b>	<b>24</b>	<b>100.0%</b>	<b>0</b>	<b>0.0%</b>
<b>H Criminal Damage</b>	<b>64</b>	<b>92.8%</b>	<b>5</b>	<b>7.2%</b>
<b>I Drugs Offences</b>	<b>55</b>	<b>94.8%</b>	<b>3</b>	<b>5.2%</b>
<b>J Public Order Offences</b>	<b>79</b>	<b>89.8%</b>	<b>9</b>	<b>10.2%</b>
<b>K All Other Offences (excluding Motoring)</b>	<b>79</b>	<b>87.8%</b>	<b>11</b>	<b>12.2%</b>
<b>L Motoring Offences</b>	<b>798</b>	<b>90.7%</b>	<b>82</b>	<b>9.3%</b>
<b>Admin Finalisations</b>	<b>0</b>	<b>0.0%</b>	<b>12</b>	<b>100.0%</b>
<b>TOTAL</b>	<b>1,538</b>	<b>89.5%</b>	<b>181</b>	<b>10.5%</b>