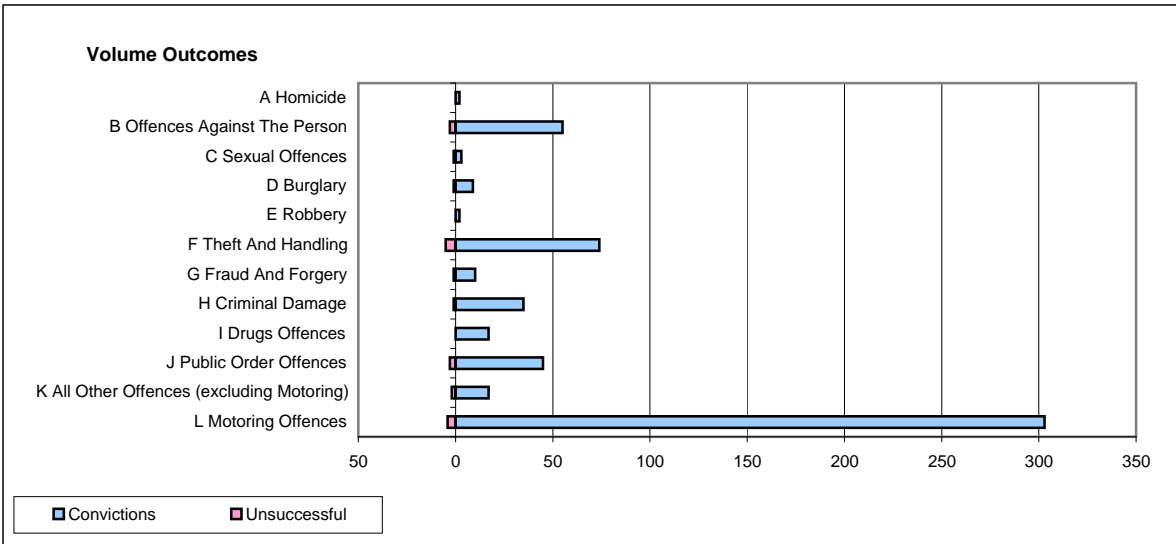
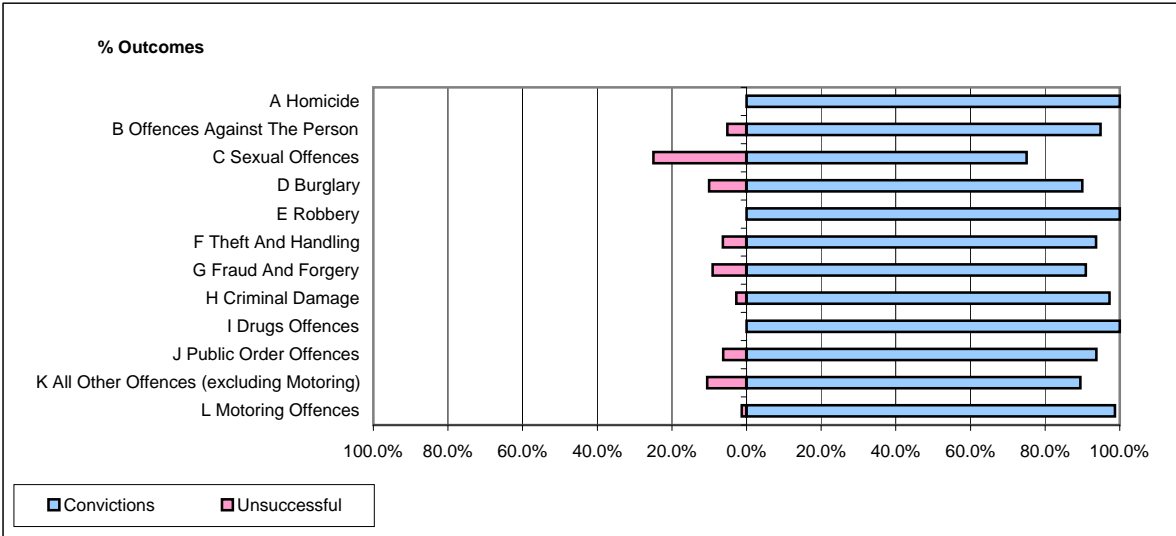


CPS OUTCOMES BY PRINCIPAL OFFENCE CATEGORY

February 2009

P39-Warwickshire



	Convictions		Unsuccessful	
	Number of Defendants	%	Number of Defendants	%
A Homicide	2	100.0%	0	0.0%
B Offences Against The Person	55	94.8%	3	5.2%
C Sexual Offences	3	75.0%	1	25.0%
D Burglary	9	90.0%	1	10.0%
E Robbery	2	100.0%	0	0.0%
F Theft And Handling	74	93.7%	5	6.3%
G Fraud And Forgery	10	90.9%	1	9.1%
H Criminal Damage	35	97.2%	1	2.8%
I Drugs Offences	17	100.0%	0	0.0%
J Public Order Offences	45	93.8%	3	6.3%
K All Other Offences (excluding Motoring)	17	89.5%	2	10.5%
L Motoring Offences	303	98.7%	4	1.3%
Admin Finalisations	0	0.0%	4	100.0%
TOTAL	572	95.8%	25	4.2%