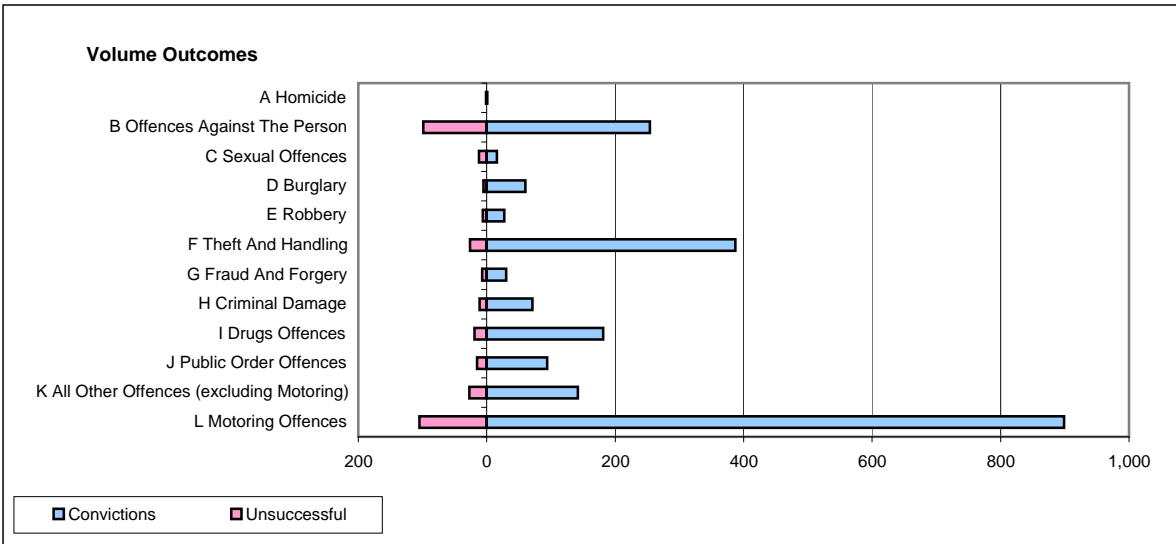
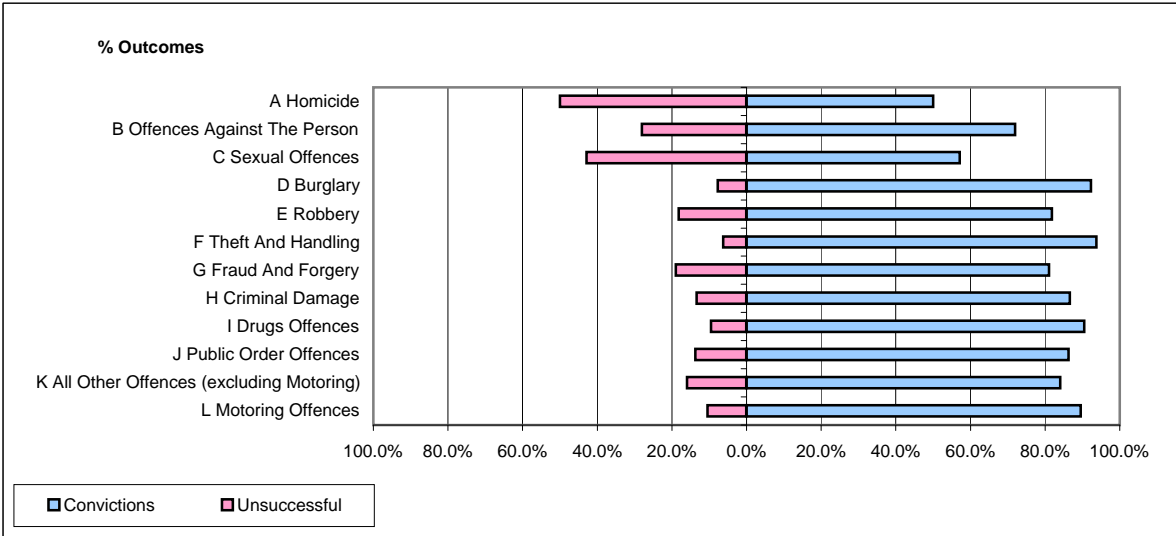


**CPS OUTCOMES BY PRINCIPAL OFFENCE CATEGORY**

**February 2009**

**P38-ThamesValley**



	Convictions		Unsuccessful	
	Number of Defendants	%	Number of Defendants	%
<b>A Homicide</b>	1	50.0%	1	50.0%
<b>B Offences Against The Person</b>	254	72.0%	99	28.0%
<b>C Sexual Offences</b>	16	57.1%	12	42.9%
<b>D Burglary</b>	60	92.3%	5	7.7%
<b>E Robbery</b>	27	81.8%	6	18.2%
<b>F Theft And Handling</b>	387	93.7%	26	6.3%
<b>G Fraud And Forgery</b>	30	81.1%	7	18.9%
<b>H Criminal Damage</b>	71	86.6%	11	13.4%
<b>I Drugs Offences</b>	181	90.5%	19	9.5%
<b>J Public Order Offences</b>	94	86.2%	15	13.8%
<b>K All Other Offences (excluding Motoring)</b>	142	84.0%	27	16.0%
<b>L Motoring Offences</b>	899	89.5%	105	10.5%
<b>Admin Finalisations</b>	0	0.0%	59	100.0%
<b>TOTAL</b>	2,162	84.7%	392	15.3%