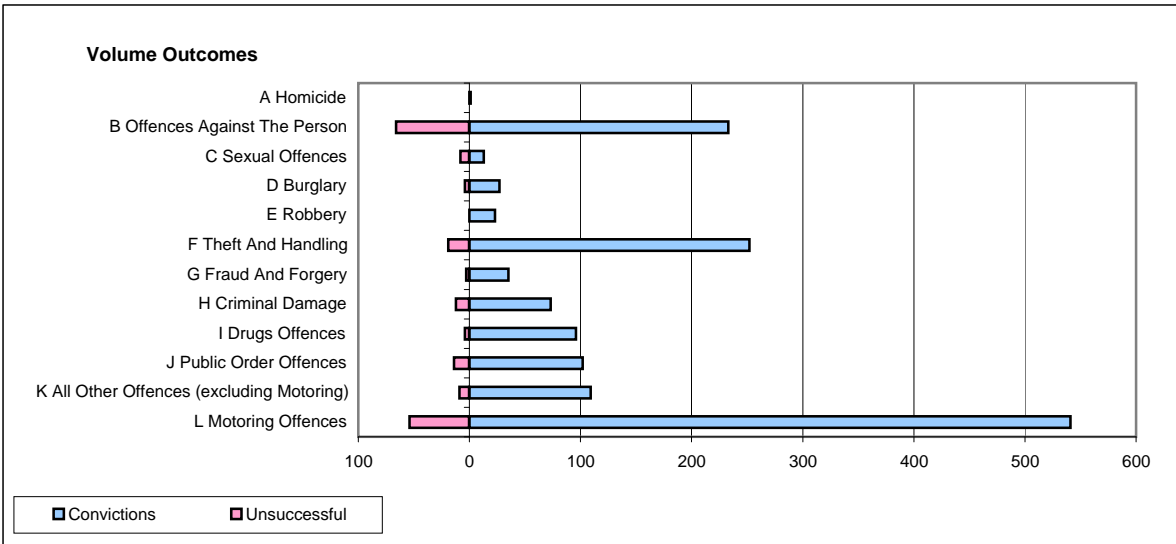
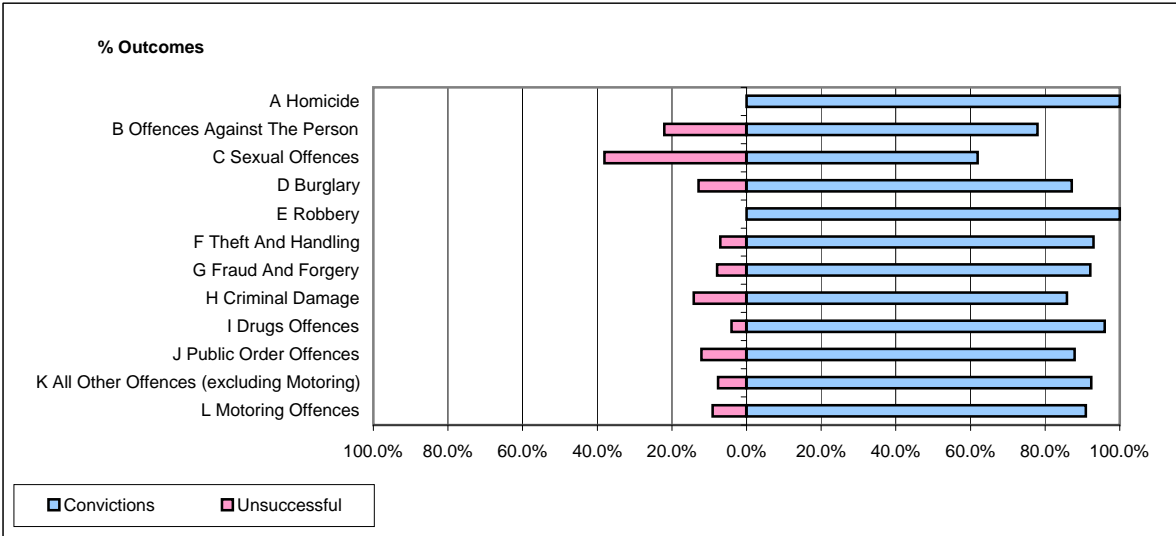


CPS OUTCOMES BY PRINCIPAL OFFENCE CATEGORY

February 2009

P37-Sussex



	Convictions		Unsuccessful	
	Number of Defendants	%	Number of Defendants	%
A Homicide	1	100.0%	0	0.0%
B Offences Against The Person	233	77.9%	66	22.1%
C Sexual Offences	13	61.9%	8	38.1%
D Burglary	27	87.1%	4	12.9%
E Robbery	23	100.0%	0	0.0%
F Theft And Handling	252	93.0%	19	7.0%
G Fraud And Forgery	35	92.1%	3	7.9%
H Criminal Damage	73	85.9%	12	14.1%
I Drugs Offences	96	96.0%	4	4.0%
J Public Order Offences	102	87.9%	14	12.1%
K All Other Offences (excluding Motoring)	109	92.4%	9	7.6%
L Motoring Offences	541	90.9%	54	9.1%
Admin Finalisations	0	0.0%	23	100.0%
TOTAL	1,505	87.4%	216	12.6%