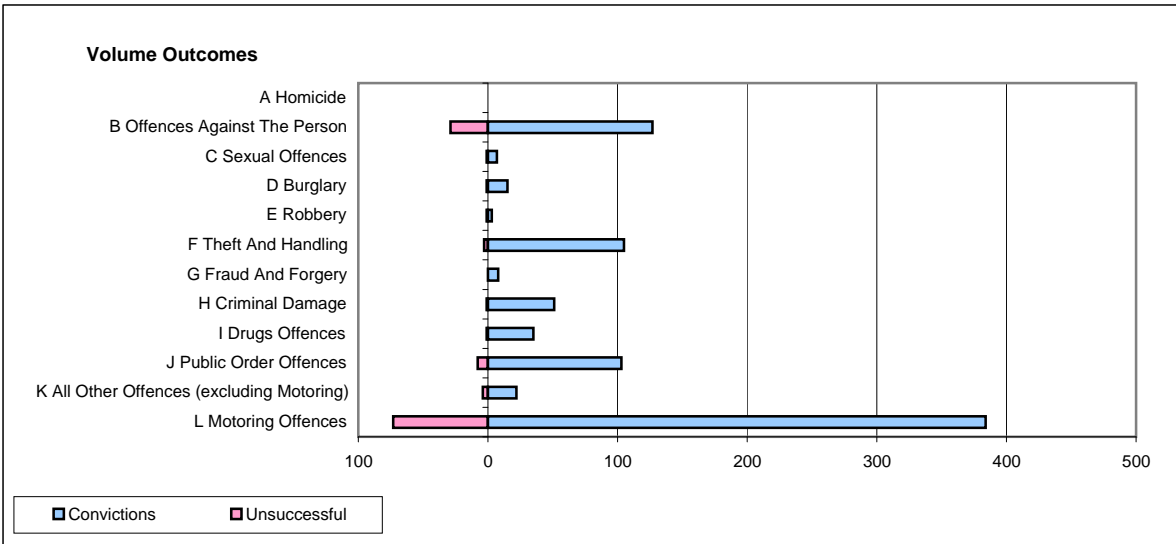
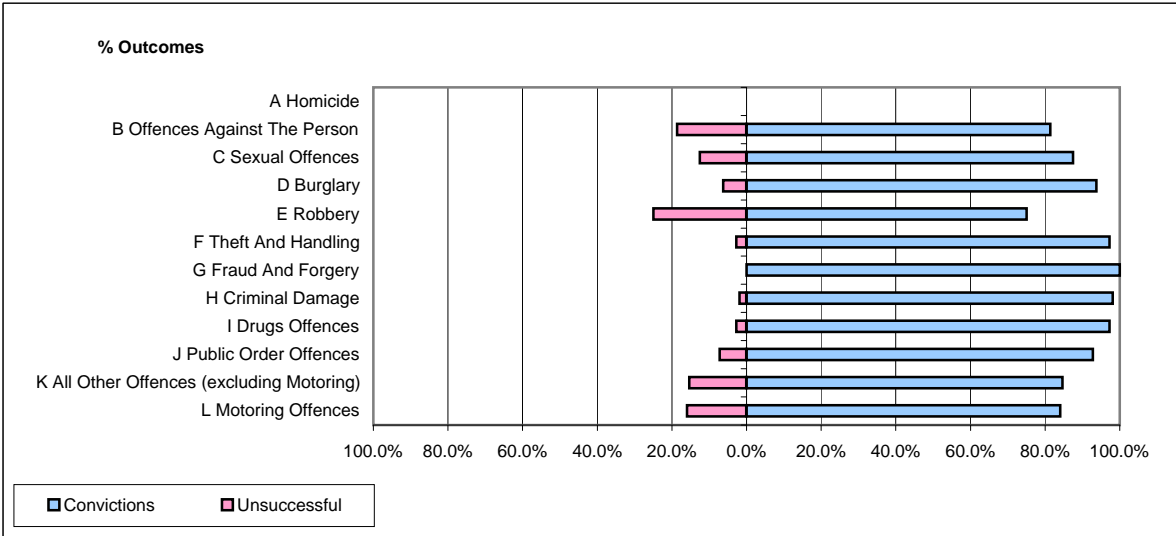


CPS OUTCOMES BY PRINCIPAL OFFENCE CATEGORY

February 2009

P35-Suffolk



	Convictions		Unsuccessful	
	Number of Defendants	%	Number of Defendants	%
A Homicide	0	0	0	0
B Offences Against The Person	127	81.4%	29	18.6%
C Sexual Offences	7	87.5%	1	12.5%
D Burglary	15	93.8%	1	6.3%
E Robbery	3	75.0%	1	25.0%
F Theft And Handling	105	97.2%	3	2.8%
G Fraud And Forgery	8	100.0%	0	0.0%
H Criminal Damage	51	98.1%	1	1.9%
I Drugs Offences	35	97.2%	1	2.8%
J Public Order Offences	103	92.8%	8	7.2%
K All Other Offences (excluding Motoring)	22	84.6%	4	15.4%
L Motoring Offences	384	84.0%	73	16.0%
Admin Finalisations	0	0.0%	20	100.0%
TOTAL	860	85.8%	142	14.2%