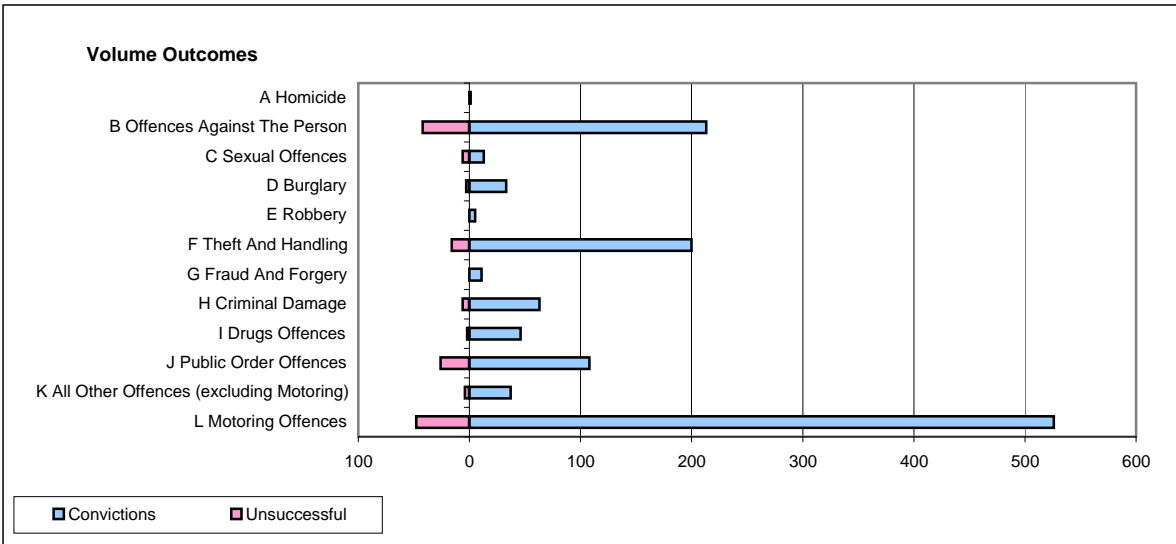
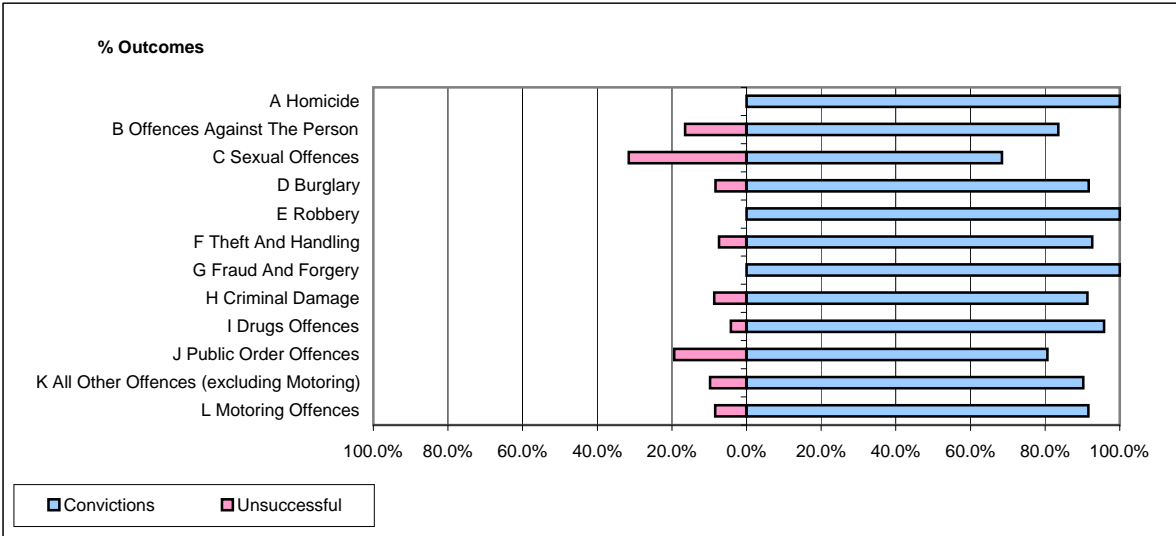


CPS OUTCOMES BY PRINCIPAL OFFENCE CATEGORY

February 2009

P34-Staffordshire



	Convictions		Unsuccessful	
	Number of Defendants	%	Number of Defendants	%
A Homicide	1	100.0%	0	0.0%
B Offences Against The Person	213	83.5%	42	16.5%
C Sexual Offences	13	68.4%	6	31.6%
D Burglary	33	91.7%	3	8.3%
E Robbery	5	100.0%	0	0.0%
F Theft And Handling	200	92.6%	16	7.4%
G Fraud And Forgery	11	100.0%	0	0.0%
H Criminal Damage	63	91.3%	6	8.7%
I Drugs Offences	46	95.8%	2	4.2%
J Public Order Offences	108	80.6%	26	19.4%
K All Other Offences (excluding Motoring)	37	90.2%	4	9.8%
L Motoring Offences	526	91.6%	48	8.4%
Admin Finalisations	0	0.0%	7	100.0%
TOTAL	1,256	88.7%	160	11.3%