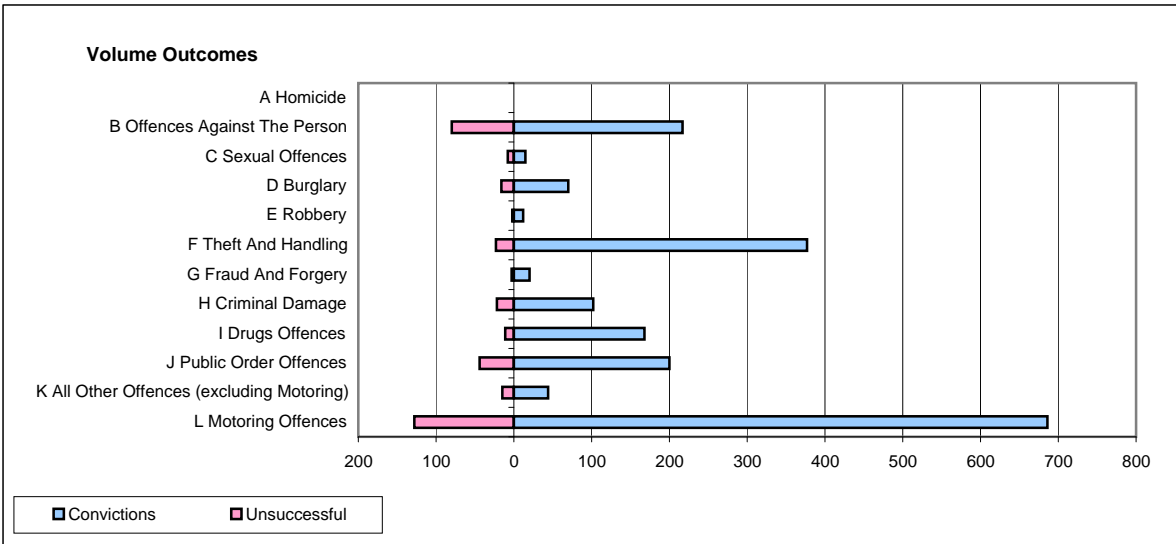
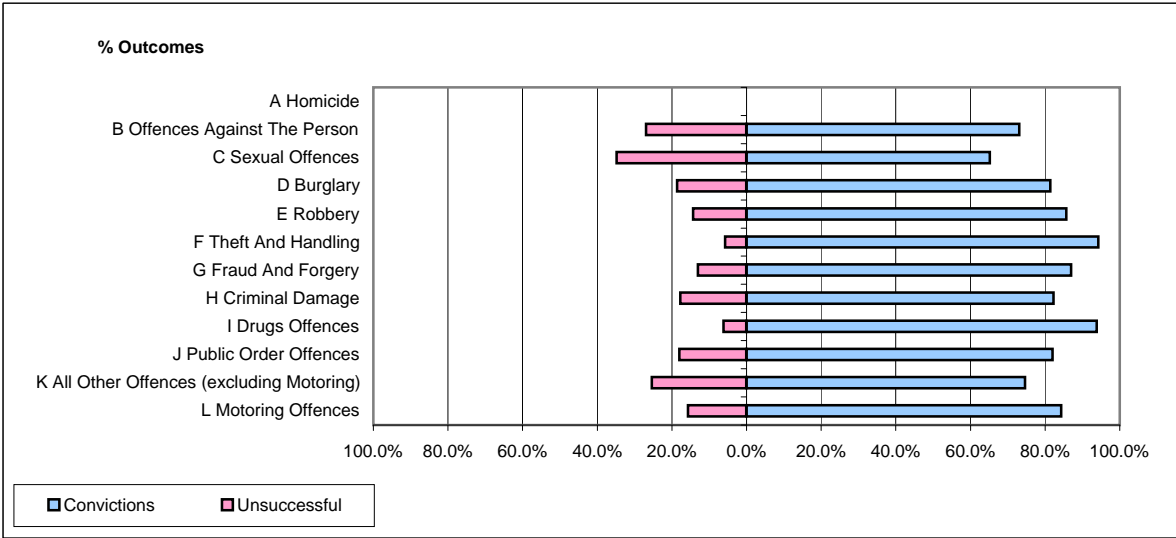


**CPS OUTCOMES BY PRINCIPAL OFFENCE CATEGORY**

**February 2009**

**P32-SouthWales**



	Convictions		Unsuccessful	
	Number of Defendants	%	Number of Defendants	%
<b>A Homicide</b>	<b>0</b>	<b>0</b>	<b>0</b>	<b>0</b>
<b>B Offences Against The Person</b>	<b>217</b>	<b>73.1%</b>	<b>80</b>	<b>26.9%</b>
<b>C Sexual Offences</b>	<b>15</b>	<b>65.2%</b>	<b>8</b>	<b>34.8%</b>
<b>D Burglary</b>	<b>70</b>	<b>81.4%</b>	<b>16</b>	<b>18.6%</b>
<b>E Robbery</b>	<b>12</b>	<b>85.7%</b>	<b>2</b>	<b>14.3%</b>
<b>F Theft And Handling</b>	<b>377</b>	<b>94.3%</b>	<b>23</b>	<b>5.8%</b>
<b>G Fraud And Forgery</b>	<b>20</b>	<b>87.0%</b>	<b>3</b>	<b>13.0%</b>
<b>H Criminal Damage</b>	<b>102</b>	<b>82.3%</b>	<b>22</b>	<b>17.7%</b>
<b>I Drugs Offences</b>	<b>168</b>	<b>93.9%</b>	<b>11</b>	<b>6.1%</b>
<b>J Public Order Offences</b>	<b>200</b>	<b>82.0%</b>	<b>44</b>	<b>18.0%</b>
<b>K All Other Offences (excluding Motoring)</b>	<b>44</b>	<b>74.6%</b>	<b>15</b>	<b>25.4%</b>
<b>L Motoring Offences</b>	<b>686</b>	<b>84.3%</b>	<b>128</b>	<b>15.7%</b>
<b>Admin Finalisations</b>	<b>0</b>	<b>0.0%</b>	<b>66</b>	<b>100.0%</b>
<b>TOTAL</b>	<b>1,911</b>	<b>82.1%</b>	<b>418</b>	<b>17.9%</b>