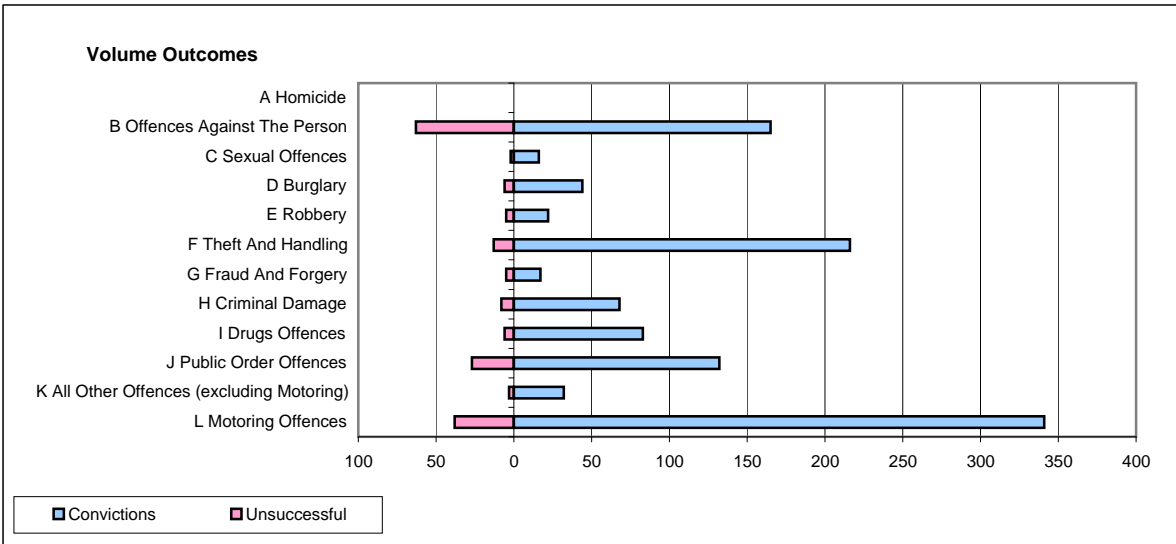
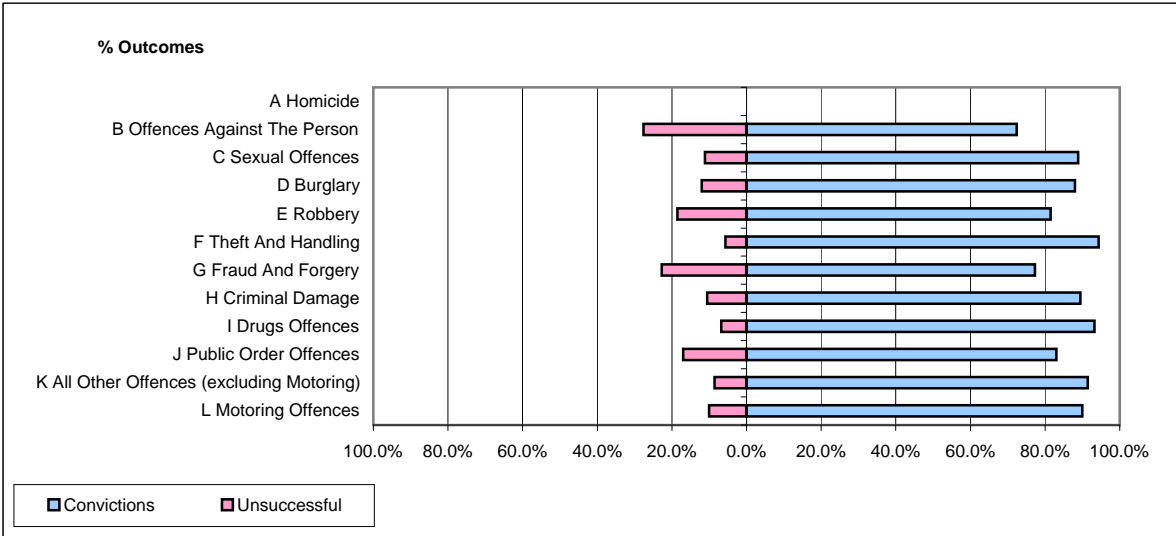


**CPS OUTCOMES BY PRINCIPAL OFFENCE CATEGORY**

**February 2009**

**P31-Nottinghamshire**



	Convictions		Unsuccessful	
	Number of Defendants	%	Number of Defendants	%
<b>A Homicide</b>	<b>0</b>	<b>0</b>	<b>0</b>	<b>0</b>
<b>B Offences Against The Person</b>	<b>165</b>	<b>72.4%</b>	<b>63</b>	<b>27.6%</b>
<b>C Sexual Offences</b>	<b>16</b>	<b>88.9%</b>	<b>2</b>	<b>11.1%</b>
<b>D Burglary</b>	<b>44</b>	<b>88.0%</b>	<b>6</b>	<b>12.0%</b>
<b>E Robbery</b>	<b>22</b>	<b>81.5%</b>	<b>5</b>	<b>18.5%</b>
<b>F Theft And Handling</b>	<b>216</b>	<b>94.3%</b>	<b>13</b>	<b>5.7%</b>
<b>G Fraud And Forgery</b>	<b>17</b>	<b>77.3%</b>	<b>5</b>	<b>22.7%</b>
<b>H Criminal Damage</b>	<b>68</b>	<b>89.5%</b>	<b>8</b>	<b>10.5%</b>
<b>I Drugs Offences</b>	<b>83</b>	<b>93.3%</b>	<b>6</b>	<b>6.7%</b>
<b>J Public Order Offences</b>	<b>132</b>	<b>83.0%</b>	<b>27</b>	<b>17.0%</b>
<b>K All Other Offences (excluding Motoring)</b>	<b>32</b>	<b>91.4%</b>	<b>3</b>	<b>8.6%</b>
<b>L Motoring Offences</b>	<b>341</b>	<b>90.0%</b>	<b>38</b>	<b>10.0%</b>
<b>Admin Finalisations</b>	<b>0</b>	<b>0.0%</b>	<b>5</b>	<b>100.0%</b>
<b>TOTAL</b>	<b>1,136</b>	<b>86.3%</b>	<b>181</b>	<b>13.7%</b>