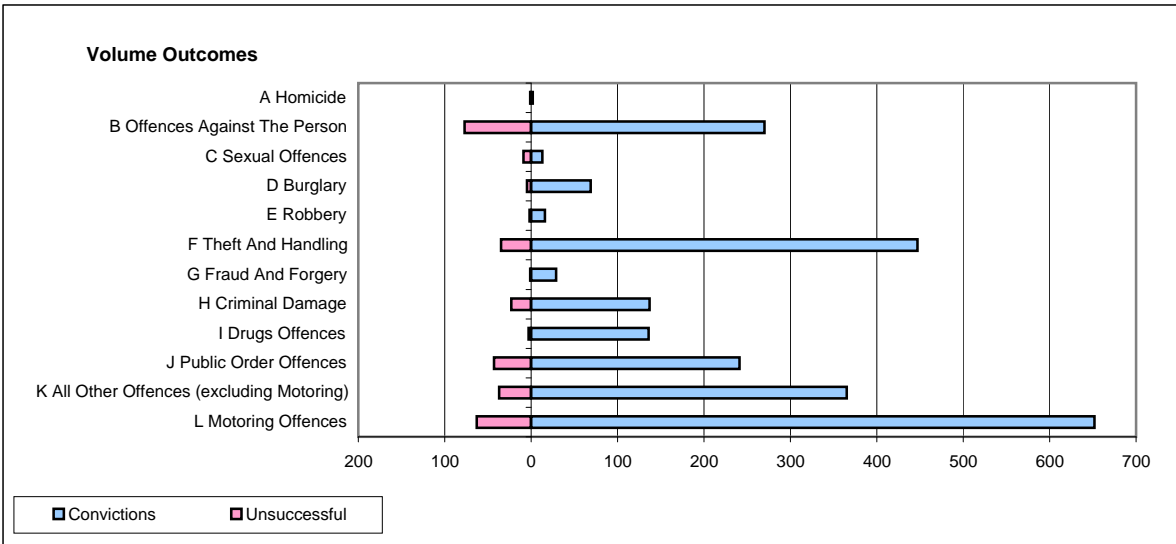
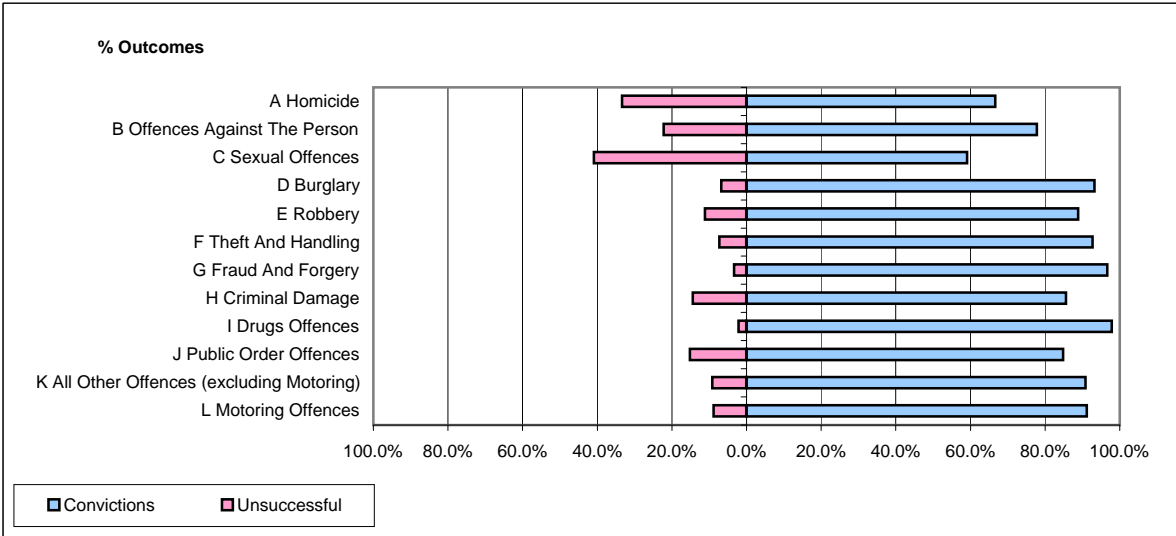


**CPS OUTCOMES BY PRINCIPAL OFFENCE CATEGORY**

**February 2009**

**P28-Northumbria**



	Convictions		Unsuccessful	
	Number of Defendants	%	Number of Defendants	%
<b>A Homicide</b>	<b>2</b>	<b>66.7%</b>	<b>1</b>	<b>33.3%</b>
<b>B Offences Against The Person</b>	<b>270</b>	<b>77.8%</b>	<b>77</b>	<b>22.2%</b>
<b>C Sexual Offences</b>	<b>13</b>	<b>59.1%</b>	<b>9</b>	<b>40.9%</b>
<b>D Burglary</b>	<b>69</b>	<b>93.2%</b>	<b>5</b>	<b>6.8%</b>
<b>E Robbery</b>	<b>16</b>	<b>88.9%</b>	<b>2</b>	<b>11.1%</b>
<b>F Theft And Handling</b>	<b>447</b>	<b>92.7%</b>	<b>35</b>	<b>7.3%</b>
<b>G Fraud And Forgery</b>	<b>29</b>	<b>96.7%</b>	<b>1</b>	<b>3.3%</b>
<b>H Criminal Damage</b>	<b>137</b>	<b>85.6%</b>	<b>23</b>	<b>14.4%</b>
<b>I Drugs Offences</b>	<b>136</b>	<b>97.8%</b>	<b>3</b>	<b>2.2%</b>
<b>J Public Order Offences</b>	<b>241</b>	<b>84.9%</b>	<b>43</b>	<b>15.1%</b>
<b>K All Other Offences (excluding Motoring)</b>	<b>365</b>	<b>90.8%</b>	<b>37</b>	<b>9.2%</b>
<b>L Motoring Offences</b>	<b>652</b>	<b>91.2%</b>	<b>63</b>	<b>8.8%</b>
<b>Admin Finalisations</b>	<b>0</b>	<b>0.0%</b>	<b>21</b>	<b>100.0%</b>
<b>TOTAL</b>	<b>2,377</b>	<b>88.1%</b>	<b>320</b>	<b>11.9%</b>